



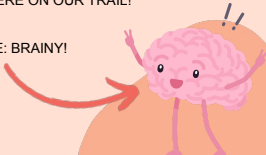
This activity is made possible through a partnership between ASU-Mountain Home's Teacher Education program and Friends of the North Fork & White Rivers.



HELLO!

LET'S LEARN ABOUT THE CAUSES AND EFFECTS
OF POLLUTION HERE ON OUR TRAIL!

WITH ME: BRAINY!



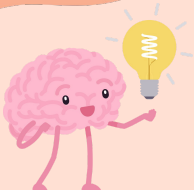
Unfortunately, here on our very own trail...we can see so much pollution!

Pollution means that there is something that is hurting the environment around it that is not supposed to be there!

Pollution can come from so many things that you and I wouldn't even think about!

We will talk more about that!

Let's Learn!!!



So...what can cause pollution?

Pollution can be caused by cars, people, animals, factories, and much more!

On the very trail you are walking on, you will see these types of pollution:

- littering
- water pollution
- air pollution

Of course, there are many more kinds BUT we are not going to cover that today.

Let's Learn!!!



Littering

Littering is when someone drops trash onto the ground, and does not pick it up!

Littering mostly comes from people, and because it's so harmful it is actually against the law.

Let's look at some littering examples on our trail.





It is a form of pollution because if a animal were to eat this, thinking it was food, they could get really sick and hurt.

This...this is litter! On our very own trail.





and this!



and this!



and this!

It's sad these animals have to live with trash everywhere. Would you want to live like that?

**So let's keep the trash in trash cans
and off the ground!!!**



Before we move on...let's play "Spot the litter!"



In this photo...where do you see the litter? Take your time and search for it!



GOOD JOB!!!



It is right there in the circles! Did you see it?



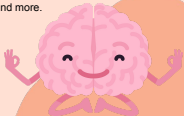
Water Pollution



Water pollution is similar to littering. It is something that is in water that is not supposed to be there!

Water pollution can be caused by trash, dangerous liquids, and more.

This is water pollution that is seen in Dodd Creek.

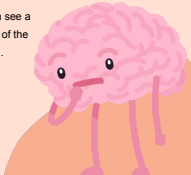


Water pollution hurts the animals that live in the water and can make them very sick! It also makes the water difficult to live in.

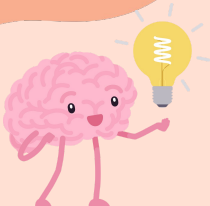
If you were a fish, would you want trash in your home?

In this photo, you can see a gross film on the top of the water and trash.

Do you see it?



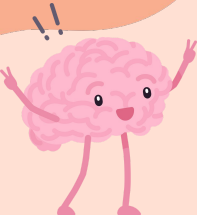
Because our trail is so close to a busy highway, it allows pollution to happen more often.





Can you find the water
pollution in this picture??





Right! There was a sign
that must have blown in
the water!



Air Pollution

The last form of pollution we will talk about is air pollution.

Air pollution on our trail mostly comes from the nearby factories and highways.

When cars drive by all day and night, they can produce toxic fumes that harm the trees and the air we breathe in.



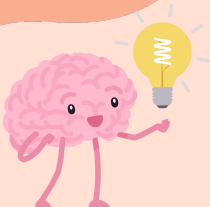


Even from the factories. They release toxic fumes in the air that harms everything around it.

Obviously, we need cars and factories to live our everyday life.



Now you know about kinds of pollution we see on our trail and how it affects us.

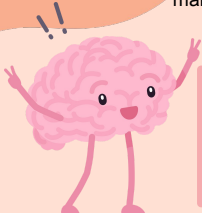


Remember: Pollution hurts our friend: Planet Earth! So if you can do something about...do it!



Thank you for keeping me clean!

Remember to take our mini quiz to
make sure you know everything about
pollution!



Scan me to take
the quiz!!!



Or copy this link! : <https://take.quiz-maker.com/QBUAKMDXXY>