

GameChanger™ TRAPS

Most Versatile Trap on the Market

Game Changer Instruction Manual

JR 2x8

Pro 4x8



Ahead of the Game

Contact Us:

(501) 746-0711

sales@bullcreekoutdoors.com

www.gamechangertraps.com



Bull Creek
• WELDING & FAB •

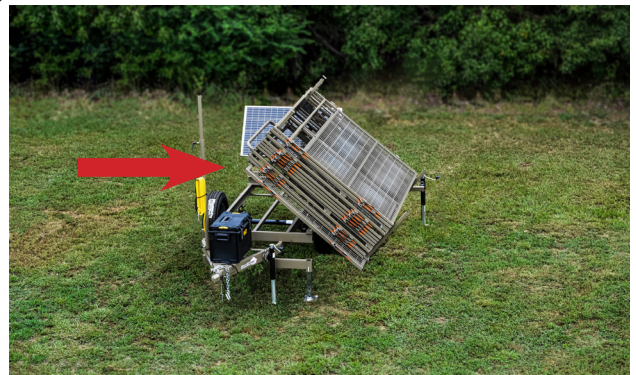
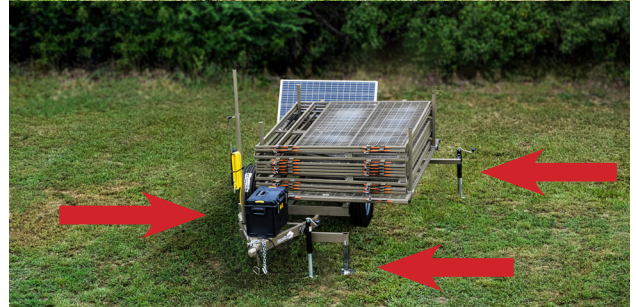
Table of Contents

1	Lifting Panels from Trailer.....	1
2	Setting Panels and Gates.....	2
3	Wiring.....	3
4	Electronics.....	4
5	Testing Latch.....	4
6	JR & Pro Cable Configuration.....	5
7	Trapping and Moving Trap.....	6
8	Required Trap Maintenance.....	6
9	Accessories.....	6



1 Lifting Panels from Trailer

- Unhook trailer from vehicle/UTV and remove straps from trap.
- Extend front jack all the way out.
- Unpin and slide the front and rear jack out, rotate, and Extend jack all the way to ground.
- On the driver's side of trailer, locate the **Helper Jack**. Extend the foot all the way out.
- Locate, pull back, and lock in place spring pins on front and rear holding hinge panel in place.
- Push hinge panel with gates and panels across trailer frame until it hits the stops.
- Pick up on the hinge panel with hand rail until it rests on helper jack.
- Use helper jack to lower panels down until they are vertical and rest on the ground.
- Raise front and rear jacks and slide rear jack back to trailer frame.



2 Setting Panels and Gates

- Take off first panel and use pins to secure top and bottom of panel to the hinge panel on rear of trailer. Start the first panel on the side closest to the solar panel. Depending on terrain you might leave the top pin out until trap is completely together and then place top pin.
- Always place welded wire mesh portion of the panel to the inside of the trap.
- Remove each consecutive Panel and Gate and pin shaping trap into a circle formation until the last panel is pinned to other side of hinge panel.



JR 2x8 Front

Pro 4x8 Front



JR 2x8 Across

Pro 4x8 Across



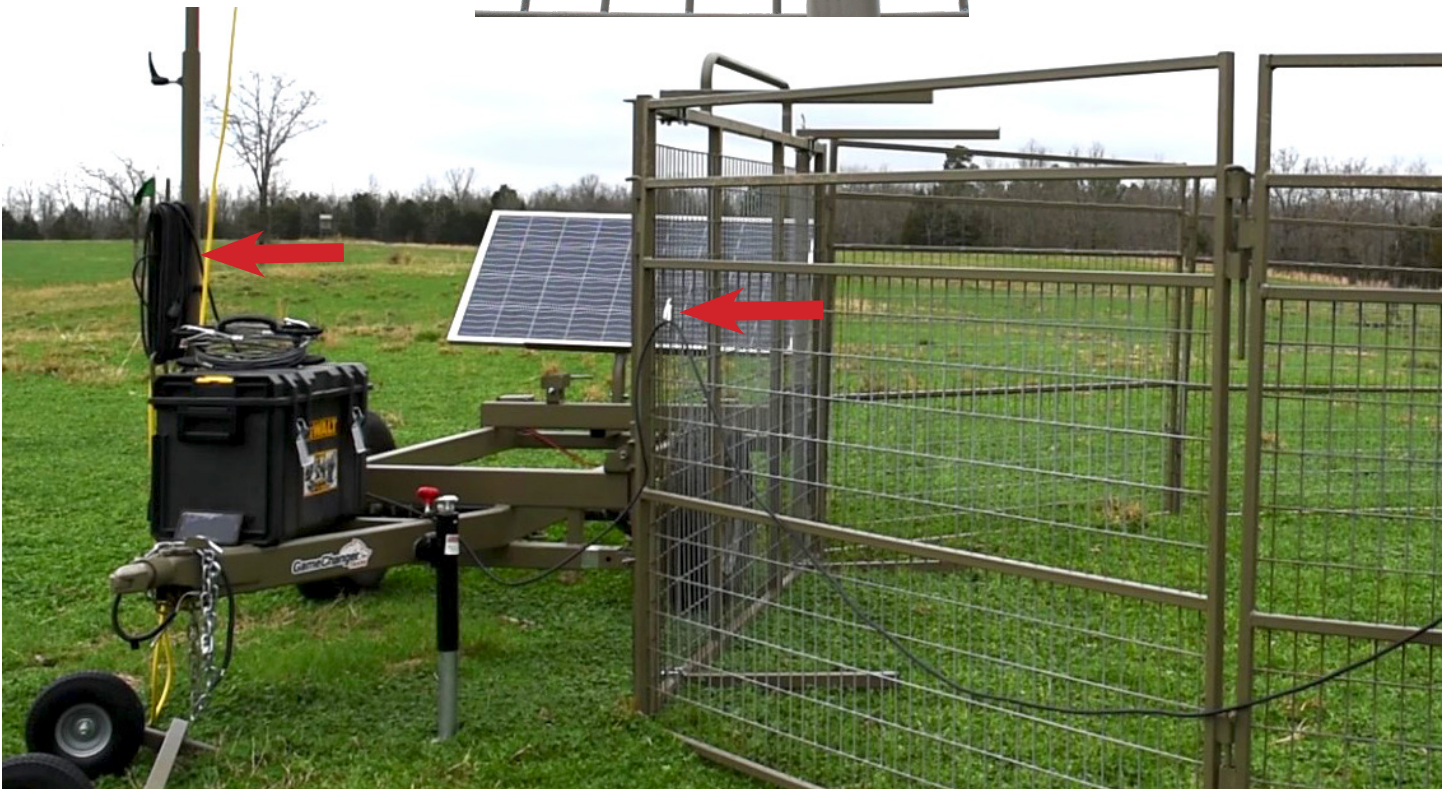
It is suggested two people lift and move gates. However, gates can be easily disassembled by unpinning the gate from the frame and moving it in sections.

If a Gate Caddy has been purchased, one person can slide panels or gates onto the Caddy and roll into place.



3 Wiring

- Unwind the black cord from Antenna Pole.
 - » All traps come with one wire to run to latch.
- Place quick clips on panels leading to latch. Clip black cord in quick clips to keep cord secure on trap.

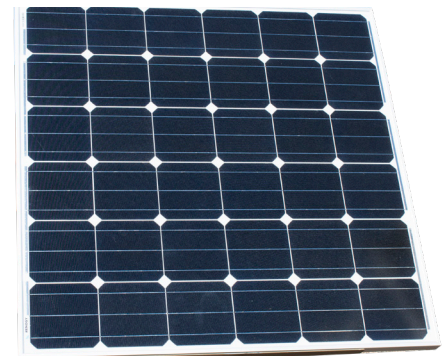


- Locate wiring from latch, pull forward attaching cord and latch on the outside of the trap.
- Tighten cord back up by pulling excess back through the Quick Clips and wrapping back up on the Antenna Pole.
- Always install the latch on the furthest gate on the left when standing outside of the trap.



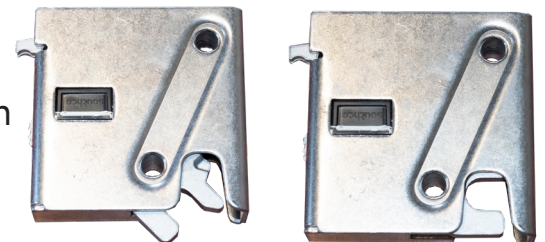
4 Electronics

- Attach Antenna to antenna pole by tightening bolts around pole until secure.
- Plug yellow power/signal wire into the 3-way port located on the camera.
- Mounting Camera: Clamp camera on the pole.
- Attach the 5' Antenna cord to the camera and antenna.
- After camera has been connected for approximately 5 minutes, it should be functioning and ready to view from app.
- Position the Solar Panel facing South by removing the set pin, rotating the solar panel into place, and tighten the bolt lever.



5 Testing Latch

- Push latch to closed position; go to camera app; trigger trap to drop and listen and watch for latch to open.
- It is always a good practice to test the latch before gates are set every time you reset the trap. This will ensure the connection from the camera to latch is working properly and testing the latch before raising the gates minimizes the noise while out at the trap location.



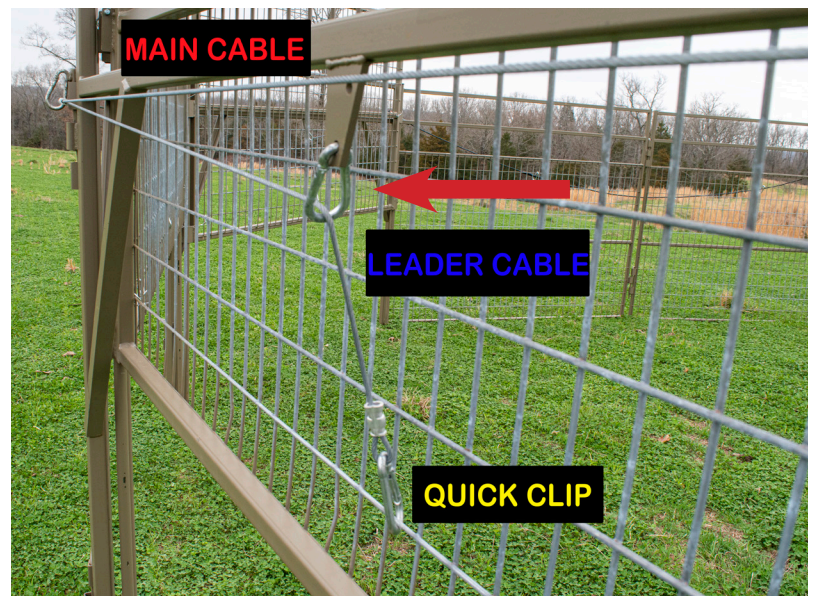
6 JR & Pro Cable Configuration

- Roll out cable in front of gates starting from latch to the last gate. With eye of cable near latch.
- Connect the big eye on cable to latch.
- Run main cable (shown in red) through quick pins.
- Make sure the cable crimp is on the right side of the quick pin.



- Run leaders (shown in blue) through quick clips located in middle of gate frame.
- Raise the drop gates up and clip quick clip in 2x4 wire near the bottom of the drop gates.
- Make sure no cable is twisted and quick pins are straight and facing out.

QUICK PIN



7 Trapping and Moving Trap

- Use **Walk Gate** to access inside of trap. **NEVER** walk under raised gates. Use the walk gate to place bait in trap. Refer to the *S.P.E.A.R. Process* for proper baiting procedures.
- Reverse the order of set-up to take down trap and move to another pre-bait site.



8 Required Trap Maintenance

- Grease all grease points every time trap is set out: 3 jacks and 4 Rollers on Hinge Panel
- Check fluid level in battery once every 30 days
- Check wheel bearings and grease every 6 months
- Check to make sure all wiring has a good connection and free of corrosion every time trap is set out

9 Accessories

Anti-kick for Gate

- To install, simply pull 3/8 pin and attach bracket on horizontal bar as shown.



Cable Anti-Jump Kit

- To install, first attach by looping short cables to one side of all gates and panels.
- Next, unroll the long cable and run through the quick clips located on the short cables.
- Then attach tensioner to the long cable end.
- Finally, pull the slack out of the cable through the tensioner and ratchet until cable is tight.



For additional instructions on how to set-up Game Changer traps, visit our website.