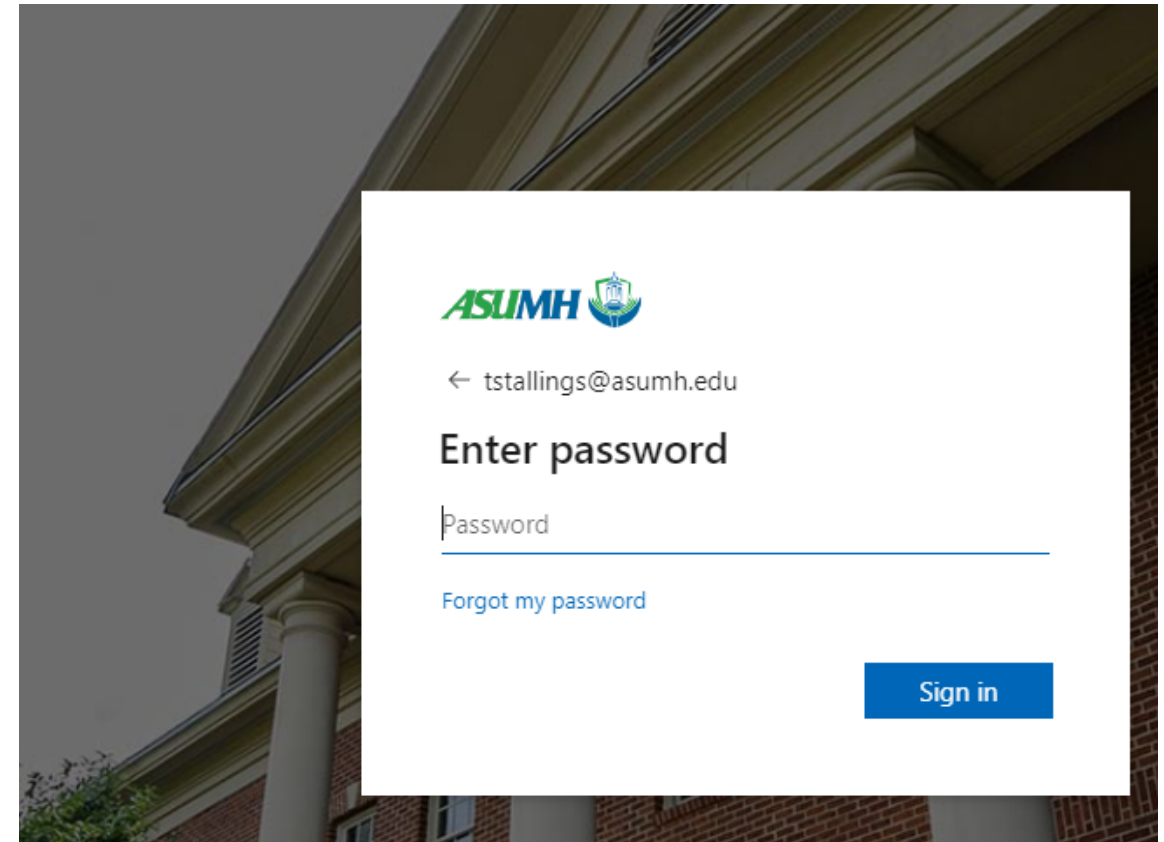
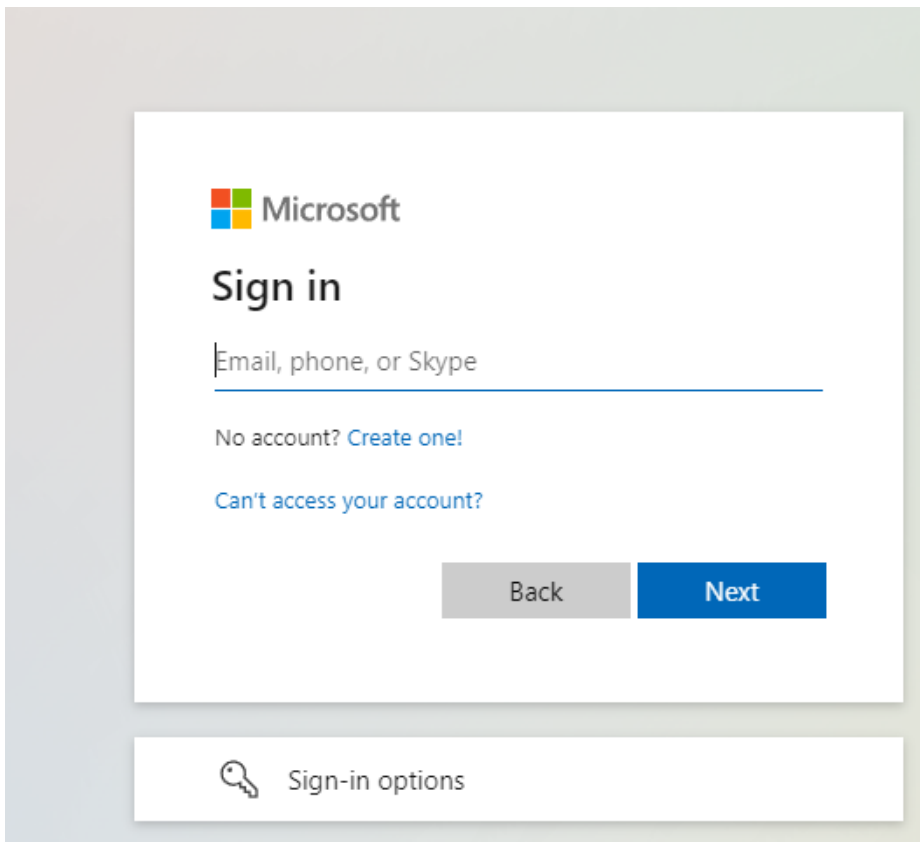
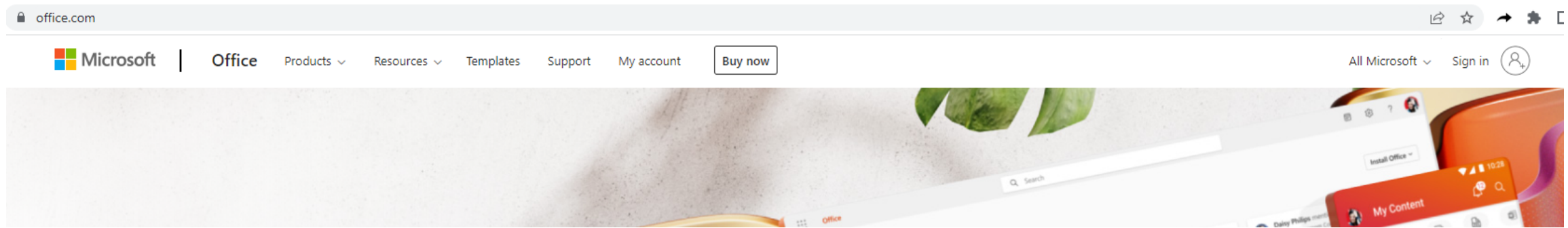


Downloading Office 365 for your computer

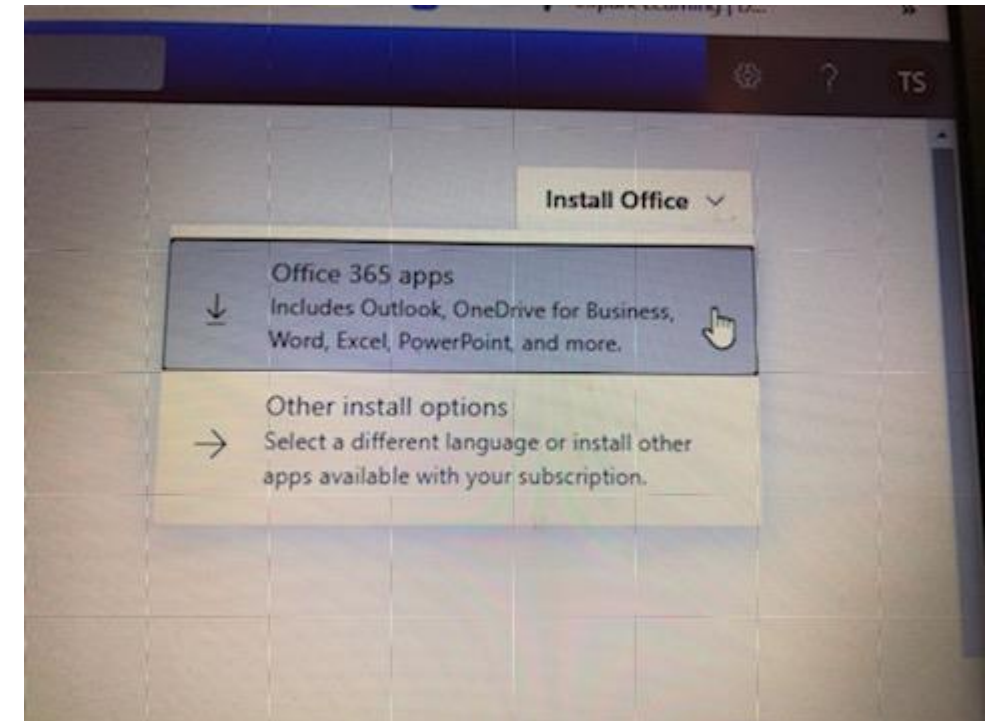
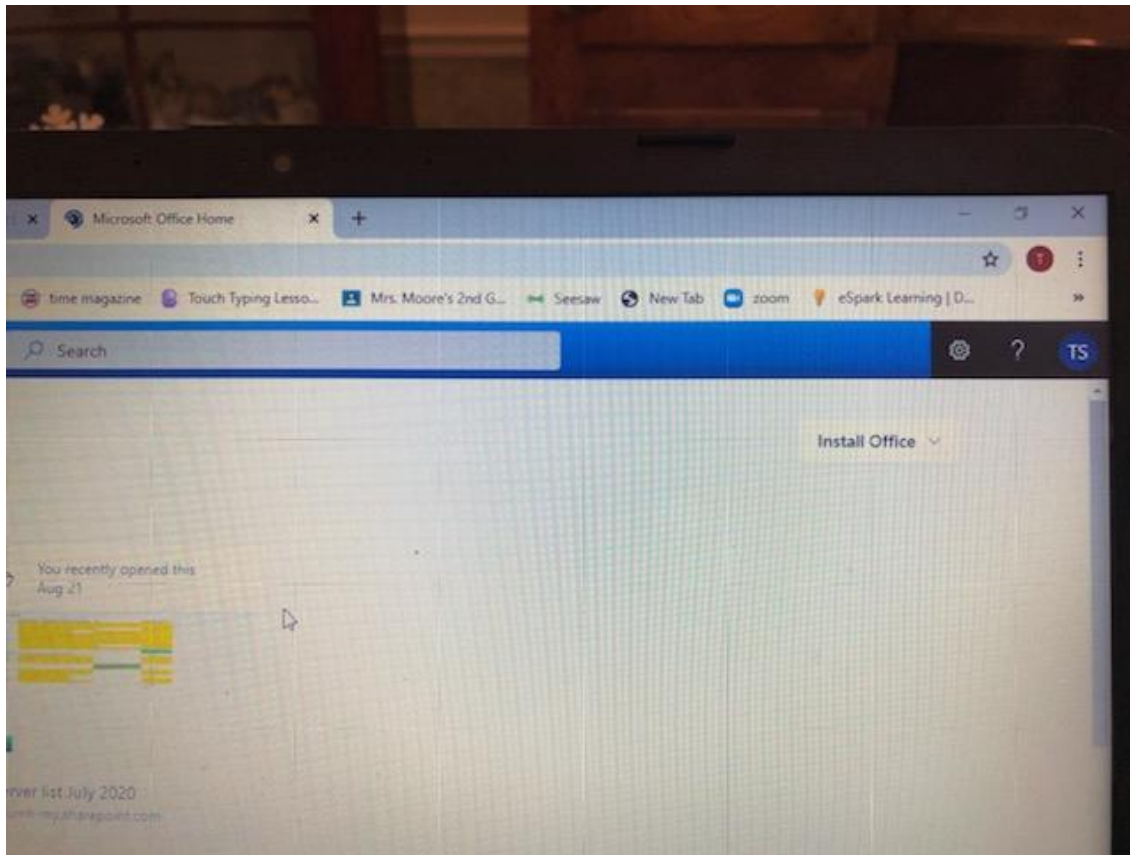
August 23, 2022

Go to office.com and click on the sign in at the right side of the screen. Then enter your full student email address and enter your ASUMH password

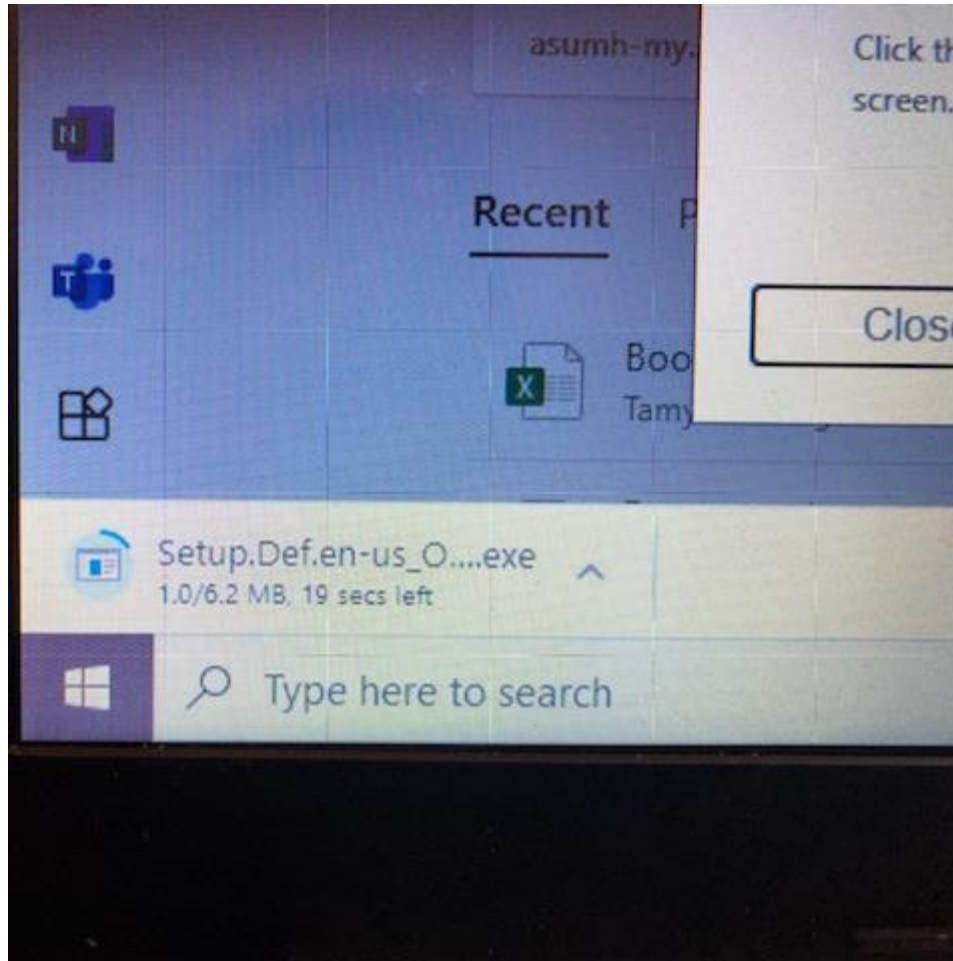


Then in the upper right you will see the install office and when you click on it you will have two options

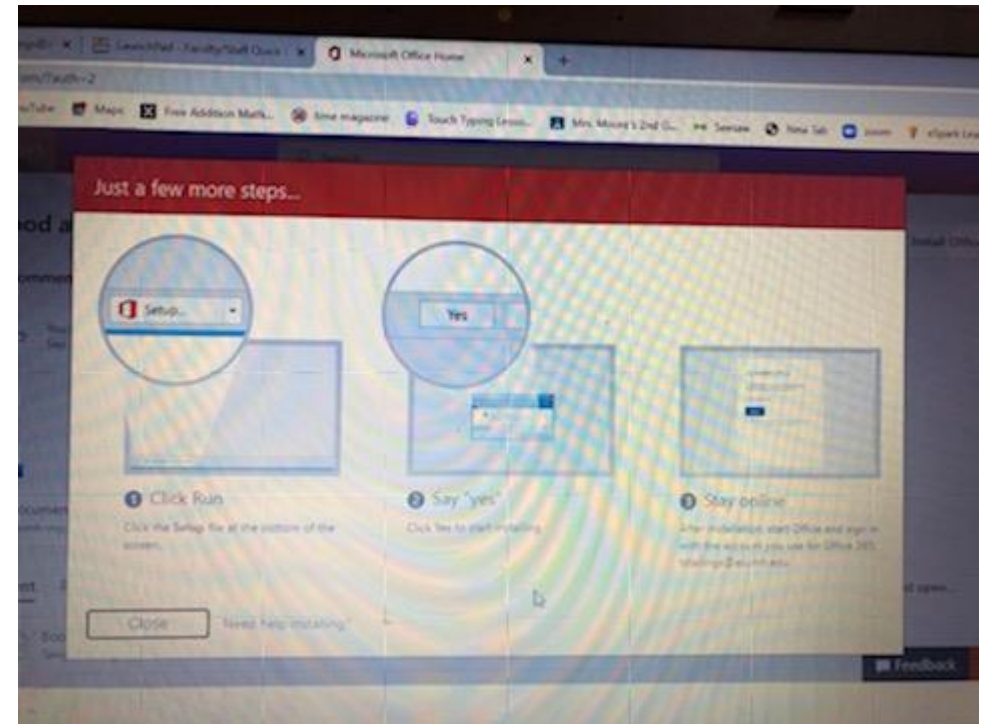
Choose the Office 365 apps to install on your computer



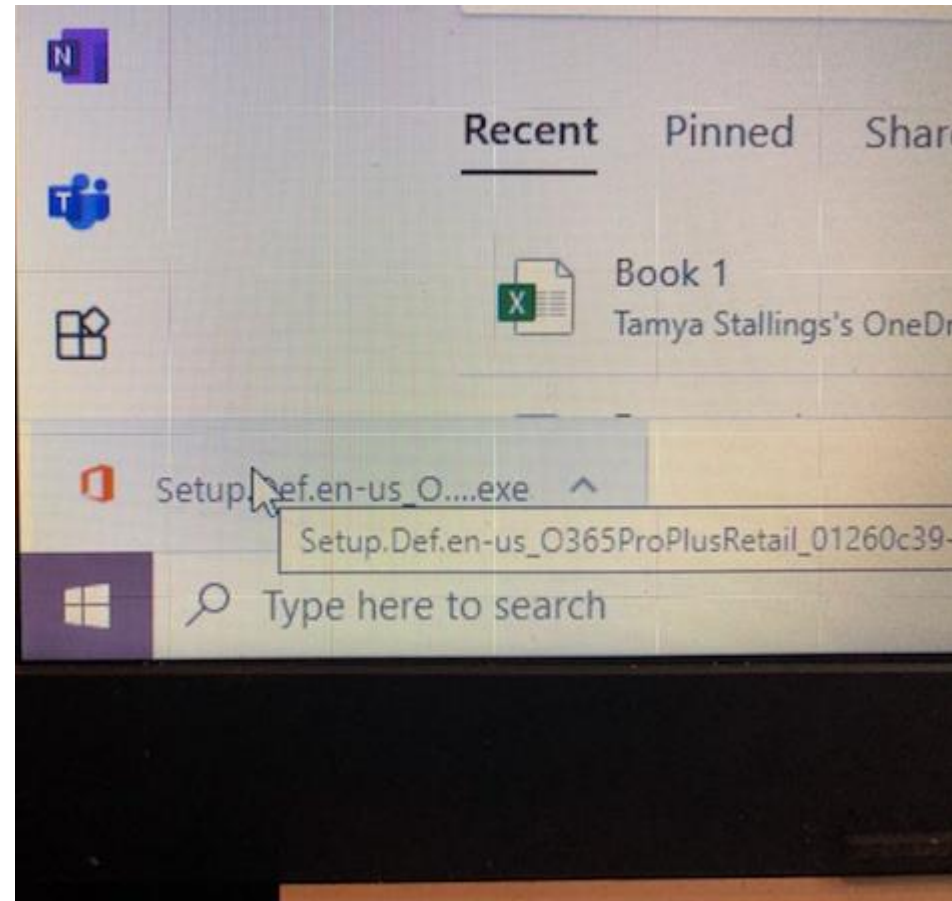
The download will begin in the bottom left corner of your laptop and you will see the progress that it is making.



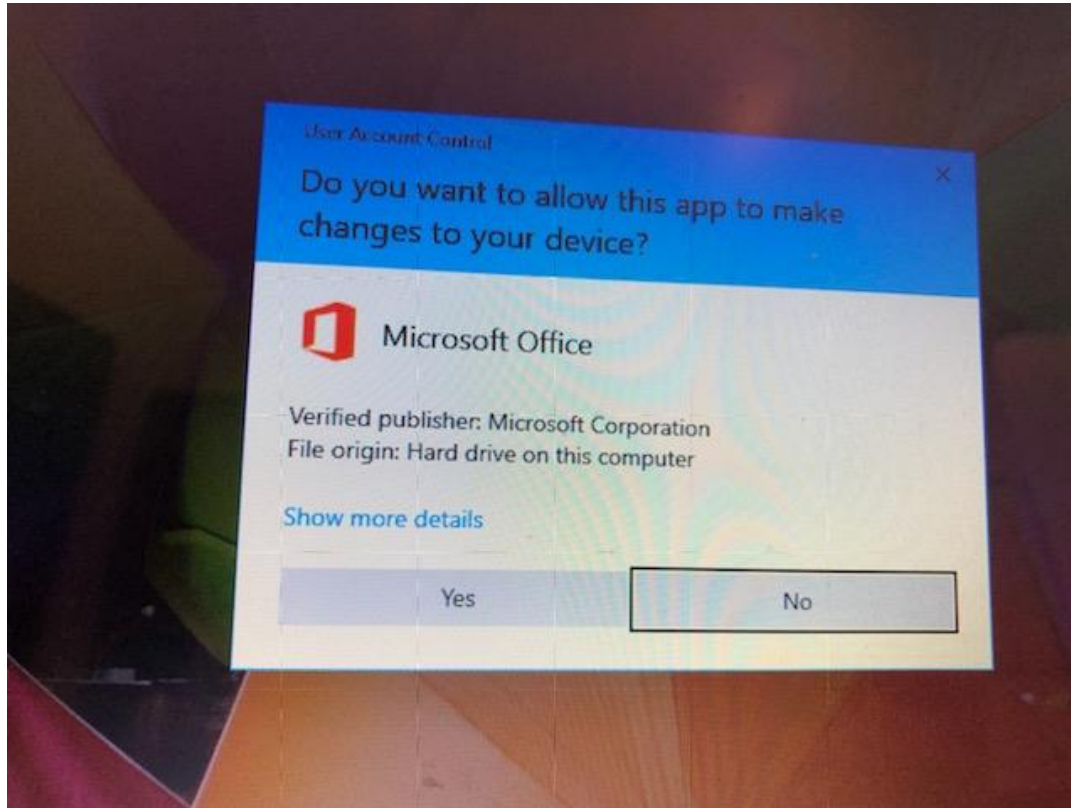
You will also have a pop up screen that looks like this explaining the process as well. You can close it out after you have read it.



Once the download has been done double click on it to start the installation process



You will be asked if you want to make changes to your device which you will answer yes to for it to install on your computer.



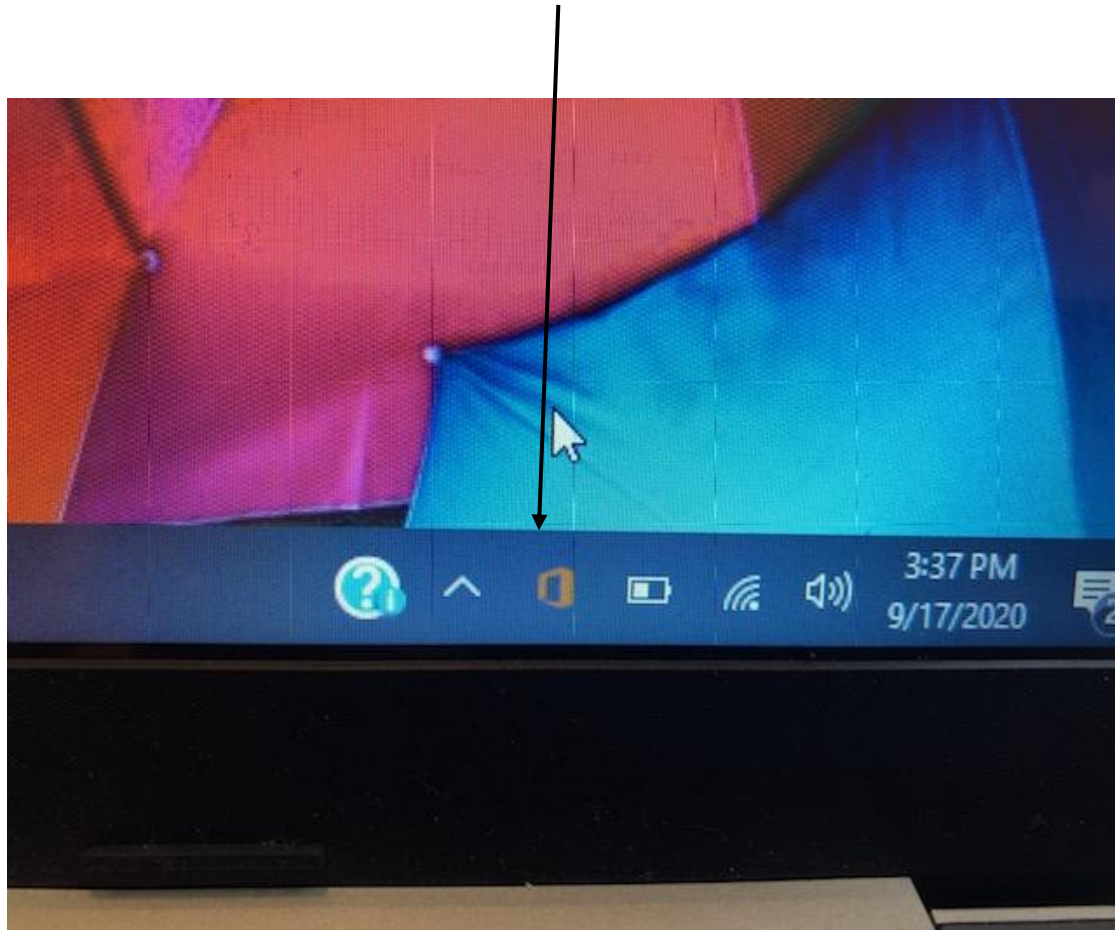
Then you will see the office window showing it is working on the install



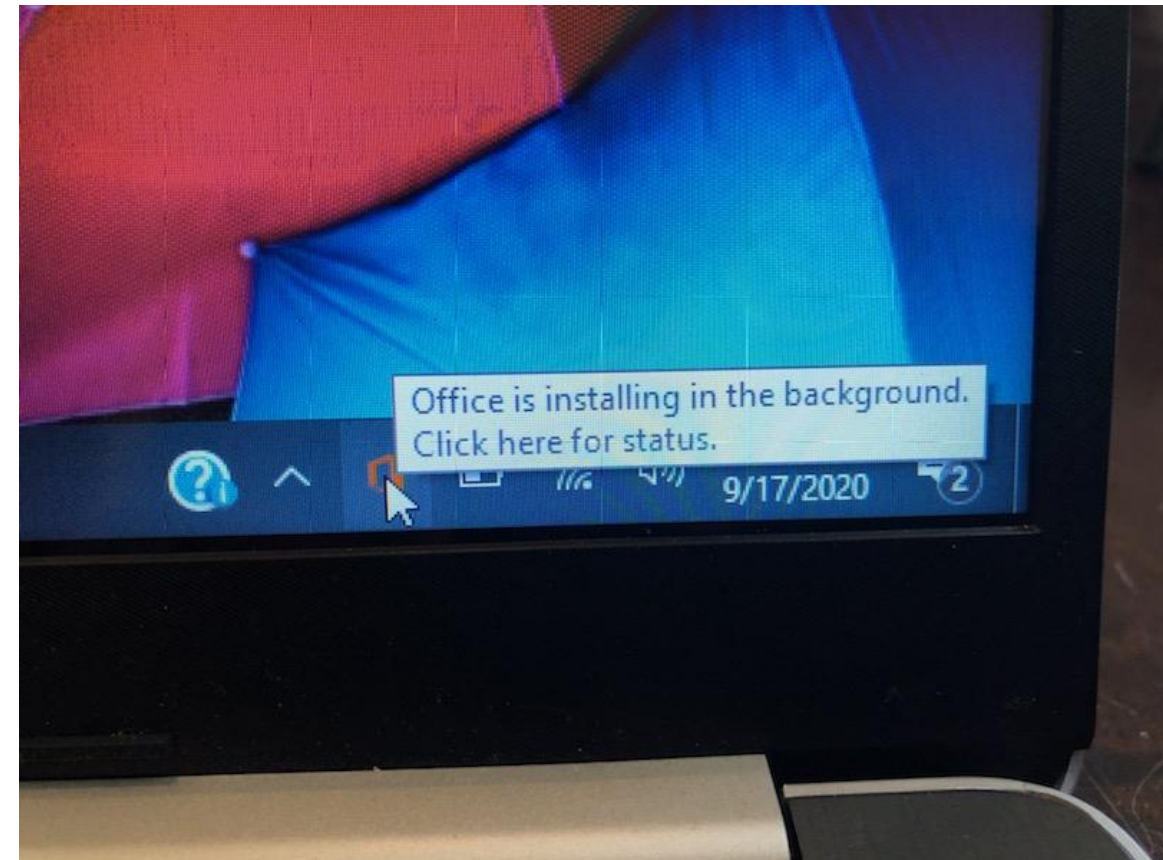
You will get a screen showing where the software is installing. You must be connected to the Internet during the installation of the software. This can take awhile depending on the type of Internet connection that you have at your house.



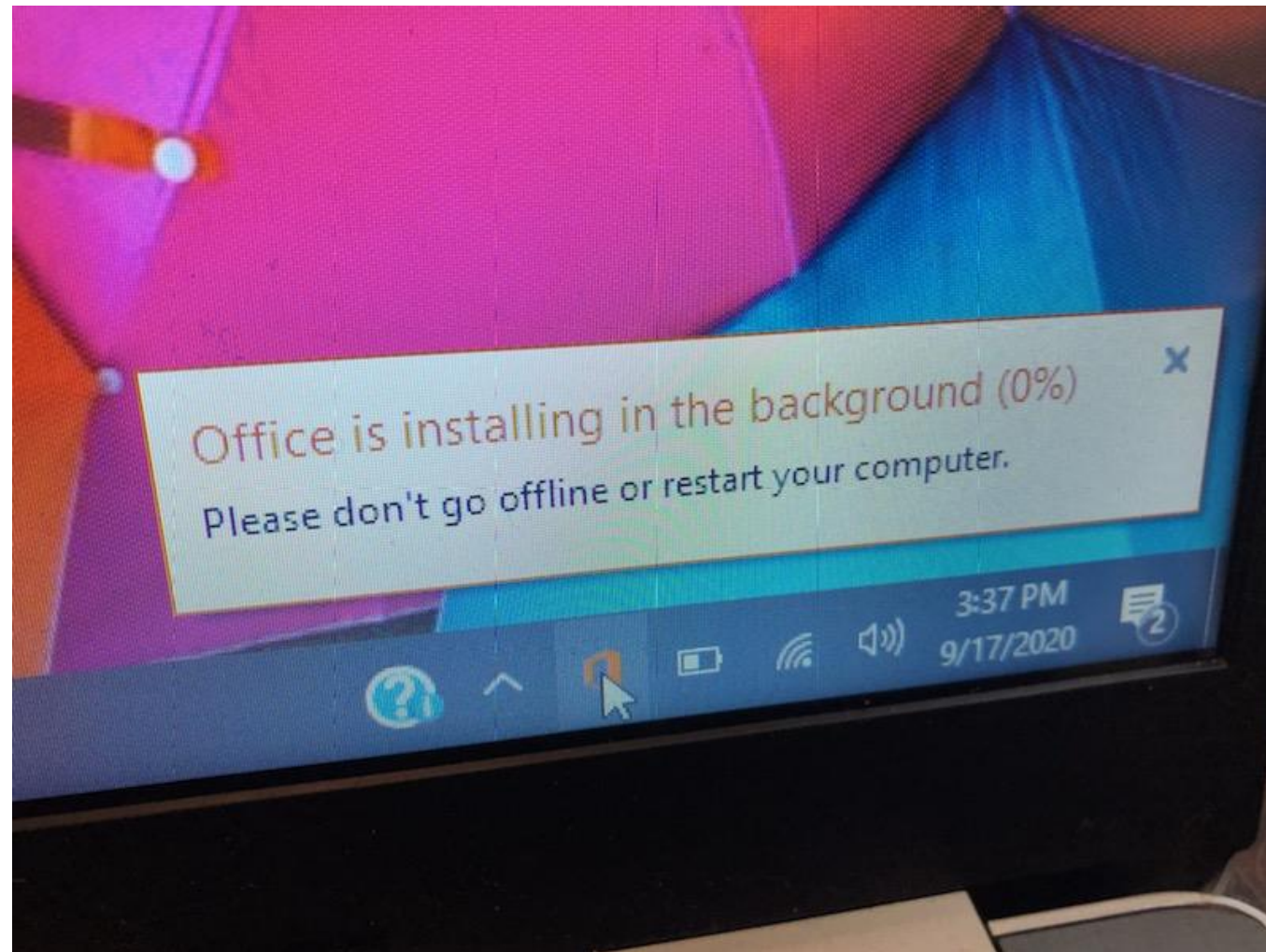
You may minimize the screen and continue to work on your computer with the installation running in the background. The red icon in the bottom right will show you the progress if you need to verify if it is working.



You can click on it and it will tell you the status of your installation

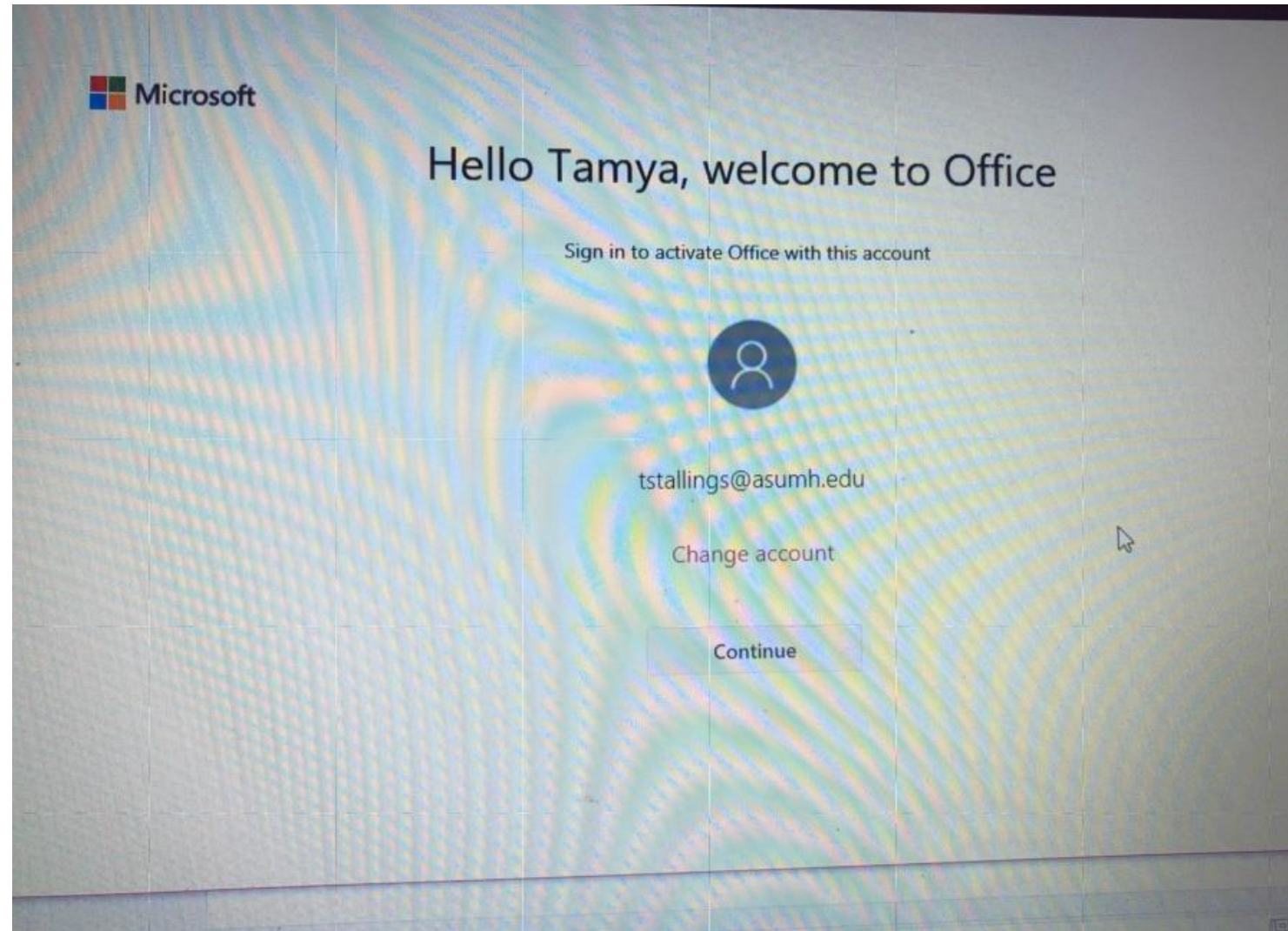


This is the message you may see if you are verifying the installation. Please follow the instructions so it will be able to finish working.

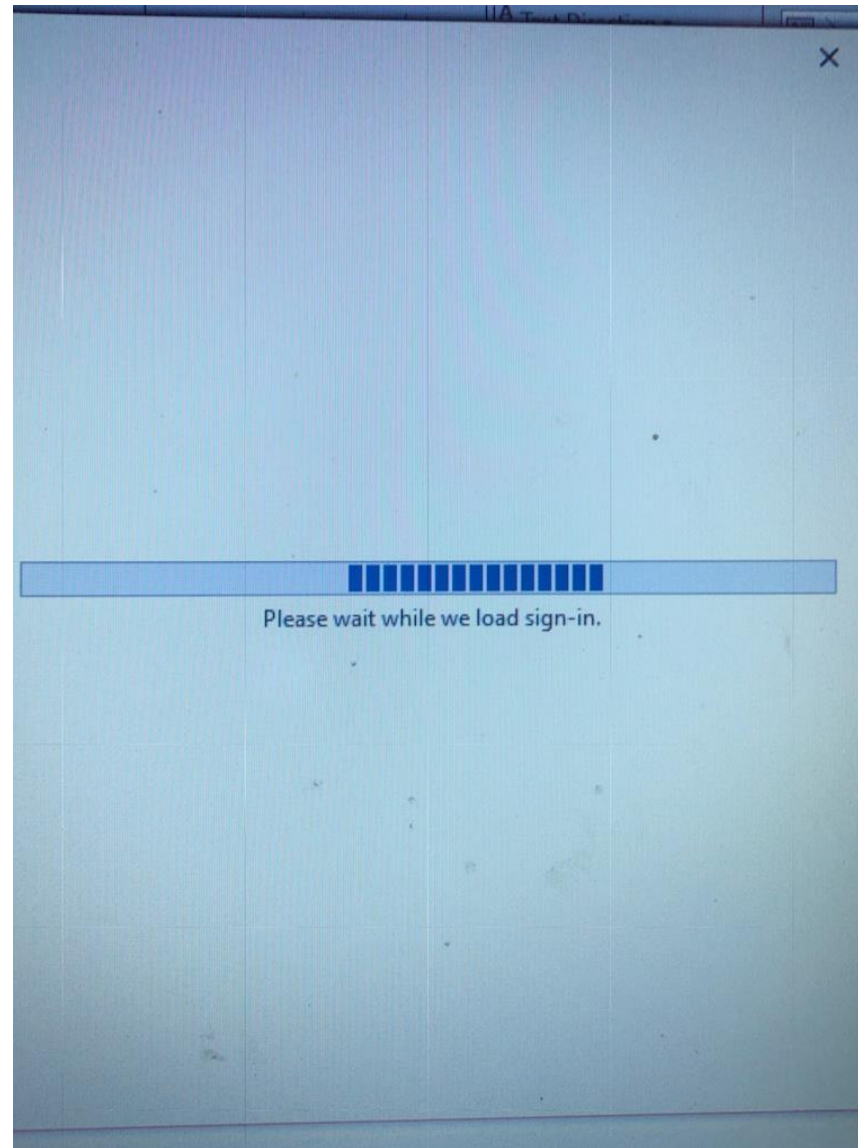


The first time you open up one of the applications (Word, Excel, PowerPoint, etc) you will have to finalize the setup.

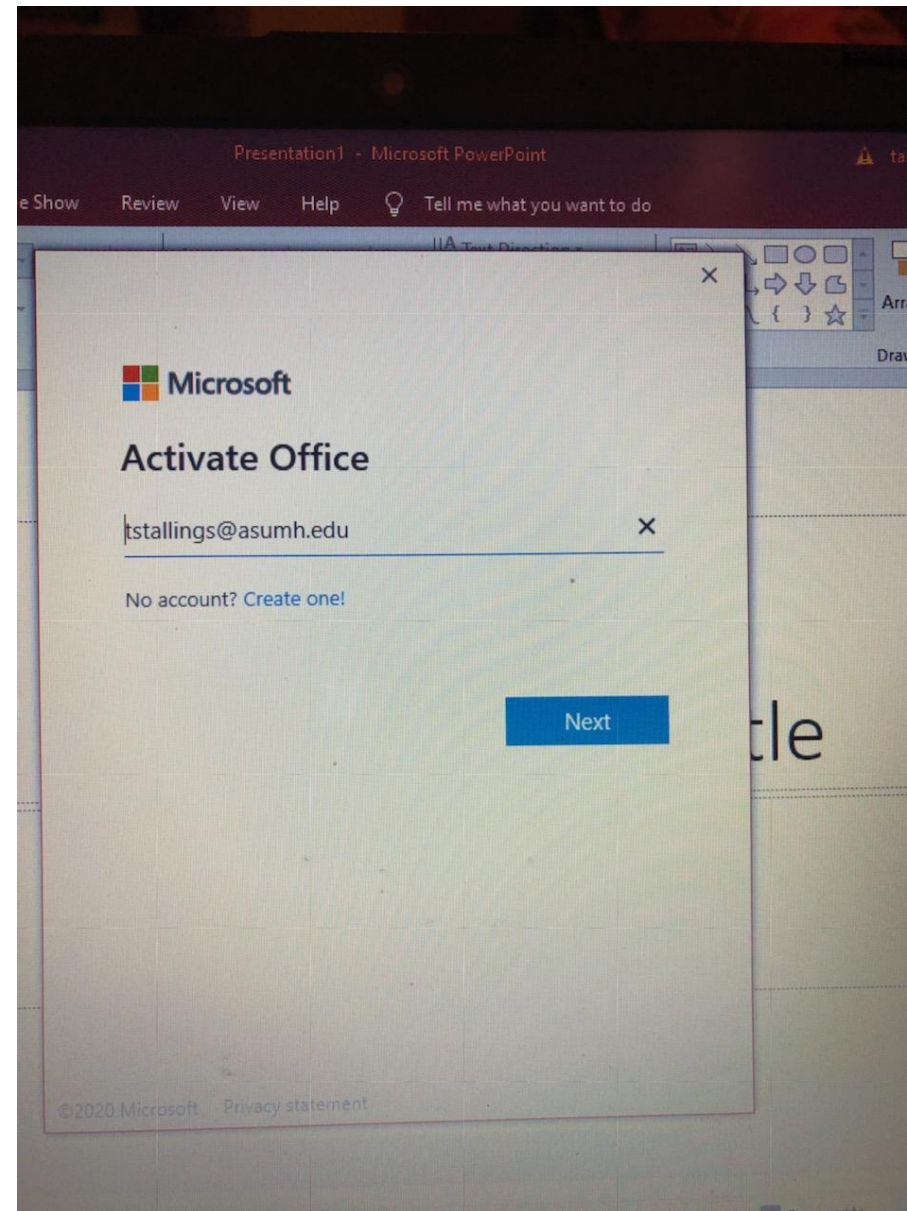
Continue



You may see a
picture showing it is
loading.

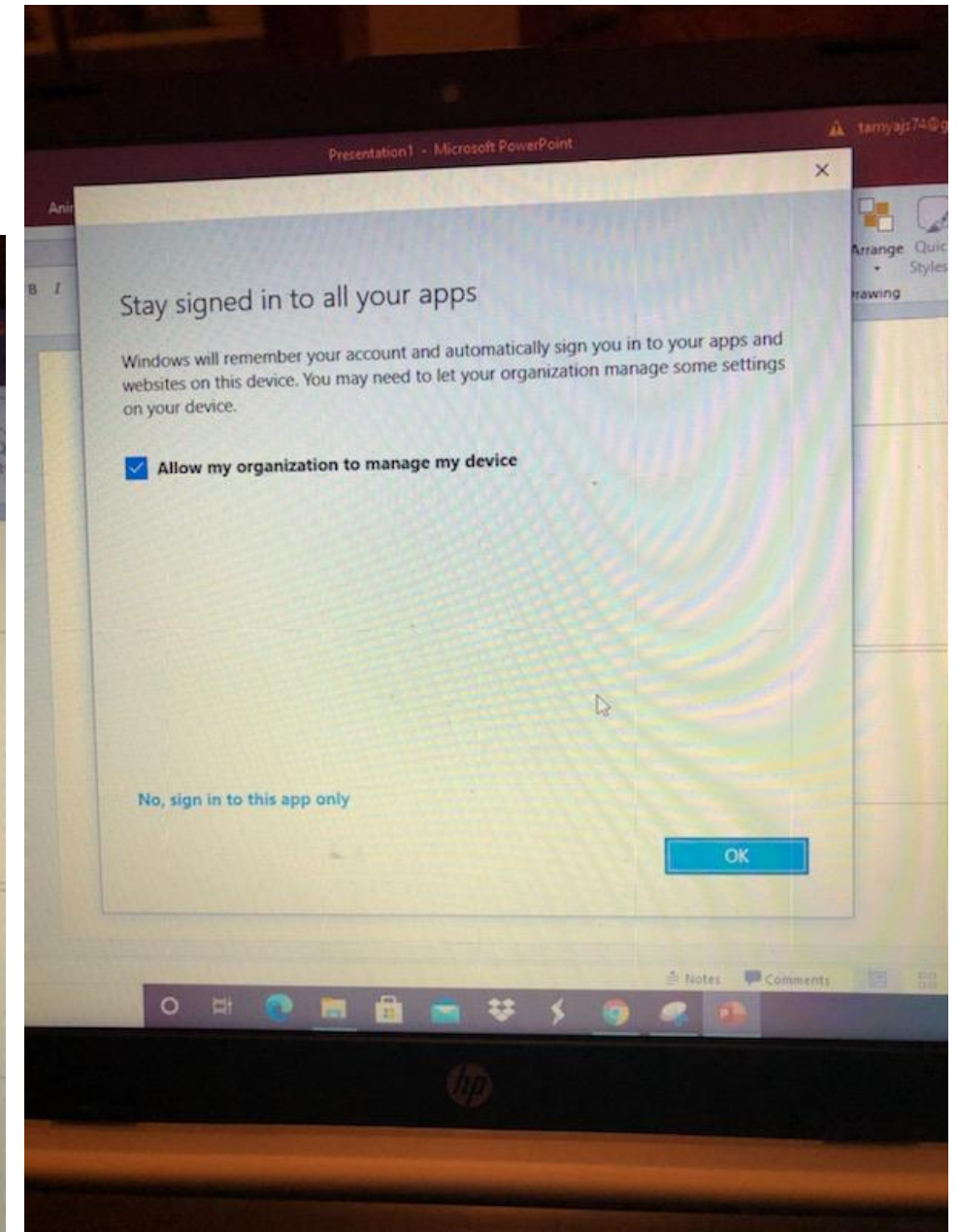
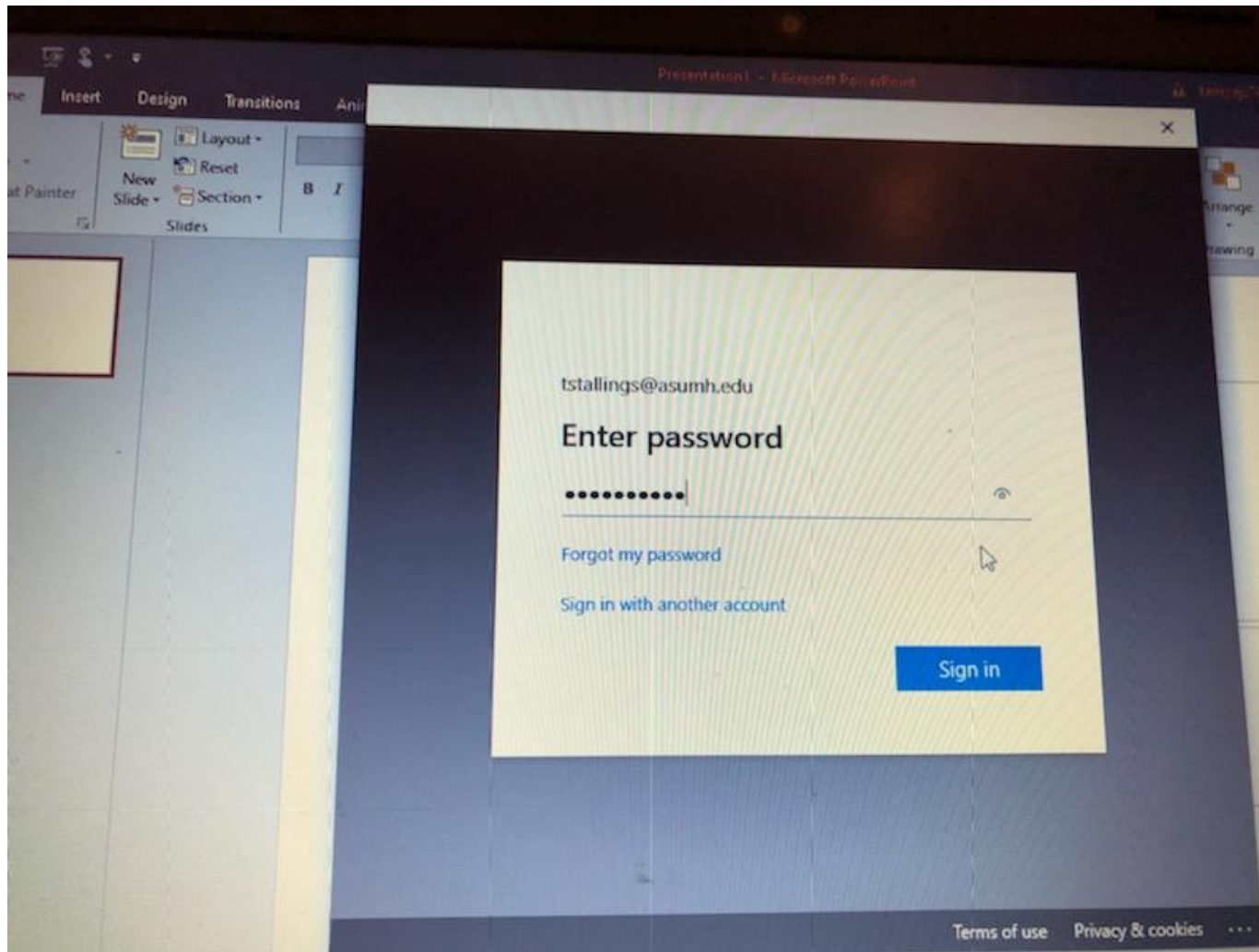


You will need to enter
your email address for
the school so that it
can activate the office



Enter your password that you use for the portal.

Then a screen will pop up that you can uncheck the box if you want and click ok for it to continue.



Now you are all set to use the Office suite on your computer.

