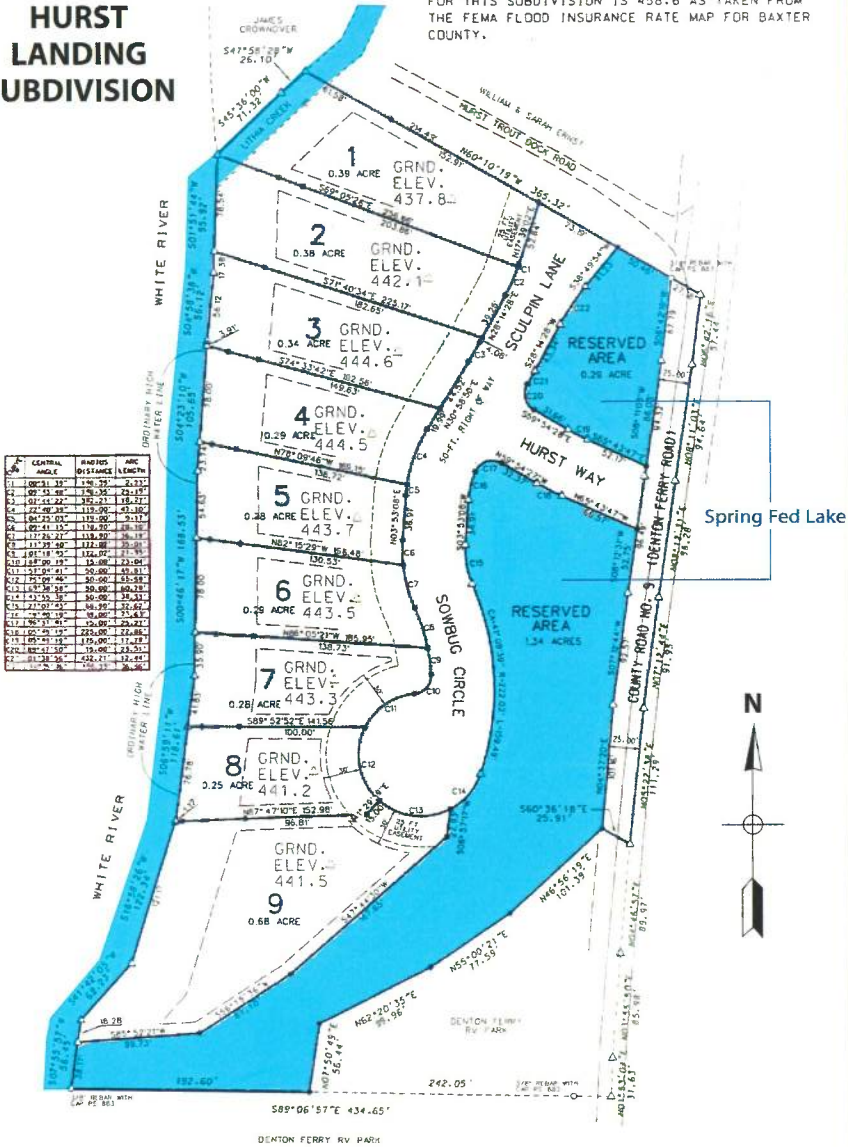


HURST LANDING SUBDIVISION

THE 1% PROBABILITY (100-YEAR) FLOOD ELEVATION FOR THIS SUBDIVISION IS 458.6 AS TAKEN FROM THE FEMA FLOOD INSURANCE RATE MAP FOR BAXTER COUNTY.



STATION	CENTRAL ANGLE	CHORD DISTANCE	CHORD LENGTH
1	100°51'31"	126.25	21.37
2	100°51'31"	126.25	21.37
3	91°41'22"	352.21	18.27
4	102°08'38"	115.00	43.80
5	102°08'38"	115.00	43.80
6	111°21'21"	118.20	18.18
7	111°21'21"	118.20	18.18
8	111°21'21"	118.20	18.18
9	111°21'21"	118.20	18.18
10	111°21'21"	118.20	18.18
11	111°21'21"	118.20	18.18
12	111°21'21"	118.20	18.18
13	111°21'21"	118.20	18.18
14	111°21'21"	118.20	18.18
15	111°21'21"	118.20	18.18
16	111°21'21"	118.20	18.18
17	111°21'21"	118.20	18.18
18	111°21'21"	118.20	18.18
19	111°21'21"	118.20	18.18
20	111°21'21"	118.20	18.18
21	111°21'21"	118.20	18.18
22	111°21'21"	118.20	18.18
23	111°21'21"	118.20	18.18
24	111°21'21"	118.20	18.18
25	111°21'21"	118.20	18.18
26	111°21'21"	118.20	18.18
27	111°21'21"	118.20	18.18
28	111°21'21"	118.20	18.18
29	111°21'21"	118.20	18.18
30	111°21'21"	118.20	18.18
31	111°21'21"	118.20	18.18
32	111°21'21"	118.20	18.18
33	111°21'21"	118.20	18.18
34	111°21'21"	118.20	18.18
35	111°21'21"	118.20	18.18
36	111°21'21"	118.20	18.18
37	111°21'21"	118.20	18.18
38	111°21'21"	118.20	18.18
39	111°21'21"	118.20	18.18
40	111°21'21"	118.20	18.18
41	111°21'21"	118.20	18.18
42	111°21'21"	118.20	18.18
43	111°21'21"	118.20	18.18
44	111°21'21"	118.20	18.18
45	111°21'21"	118.20	18.18
46	111°21'21"	118.20	18.18
47	111°21'21"	118.20	18.18
48	111°21'21"	118.20	18.18
49	111°21'21"	118.20	18.18
50	111°21'21"	118.20	18.18
51	111°21'21"	118.20	18.18
52	111°21'21"	118.20	18.18
53	111°21'21"	118.20	18.18
54	111°21'21"	118.20	18.18
55	111°21'21"	118.20	18.18
56	111°21'21"	118.20	18.18
57	111°21'21"	118.20	18.18
58	111°21'21"	118.20	18.18
59	111°21'21"	118.20	18.18
60	111°21'21"	118.20	18.18
61	111°21'21"	118.20	18.18
62	111°21'21"	118.20	18.18
63	111°21'21"	118.20	18.18
64	111°21'21"	118.20	18.18
65	111°21'21"	118.20	18.18
66	111°21'21"	118.20	18.18
67	111°21'21"	118.20	18.18
68	111°21'21"	118.20	18.18
69	111°21'21"	118.20	18.18
70	111°21'21"	118.20	18.18
71	111°21'21"	118.20	18.18
72	111°21'21"	118.20	18.18
73	111°21'21"	118.20	18.18
74	111°21'21"	118.20	18.18
75	111°21'21"	118.20	18.18
76	111°21'21"	118.20	18.18
77	111°21'21"	118.20	18.18
78	111°21'21"	118.20	18.18
79	111°21'21"	118.20	18.18
80	111°21'21"	118.20	18.18
81	111°21'21"	118.20	18.18
82	111°21'21"	118.20	18.18
83	111°21'21"	118.20	18.18
84	111°21'21"	118.20	18.18
85	111°21'21"	118.20	18.18
86	111°21'21"	118.20	18.18
87	111°21'21"	118.20	18.18
88	111°21'21"	118.20	18.18
89	111°21'21"	118.20	18.18
90	111°21'21"	118.20	18.18
91	111°21'21"	118.20	18.18
92	111°21'21"	118.20	18.18
93	111°21'21"	118.20	18.18
94	111°21'21"	118.20	18.18
95	111°21'21"	118.20	18.18
96	111°21'21"	118.20	18.18
97	111°21'21"	118.20	18.18
98	111°21'21"	118.20	18.18
99	111°21'21"	118.20	18.18
100	111°21'21"	118.20	18.18



CONSOLIDATED LAND SERVICES INCORPORATED

ENGINEERING, SURVEYING AND MATERIAL TESTING
EAST HIGHWAY 62
MOUNTAIN HOME, ARKANSAS
(870) 425-6161

Established Ground Elev. & 1% Probability Flood Elev. for LEISURE HOMES INCORPORATION
Mountain Home, Arkansas

