



System Factbook



2020-2021

Arkansas State University System 2020-2021 Factbook

ASU System Board of Trustees

Mr. Price Gardner, Chair, Little Rock
Ms. Christy Clark, Vice Chair, Little Rock
Dr. Tim D. Langford, Secretary, Little Rock
Mr. Neil Crowson, Jonesboro
Mr. Steve Eddington, Benton
Bishop Robert G. Rudolph Jr., Bryant
Mr. Paul Rowton, Harrisburg

Dr. Charles L. Welch, President

Any questions concerning
material contained herein
should be directed to:

Office of Strategic Research
Arkansas State University System
501 Woodlane Street, Suite 600
Little Rock, Arkansas 72201

Telephone: (501) 660-1015
E-mail: eatchison@asusystem.edu



Table of Contents

Foreword	4
Quick Reference	5
ABOUT THE SYSTEM	7
Arkansas State University System	8
Arkansas State University	9
Arkansas State University-Beebe	10
Arkansas State University-Mountain Home	11
Arkansas State University-Newport	12
Arkansas State University Mid-South	13
Arkansas State University Three Rivers	14
Henderson State University	15
ASU System Organizational Structure	16
Institutional Classifications (SREB & Carnegie Foundation)	17
ACADEMIC PROGRAMS	18
By Level and Distance Education Offerings	19
By Level and Broad Program Category	20
DEGREES & CERTIFICATES AWARDED	22
Degrees & Certificates Awarded Summary	23
ENROLLMENT	24
System Academic Year Enrollment Summary	25
System Fall Enrollment Summary	26
A-State Total	27
A-State (Excludes Campus Querétaro)	28
Arkansas State University Campus Querétaro	29
ASU-Beebe	30
ASU-Mountain Home	31
ASU-Newport	32
ASU Mid-South	33
ASU Three Rivers	34
Henderson State University	35
Geographic Origin of Total Enrollment By Arkansas County	36
Geographic Origin of Total Enrollment By State	38
First-Time in College Students	40
First-Time in College Students By ACT Score Distribution	41
First-Time Transfer Students	42
Graduate Students	43

ACADEMIC PROGRESS	44
Retention Rates	45
Graduation Rates	46
TUITION & REQUIRED FEES	47
Tuition & Required Fees	48
STUDENT FINANCIAL AID	49
Student Financial Aid Summary (Undergraduates)	50
EMPLOYEES	51
System Employee Summary (Full-Time)	52
System Employee Summary (Part-Time)	53
Faculty Summary	54

Foreword



Welcome to the **2020-2021 Arkansas State University System Factbook!** The ASU System Factbook is a publication produced by the Office of Strategic Research that outlines enrollment, faculty and staff data, and other comprehensive information for the Arkansas State University System campuses. The ASU System Factbook is produced annually and is intended to provide answers to questions that are frequently asked by the administration, faculty, staff, students, alumni and other university constituents.

The definitions and guidelines used to compile this information are provided by the Integrated Postsecondary Education Data System (IPEDS), Arkansas State University Office of Strategic Research, and the Arkansas Division of Higher Education (ADHE). It is important to note that where possible data reported by the Office of Strategic Research matches information reported to federal, state and regional agencies. However, due to differences in reporting guidelines, definitions, and the timing of when the information was prepared, not all of the information contained herein is aligned.

In order to make information more readily available to all constituents, the ASU System Factbook is available in PDF format on the Strategic Research web page. You can reach our web page through the Arkansas State University System web site, or you can go to our site directly at

<https://www.asusystem.edu/research>

A comprehensive document of this magnitude requires the assistance of a number of people on the various ASU System campuses. Many thanks to all who helped make the **2020-2021 Arkansas State University System Factbook** a successful reality. Should you have any questions, comments or corrections regarding this document, please contact the Office of Strategic Research.

Quick Reference

Academic Awards & Degrees: 9,684

Fiscal Year 2019-2020

Certificate (includes Cert. of Proficiency & Technical Cert.)..... 2,700

A-State.....	33
Beebe	764
Mountain Home	286
Newport	669
Mid-South	384
Three Rivers	530
HSU	34

Associate..... 2,075

A-State.....	545
Beebe	797
Mountain Home	219
Newport	280
Mid-South	95
Three Rivers	124
HSU	15

Bachelor's..... 2,198

A-State.....	1,712
HSU	486

Graduate Degrees & Certificates..... 2,711

A-State.....	2,460
HSU	251

Facilities & Acreage

Fiscal Year 2020-2021

Campuses	# Acres	# Buildings
A-State.....	1,246	188
Beebe	706	69
Mountain Home	130	13
Newport	214	25
Mid-South	92	14
Three Rivers	46	14
HSU	159	68
ASU System	2,593	391

* FTE is calculated by dividing undergraduate credit hours attempted by 15 and graduate credit hours attempted by 12.

** Includes 21 staff at the ASU System Office (20 full-time, 1 part-time). Does not include graduate assistants.

*** A-State's faculty includes instructional and research faculty. Employee figures do not include Campus Querétaro, Mexico.

Source: Office of Strategic Research, ASU System

Annual Tuition & Required Fees

Fall 2020

Based on 12 hours for undergraduate students and 9 hours for graduate students.

Undergraduate Resident

A-State.....	\$7,315
Beebe	2,928
Mountain Home	2,904
Newport	2,856
Mid-South	3,274
Three Rivers	3,458
HSU	7,392

Undergraduate Nonresident

A-State.....	\$12,883
Beebe	4,656
Mountain Home	4,524
Newport	4,320
Mid-South	4,234
Three Rivers	5,882
HSU	9,312

Graduate Resident

A-State.....	\$7,069
HSU	6,804

Graduate Nonresident

A-State.....	\$12,055
HSU	8,676

Employees: 3,595**

Fall 2020

	Faculty	Staff
Full-Time.....	991	1,754
A-State***	536	1,033
Beebe	94	175
Mountain Home	41	65
Newport	69	91
Mid-South	40	85
Three Rivers	29	70
HSU	182	215
Part-Time	518	332
A-State***	188	191
Beebe	77	26
Mountain Home	46	28
Newport	63	46
Mid-South	62	21
Three Rivers	41	13
HSU	41	6



2020-2021 Quick Reference

Board of Trustees

Mr. Price Gardner, Chair, Little Rock
 Ms. Christy Clark, Vice Chair, Little Rock
 Dr. Tim D. Langford, Secretary, Little Rock
 Mr. Neil Crowson, Jonesboro
 Mr. Steve Eddington, Benton
 Bishop Robert G. Rudolph Jr., Bryant
 Mr. Paul Rowton, Harrisburg

Dr. Charles L. Welch, President

System Campuses

Arkansas State University
 Arkansas State University - Beebe
 Arkansas State University - Mountain Home
 Arkansas State University - Newport
 Arkansas State University Mid-South
 Arkansas State University Three Rivers
 Henderson State University

501 Woodlane Street, Suite 600
 Little Rock, AR 72201
 (501) 660-1000
www.asusystem.edu

Quick Reference

Student Enrollment: 25,646

Fall 2020

Arkansas State University System

Enrollment	25,646
Full-Time-Equivalent* (FTE) (67.0%)	16,279

Undergraduate (includes high school)

A-State (66.7%)	9,223
Beebe (68.1%)	2,982
Mountain Home (68.1%)	1,271
Newport (68.1%)	1,941
Mid-South (68.1%)	1,203
Three Rivers (68.1%)	1,243
HSU (68.1%)	2,628

Graduate

A-State (89.6%)	4,620
HSU (10.4%)	535

Male (37.5%)

A-State (36.7%)	5,082
Beebe (37.1%)	1,107
Mountain Home (39.6%)	503
Newport (35.0%)	680
Mid-South (38.7%)	466
Three Rivers (38.9%)	483
HSU (41.0%)	1,297

Female (62.4%)

A-State (63.2%)	8,747
Beebe (62.3%)	1,858
Mountain Home (60.4%)	768
Newport (64.8%)	1,257
Mid-South (61.3%)	737
Three Rivers (61.1%)	760
HSU (59.0%)	1,866

Unknown Gender (0.1%)

A-State (0.1%)	14
Beebe (0.6%)	17
Newport (0.2%)	4

Ethnic Minorities (22.3%, excludes Unknown & International)

A-State (19.3%)	5,723
Beebe (15.5%)	463
Mountain Home (7.8%)	99
Newport (21.6%)	419
Mid-South (63.9%)	769
Three Rivers (23.9%)	297
HSU (31.8%)	1,007

Age as of September 1st	Under 25	25 & Older
A-State	8,543	5,300 (38.3%)
Beebe	2,413	569 (19.1%)
Mountain Home	885	386 (30.4%)
Newport	1,393	548 (28.2%)
Mid-South	953	250 (20.8%)
Three Rivers	969	274 (22.0%)
HSU	2,476	687 (21.7%)

Enrollment from Arkansas (79.3%)

A-State (65.8%)	9,106
Beebe (98.5%)	2,960
Mountain Home (95.6%)	1,215
Newport (96.2%)	1,868
Mid-South (87.4%)	1,052
Three Rivers (99.7%)	1,239
HSU (85.6%)	2,708

Enrollment from Out-of-State (15.8%)

A-State (25.8%)	3,578
Beebe (0.5%)	16
Mountain Home (4.4%)	56
Newport (2.6%)	51
Mid-South (12.0%)	144
Three Rivers (0.2%)	2
HSU (13.3%)	420

Enrollment from Foreign Countries (4.9%)

A-State (8.4%)	1,159
Beebe (0.2%)	6
Mountain Home (0.0%)	0
Newport (1.1%)	22
Mid-South (0.6%)	7
Three Rivers (0.2%)	2
HSU (1.1%)	35

First-Year Retention Rate: 65.9%

Fall 2018 to Fall 2019

	First-Time Cohort	% Retained
A-State	1,701	75.1%
Beebe	661	57.9%
Mountain Home	151	51.0%
Newport	296	62.8%
Mid-South	116	40.5%
Three Rivers	75	53.3%
HSU	842	62.0%

Student Financial Aid

Academic Year 2018-2019

Based on all undergraduate students.

Awarded Grant or Scholarship Aid	69.8%
A-State	75.1%
Beebe	54.4%
Mountain Home	86.0%
Newport	53.7%
Mid-South	40.5%
Three Rivers	79.8%
HSU	83.3%

Awarded Pell Grant	40.7%
A-State	39.9%
Beebe	36.6%
Mountain Home	50.9%
Newport	38.6%
Mid-South	36.1%
Three Rivers	29.2%
HSU	51.0%

Disbursed Federal Student Loan	33.8%
A-State	50.0%
Beebe	14.1%
Mountain Home	19.7%
Newport	16.3%
Mid-South	0.0%
Three Rivers	18.0%
HSU	46.3%

Academic Programs Offered: 647

Fall 2020

Undergraduate (82.2%)	Certificates	Degrees
A-State (22.0%)	25	92
Beebe (15.4%)	55	27
Mountain Home (12.0%)	42	22
Newport (13.3%)	51	20
Mid-South (9.2%)	34	15
Three Rivers (13.7%)	58	15
HSU (14.3%)	26	50

Graduate (17.8%)	Certificates	Degrees
A-State (80.0%)	28	64
HSU (20.0%)	11	12



About the System

Arkansas State University System



BOARD OF TRUSTEES

The Trustees of the Arkansas State University System serve as a board of management and control of institution campuses in Jonesboro, Beebe, Mountain Home, Newport, West Memphis, Malvern, and Arkadelphia.

In this capacity, the Trustees hire the ASU System president to serve as the Chief Executive Officer, approve the curriculum of the institution, annually approve an operating budget, establish policies for the efficient operation of the institution, and approve those matters which require participation of the governing board of the System. Trustees' duties include: appointing, supporting, and assessing the performance of the president; maintaining the clarity of the mission of ASU System; approving strategic plans; approving the educational program; ensuring the well-being of the students, faculty and staff; ensuring strong financial management; approving significant faculty and staff appointments and dismissals; ensuring adequate resources for quality programs; preserving institutional autonomy; interpreting the campus to the community; and interpreting the needs of society to the campus.

The governor of Arkansas appoints members of the Board of Trustees for a period of five years. The Senate of the General Assembly must confirm each appointment.

BOARD OF TRUSTEES W/TERM ENDING

Mr. Price Gardner, Chair, Little Rock - 2022

Ms. Christy Clark, Vice Chair, Little Rock - 2023

Dr. Tim Langford, Secretary, Little Rock - 2024

Mr. Niel Crowson, Jonesboro - 2025

Mr. Steve Eddington, Benton - 2026

Bishop Robert G. Rudolph, Jr., Bryant - 2027

Mr. Paul Rowton, Harrisburg - 2028



PRESIDENT OF ARKANSAS STATE UNIVERSITY SYSTEM

Dr. Charles L. Welch

CHANCELLOR OF ARKANSAS STATE UNIVERSITY

Dr. Kelly Dampousse

CHANCELLOR OF ASU-BEEBE

Dr. Jennifer Methvin

CHANCELLOR OF ASU-MOUNTAIN HOME

Dr. Robin Myers

CHANCELLOR OF ASU-NEWPORT

Dr. Johnny Moore

CHANCELLOR OF ASU MID-SOUTH

Dr. Debra West

CHANCELLOR OF ASU THREE RIVERS

Dr. Steve Rook

INTERIM CHANCELLOR OF HENDERSON STATE UNIVERSITY

Dr. Jim Borsig

501 Woodlane Street, Suite 600
Little Rock, AR 72201
(501) 660-1000
www.asusystem.edu

VISION AND MISSION STATEMENTS

Vision: The Arkansas State University System will create better educated citizens prepared for a global and technological society by providing quality undergraduate and graduate education, useful research and dedicated public service.

Mission: *The mission of the Arkansas State University System is to contribute to the educational, cultural, and economic advancement of Arkansas by providing quality general undergraduate education and specialized programs leading to certificate, associate, baccalaureate, masters, professional and doctoral degrees; by encouraging the pursuit of research, scholarly inquiry and creative activity; and by bringing these intellectual resources together to develop the economy of the state and the education of its citizens throughout their lives.*

Each component of the Arkansas State University System will be characterized by:

-A supportive learning environment; personal development, leadership and service opportunities; and facilities, technologies and support necessary to meet the needs of students, faculty and staff;

-Racial, ethnic, gender and cultural diversity in the faculty, staff and student body, supported by practices and programs that embody the ideals of an open, democratic, and global society;

-Instructional technologies, student support services, and on-line and distance education to advance the purposes of teaching and learning;

-A commitment to sharing human, physical, information and other resources among system components, and with state agencies, schools and higher education institutions, to expand and enhance programs and services available to the citizens of Arkansas.

Arkansas State University

Dr. Kelly Damphousse, Chancellor since 2017

Arkansas State University Mission Statement:
Arkansas State University educates leaders, enhances intellectual growth and enriches lives.

Arkansas State University is located in Jonesboro. Jonesboro is the fifth-largest city in the state with a trade, cultural and medical center for a market area of more than a half million people.

HISTORY

Arkansas State University (A-State) was established in 1909 as a state agriculture school. The institution opened as a vocational high school in 1910 and changed to State Agricultural and Mechanical College in 1925. Authority to extend the curriculum, offer senior college work and grant degrees was given to the institution by the legislature in 1925. Senior college work was initiated in 1930, and the first bachelor's degrees were granted in 1931. In 1933, the legislature changed the name of the college to Arkansas State College. Master's degree graduate programs were initiated in 1955. Arkansas State College was granted university status in July 1967, with the first doctoral program added in 1992. The university established a residential location in Mexico, Campus Querétaro, which recorded its first class in 2017.

Since 1909, the institution that evolved into A-State has been served by thirteen presidents/chancellors.

Previous presidents/chancellors and their terms of service were:

- ◆ Mr. V.C. Kays, 1909-43; ◆ Dr. Horace Thompson, 1943-45;
- ◆ Dr. William J. Edens, 1946-51; ◆ Dr. Carl R. Reng, 1951-75;
- ◆ Dr. Ross Pritchard, 1975-78; ◆ Mr. Carl Whillock, 1978-80;
- ◆ Mr. Ray Thornton, 1980-84; ◆ Dr. Eugene Smith, 1984-92;
- ◆ Dr. John N. Mangieri, 1992-94; ◆ Dr. Leslie Wyatt, 1995-2006;
- ◆ Dr. Robert L. Potts, 2006-2010; ◆ Dr. Tim Hudson, 2012-2016

Source: Office of Institutional Effectiveness, Arkansas State University

CHANCELLOR'S CABINET

- Dr. Erika Chudy – University Advancement
- Dr. Len T. Frey – Finance & Administration
- Mr. Terry Mohajir – Intercollegiate Athletics
- Dr. Martha Spack – Dean of Students
- Dr. Thilla Sivakumaran – Global Engagement & Outreach
- Dr. Bill Smith – Communications
- Dr. Martha Spack – Student Affairs
- Dr. Alan Utter – Academic Affairs & Research
- Dr. Lonnie Williams – Diversity & Community Engagement

OFFICE OF ADMISSIONS

P.O. Box 1800
 State University, AR 72467

OFFICE OF INTERNATIONAL PROGRAMS

P.O. Box 2230
 State University, AR 72467

WEBSITE

AState.edu

PROGRAMS OF STUDY

Arkansas State University offers programs at the doctoral, specialist, master's, bachelor's and associate degree levels through the colleges of Agriculture, Neil Griffin College of Business, Education & Behavioral Science, Engineering & Computer Science, Liberal Arts & Communication, Nursing & Health Professions, Sciences & Mathematics, Undergraduate Studies and Graduate School. Additionally, A-State offers degree programs at Beebe, Mountain Home, West Memphis and online.

ACCREDITATION

In order to maintain the highest quality in all its programs, A-State actively seeks evaluation from accreditation visits and program reviews to monitor academic quality. Academic programs are accredited by the regional accrediting agency for all programs. Individual programs are accredited by specialized accrediting agencies for the respective programs.

Accrediting Organizations: Higher Learning Commission; AACSB International; Accreditation Commission for Education in Nursing; American Chemical Society; Accrediting Council on Education in Journalism and Mass Communications; Commission on Accreditation of Allied Health Education Programs; Commission on Accreditation in Physical Therapy Education; Commission on Accreditation of Athletic Training Education; Council for the Accreditation of Counseling and Related Education Programs; Council for the Accreditation of Educator Preparation; Council on Academic Accreditation in Audiology and Speech-Language Pathology; Council on Accreditation of Nurse Anesthesia; Council on Rehabilitation Education; Council on Social Work Education; Engineering Accreditation Commission of the Accreditation Board for Engineering and Technology, Inc.; Joint Review Committee on Education in Diagnostic Medical Sonography; Joint Review Committee on Education in Nuclear Medicine Technology; Joint Review Committee on Education in Radiologic Technology; National Accrediting Agency for Clinical Laboratory Sciences; National Alliance of Concurrent Enrollment; National Association of Schools of Art and Design; National Association of Schools of Music; National Association of Schools of Public Affairs and Administration; National Association of School Psychologists; National Association of Schools of Theatre; National Council for Accreditation of Teacher Education; National League for Nursing Accrediting Commission; Network of International Business Schools.

Arkansas State University-Beebe

Dr. Jennifer Methvin, Chancellor since 2018

Arkansas State University-Beebe Mission Statement:
Transforming lives through quality learning experiences.

HISTORY

As the oldest two-year college in the state, ASU-Beebe has delivered quality, affordable education in Central Arkansas since its founding in 1927. ASU-Beebe has been affiliated with the Arkansas State University System since 1955.

ASU-Beebe has a recognized reputation for providing quality, affordable education and technical training programs to its surrounding communities from its campuses located in Beebe, Heber Springs, Searcy, at Little Rock AFB and On-line. The Beebe campus is located 31 miles north of Little Rock. ASU-Beebe is the third largest community college in the state, and until 2019 was the only Arkansas two-year college with on-campus residence halls. These residence halls are living and learning facilities that provide students from across the state options to attend one of the unique programs only available at ASU-Beebe. ASU-Beebe positively impacts the economy of Central Arkansas, contributing to the regional economy through its operations, capital spending, workforce training and industry partnerships.

CORE VALUES

While strengthening our practice of being student-centered, we will guide our internal conduct as well as our relationships with those we serve by applying the values of integrity, diversity, quality, community and student success.

STRATEGIC GOALS 2018-2023

Strong From The Start: Arkansas State University-Beebe is committed to providing students and employees the resources and support they require to be successful.

Policies, Practices, and Procedures to Be One College (P32B1): While recognizing and valuing the uniqueness and strengths of individual campuses, Arkansas State University-Beebe is committed to a one-college approach to serving students.

ASUBe Connected: Arkansas State University-Beebe is committed to making a positive impact on the quality of life outside the classroom for our students, employees, and the communities we serve.

Source: Office of Institutional Effectiveness, Arkansas State University-Beebe

PROGRAMS OF STUDY

ASU-Beebe's faculty and staff are devoted to academic excellence, and their achievements are reflected through programs which are continually ranked among the top in Arkansas and competitive with similar programs across the nation. In fact, the Aspen Institute has ranked ASU-Beebe in the top 150 community colleges in the nation five times since the ranking began in 2011. Additionally, ASU-Beebe has 17 programs that are fully accredited by national boards or professional associations. ASU-Beebe currently offers associate degrees and certificates in more than 60 programs and is continually working to expand 2 + 2 transfer agreements with four-year institutions to establish clear degree paths for its graduates.

ASU-Beebe offers several unique programs not found at any other institution in the state including the #1 ranked John Deere Agriculture Technology program. Other unique programs include the only veterinary technician program in Arkansas and the only Associate of Fine Arts in Music, Theater, and Graphic Design programs available at any two-year college in the state. ASU-Beebe has a long history as a leader in the state for vocational and technical education. In addition to the associate degrees, the college offers certificates of proficiency and one-year technical certificates in high-wage high-demand fields designed to prepare students to meet the needs of today's rapidly evolving industry and workforce. Its Division of Career Education programs train students on state-of-the-art software and equipment, and partner with area industry professionals to keep students informed on the fast-changing needs of industry. In addition to its credit students, ASU-Beebe provides the communities with adult education, continuing education and workforce development programs.

ACCREDITATION

ASU-Beebe is accredited by the Higher Learning Commission; Association of Technology, Management, and Applied Engineering (ATMAE); Automotive Service Excellence Education Foundation (ASE); National Institute for Metalworking Skills (NIMS); National Alliance of Concurrent Enrollment Partnerships (NACEP); Commission on Accreditation of Allied Health Education Programs CAAHEP); Committee on Accreditation of EMS Professions (COAEMSP); Arkansas Department of Health, Section of EMS and Trauma; HVAC Excellence; National Accrediting Agency for Clinical Laboratory Sciences (NAACLS); American Society of Health-System Pharmacists (ASHP); Accreditation Council for Pharmacy Education (ACPE); Arkansas State Board of Nursing (ARSBN); American Veterinary Medical Association (AVMA); Committee on Veterinary Technician Education and Activities (CVTEA); and the National Center for Construction Education and Research (NCCER).

ARKANSAS STATE UNIVERSITY-BEEBE

P.O. Box 1000
Beebe, AR 72012-1000
(501) 882-3600
www.asub.edu



Arkansas State University-Mountain Home

Dr. Robin Myers, Chancellor since 2012

Arkansas State University-Mountain Home Mission Statement:
The mission of ASUMH is to LEAD through educational opportunities.
Lifelong Learning,
Enhanced Quality of Life,
Academic Accessibility, and
Diverse Experiences

HISTORY

In 1991, the Arkansas General Assembly created technical colleges from the Baxter County Vocational-Technical Center and the North Arkansas Community/Technical College Center in Mountain Home. Mountain Home Technical College was established on July 1, 1991. In 1992, the Mountain Home Technical College agreed to seek affiliation with Arkansas State University to form a sister campus. On July 1, 1993, Mountain Home Technical College became Arkansas State University Mountain Home Technical College.

Arkansas State University-Mountain Home (ASUMH) was established on July 1, 1995 due to the commitment of the residents of Baxter County and the cooperation of the Department of Higher Education and Arkansas State University in Jonesboro.

ASUMH has an open door admissions policy. This policy is designed to enhance access to educational opportunities. Standards of quality are maintained and students are required to remove deficiencies before entering certain programs or courses.

Nestled in the beautiful Ozark Mountains, 156 miles north of Little Rock, the environment at ASUMH encourages free expression, leadership and innovation. Small class size means personal attention and support from instructors. Additionally, the construction of a new campus accommodating 1,200 students offers an even more appealing setting for students to pursue higher education.

PROGRAMS OF STUDY

An Associate of General Studies is offered for those students needing flexibility in the selection of a course of study to meet individual employment and educational needs. The Associate of Arts is designed to meet the General Education requirements for those individuals planning to transfer to a four-year institution in order to complete a bachelor's degree.

Associates of Applied Science are offered in Automotive Systems Repair, Business Administration, Computer Technology and Networking, Criminal Justice, Cybersecurity, Digital Design, Funeral Science, Mechatronics, Paramedic Technology, Programming/Mobile Development, Registered Nursing, and Welding Technology. Also offered is an Associate of General Studies and an Associate of Science in Business, Criminal Justice, Agriculture, Education, and an Associate of Science in Liberal Arts and Science.

Technical Certificates are offered in Accounting/Finance, Automotive Systems Repair, Construction Technology, EMS, Funeral Directing, General Business, Health Professions, Health Sciences, Hospitality, Information Systems Technology, Machining Technology, Mechatronics, Paramedic Technology, Practical Nursing, Pre-Nursing, Pre-Physical Therapist Assistant, Professional Medical Coding, Programming/Mobile Development, Web Development and Welding.

A-State and ASUMH have formed a partnership to offer various bachelor's degree programs through the University Center on the Mountain Home campus. The degrees are offered by building on the existing Associate of Arts degree offered at ASUMH. The Center currently offers bachelor's degrees in Early Childhood Education, Middle-Level Education, Special Education, Nursing, Physical Therapist Assistant, Management and Technology.

ACCREDITATION

ASUMH is accredited by the Higher Learning Commission, the Commission on Accreditation of Applied Health Education Programs, and the Arkansas State Board of Nursing.

ARKANSAS STATE UNIVERSITY-MOUNTAIN HOME

1600 S. College Street
 Mountain Home, AR 72653
 (870) 508-6100
www.asumh.edu

ASU-Mountain Home Campus



Arkansas State University-Newport

Dr. Johnny Moore, Chancellor since 2021

Arkansas State University-Newport Mission Statement:

ASU-Newport provides an accessible, affordable, quality education that transforms the lives of our students, enriches our communities and strengthens the regional economy.

HISTORY

The White River Vocational Technical School opened in Newport, Arkansas, in 1975. In 1991, the Arkansas Legislature passed Act 1244 merging the White River Vocational Technical School with ASU-Beebe. In 1992, it became ASU-Beebe/Newport, and in 1997, it became ASU-Newport. In April 2000, the Arkansas Higher Education Coordinating Board gave approval for ASU-Newport to become a standalone college. In February 2001, the Arkansas Legislature passed Act 297 creating a separate budget appropriation for ASU-Newport effective July 2001. The Higher Learning Commission granted ASU-Newport initial accreditation for stand-alone status for five years in August 2002. In April 2007, ASU-Newport received ten-year accreditation status. In 2008, the ASU Technical Centers in Jonesboro and Marked Tree became campuses of ASU-Newport. The satellite campuses are now known as ASU-Newport at Jonesboro and ASU-Newport at Marked Tree. In 2013, ASU-Newport added instructional locations at the Arkansas Department of Corrections Grimes and McPherson Units. In 2017, ASU-Newport reaffirmed its accreditation status with the HLC.

PROGRAMS OF STUDY

ASU-Newport is committed to providing students the support and resources they need to succeed. From application to graduation, programs and services are designed to assist students (both traditional and nontraditional) in determining and achieving their educational, personal and career goals.

ASU-Newport offers multiple degree options and methods of delivery. Awards include technical certificates, certificates of proficiency, and associate degrees. ASU-Newport continuously works with four-year institutions throughout Arkansas to ensure well-articulated transfer pathways for its students who desire to pursue a bachelor's degree. ASU-Newport also works hand-in-hand with local industry to provide high-demand programming to support a skilled workforce.

It is ASU-Newport's goal to meet every student where they are and provide them with options and services necessary for success. ASU-Newport offers online courses and degrees, facilities Adult Basic Education programming at a variety of locations throughout Northeast Arkansas, has a well-established prison education program, partners with 13 area high schools to provide concurrent credit, and has a secondary center for high school juniors and seniors to earn certificates while completing their diplomas.

ASU-Newport's programs of study include: Advanced Manufacturing, Agriculture Technology, Automotive Service Technology, Business, Certified Nursing Assistant, Collision Repair Technology, Commercial Driver Training (the largest program in the state), Computer Networking Technology, Cosmetology and Aesthetics, Criminal Justice, Diesel Technology, Education, Energy Control Technology, Emergency Medical Technician/Paramedic, General Education, General Technology, High Voltage Lineman Technology, Hospitality Services, Industrial Maintenance, Nursing (PN, LPN to RN, and traditional RN), Patient Care Technician, Phlebotomy, Pre-Health Professions, Surgical Technology and Welding.

ARKANSAS STATE UNIVERSITY-NEWPORT

7648 Victory Blvd.
Newport, AR 72112
(870) 512-7800
www.asun.edu

ACCREDITATION

ASU-Newport is accredited by the Higher Learning Commission (HLC), the Commission on Accreditation of Allied Health Education Programs (CAAHEP), and the National Alliance of Concurrent Enrollment Partnerships (NACEP). In addition, several Boards have oversight and approval of ASU-Newport's programs including the Arkansas State Board of Nursing, the Office of Long Term Care, the Arkansas Department of Health Section of EMS, the Arkansas State Board of Cosmetology, and the Arkansas Department of Health.

ASU-Newport's
Student/Community Center



Arkansas State University Mid-South



Dr. Debra West, Chancellor since 2015

Arkansas State University Mid-South Mission Statement:

The mission of Arkansas State University Mid-South is to enrich lives through high quality educational programming that fosters student success, workforce development, and lifelong learning.

HISTORY

Arkansas State University Mid-South is a public two-year institution serving Crittenden County, Arkansas.

In early 1979, the Arkansas Legislature approved the establishment of Mid-South Vocational Technical School, and the institution selected a 30-acre tract on U.S. Highway 70, just off Airport Road, for construction of the initial facilities.

In 1991, the Arkansas Legislature passed Act 1244, known as the "Two-Year Postsecondary Education Reorganization Act". The legislation focused on converting or upgrading the state's vocational-technical schools into technical colleges or branches of four-year institutions.

Lawmakers selected Mid-South Vocational Technical School for conversion, and upon transfer from the State Board of Education to the State Board of Higher Education on July 1, 1991, the institution became Mid-South Technical College. The governor appointed a seven-member board of trustees who, one year later, determined the community and institution would be best served by converting to a community college. After a campaign to secure the invaluable support of the citizens of Crittenden County, the school moved forward as Mid-South Community College in 1992.

On January 9th, 2015, the Board of Trustees of Mid-South voted unanimously to join the Arkansas State University System in order to expand opportunities for residents of Crittenden County and ensure long-term sustainability for the college. The change became effective July 1, 2015.

ASU Mid-South has enjoyed phenomenal growth and local support. Named one of the Great Colleges to Work For in 2017, 2018, and 2020 by the Chronicle of Higher Education and one of the National Institute for Staff and Organizational Development's Most Promising Places to Work in 2019, and recognizing exceptional commitment to diversity, ASU Mid-South maintains a welcoming and secure environment for both students and staff.

PROGRAMS OF STUDY

ASU Mid-South remains committed to the future of Crittenden County. Located on approximately 84 acres at the intersection of Broadway Street and College Boulevard in West Memphis, the institution remains aggressive and determined in its efforts to meet the current and future employment needs of the region so that students will be prepared for the jobs of today and tomorrow.

Today the college offers for-credit academic and career-technical education, non-credit workforce training, Adult Education/Literacy/ESL, and community education courses including the Associate of Arts degree; Associate of Science, Associate of Applied Science degrees, and a range of Technical Certificates and Certificates of Proficiency. Current programs include: Allied Health (EMT, Nursing Assisting, Medical Assisting, Phlebotomy, and Respiratory Technology); Business; Transportation (Aviation Maintenance, Diesel Technology); Digital Media; Hospitality; Information Technology; Advanced Manufacturing (Machining, Mechatronics, Welding); and Teaching (K-6, 4-8).

In addition to education and training for adult students, ASU Mid-South provides opportunities for high school students to earn concurrent credit, degrees, and certificates in both academic and technical programs of study while still enrolled in high school.

The award-winning Arkansas Delta Training and Education Consortium (ADTEC), established in 2005, allows the college to establish broader connections throughout the region, leveraging the resources of the five community colleges in the Delta region in order to better serve and respond to the economic development needs in Eastern Arkansas.

Thanks in part to funding provided by the State of Arkansas to ADTEC, local students have the option to enroll in baccalaureate and master's degree programs on the Mid-South campus through University Center partnerships with Arkansas State University, the University of Central Arkansas, and the University of Arkansas at Fort Smith. This unique arrangement provides pathways to careers for students for whom time and transportation constraints might be a barrier to furthering their education.

ACCREDITATION

ASU Mid-South is accredited by the Higher Learning Commission. ASU Mid-South's Nursing Assistant Program is certified by the Arkansas Department of Human Services Division of Medical Services Office of Long-Term Care. The Emergency Medical Assistant Program is certified by the Arkansas Department of Health Section of Emergency Medical Services. The Respiratory Care program is accredited by the Commission on Accreditation for Respiratory Care. The Aviation Maintenance Technology program is certified by the Federal Aviation Administration.



Source: Office of Institutional Effectiveness, Arkansas State University Mid-South

Arkansas State University Three Rivers



Dr. Steve Rook, Chancellor since 2016

Arkansas State University Three Rivers Mission Statement:

Arkansas State University Three Rivers is a public, two-year institution of higher education that continually identifies and addresses the changing learning needs of the communities it serves

HISTORY

The College began as Ouachita Vocational Technical School (OVTS) as authorized by the State Board of Education in July 1969 to serve the vocational training needs of a five-county area surrounding Malvern and Hot Spring County. In 1985, OVTS was designated as a high school vocational center as the state attempted to make vocational education accessible to all Arkansas high school students. In 1988, the Arkansas Business Council Foundation recommended transferring postsecondary vocational programs from the State Board of Education to the State Board of Higher Education, expansion of general education programs in vo-tech schools, technical workforce training, and converting existing vo-tech schools into colleges along with support and funding.

The 1991 Arkansas Legislature responded to the recommendations with Act 1244, Two-Year Postsecondary Education Reorganization Act of 1991. OVTS was not in the original legislation; but, at the urging of local business leaders and educators, Senator George Hopkins introduced separate legislation to redesignate OVTS as Ouachita Technical College. The legislation (Act 617 of 1991) was signed into law prior to Act 1244, making Ouachita Technical College Arkansas' first technical college. The College received initial accreditation in 1996 and has continuing accreditation with the Higher Learning Commission.

The Board of Trustees approved a name change in 2010 to communicate the College's broad mission of higher education and service. In July 2011, the name of the College was officially changed to College of the Ouachitas. In February 2019, the college signed a merger agreement with Arkansas State University System, and announced a new name for the institution in September 2019. On January 1, 2020, College of the Ouachitas became Arkansas State University Three Rivers.

PROGRAMS OF STUDY

Programs and services provide associate degree transfer programs that prepare learners to succeed at universities and in the workforce. Academic and support services respond to personal, social, and career planning needs. Customized training and services assist businesses and individuals and aid economic development.

The Associate of Arts and Associate of Science Business are for those planning to transfer to a four-year institution. Associates of Applied Science are offered in Computer Information Systems, Criminal Justice, General Technology, Apprenticeship Trades, Mechatronics, Welding Technology, Accounting, Management, Medical Office Administration, Office Administration, Early Childhood Education, and Registered Nursing. Certificates are offered in Practical Nursing, Electrical Apprenticeship, Plumbing Apprenticeship, and Truck Driver Training.

ARKANSAS STATE UNIVERSITY THREE RIVERS

One College Circle
Malvern, AR 72104
(501) 337-5000
www.asutr.edu

ACCREDITATION

Arkansas State University Three Rivers is accredited by the Higher Learning Commission. Program accreditations include Automotive Service Technology Program, National Automotive Technician Education Foundation and the Concurrent Enrollment Program, National Alliance of Concurrent Enrollment Partnerships. Program approvals include Practical and Registered Nursing Programs, Arkansas State Board of Nursing. The College also has institutional approval for Veterans' educational benefits through the Arkansas State Approving Agency of Veterans.



Henderson State University



Dr. Jim B. Borsig, Interim Chancellor since 2020

Henderson State University Mission Statement:

Henderson provides a learning environment that prepares students for a lifetime of intellectual and personal growth in a global society. We bridge students' academic aspirations to career success by integrating professional studies and the liberal arts.

HISTORY

Of the nine Arkansas public universities, Henderson is one of only two originally established as a four-year, degree-conferring institution and is the second oldest state university. The university has operated for more than a century under six names: Arkadelphia Methodist College (1890-1904), Henderson College (1904-1911), Henderson-Brown College (1911-1929), Henderson State Teachers College (1929-1967), Henderson State College (1967-1975) and Henderson State University (1975-).

The institution was founded on March 24, 1890 as a four-year, coeducational baccalaureate liberal arts college. The college opened on September 3, 1890, with 110 students and 10 faculty members. The name was changed to Henderson College in 1904 to honor Charles Christopher Henderson, a trustee and prominent local businessman. In 1911, the name was amended to Henderson-Brown College to honor Walter William Brown, who was also a trustee. From its founding in 1890 until 1925, the college also operated an academy, which provided instruction for students desiring high school courses and for those not prepared to enter the collegiate curriculum.

Henderson was a sister institution of Hendrix College. In 1929, the educational commission of the Arkansas Methodist Conferences proposed that the two colleges merge in Little Rock. However, through the efforts of Arkadelphia citizens and religious and political leaders of south Arkansas, the institution, then known as Henderson-Brown College, was offered to the State of Arkansas. The Arkansas General Assembly enacted legislation (Act 46) to "establish a standard Teachers College in Arkadelphia," and Henderson became a state university. Henderson State University joined the Arkansas State University System in 2021.

PROGRAMS OF STUDY

Henderson State University offers associate's and bachelor's degrees in areas ranging from the arts and sciences to business, education, nursing and aviation. Graduate degrees include Master of Arts in Teaching, Master of Business Administration, Master of Liberal Arts, Master of Science in Clinical Mental Health Counseling, Developmental Therapy and Sport Administration, Master of Science in Education, Master of Science in Nursing, and Educational Specialist.

HENDERSON STATE UNIVERSITY

1100 Henderson Street
Arkadelphia, AR 71999-0001
(870) 230-5000
www.HSU.edu



ACCREDITATION

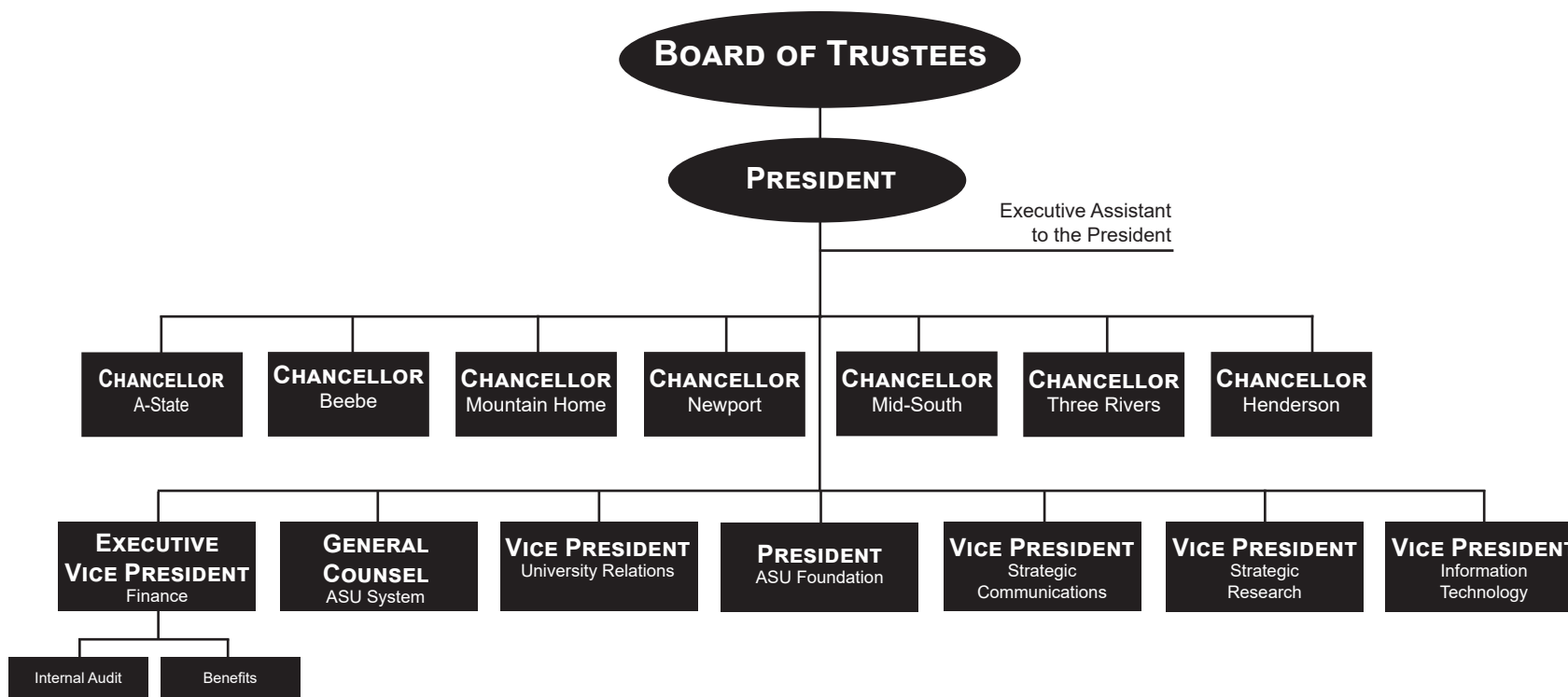
Henderson State University is accredited by the Higher Learning Commission. Program accreditations include Accreditation Council for Education in Nutrition and Dietetics (ACEND), Association to Advance Collegiate Schools of Business (AACSB International), Arkansas State Board of Nursing, Council for the Accreditation of Educator Preparation (CAEP), Council for Accreditation for Counseling and Related Educational Programs (CACREP), Commission on Collegiate Nursing Education (CCNE), Engineering Accreditation Commission of Accreditation Board for Engineering and Technology (ABET), National Association for the Education of Young Children (NAEYC), National Association of Schools of Music (NASM), and National Council for Accreditation of Teacher Education (NCATE).



Arkansas State University System



2020-2021 Organizational Structure



Institutional Classifications

Southern Regional Education Board (SREB) Institutional Categories & Carnegie Classifications

SREB CLASSIFICATIONS*

The SREB system for categorizing postsecondary education institutions is based upon a number of factors relevant to determining resource requirements. Institutions are classified based on size (numbers of degrees or full-time-equivalent enrollment), role (types of degrees), breadth of program offerings (number of program areas in which degrees are granted), and comprehensiveness (distribution of degrees across program areas).

Institutions are assigned to categories for a report year using the previous academic year's data on program completions. To keep the statistical comparison groups relatively stable over time and to assure that institutions change categories only when their measures on a criterion are relatively stable, institutions change categories when they meet the criterion for another category for the third consecutive year.

♦ **Four-Year 3:** Institutions awarding at least 100 master's, education specialist, post-master's, or doctoral degrees with master's, education specialist, and post-master's degrees distributed among at least 10 CIP categories (2-digit classification). (*Arkansas State University*)

♦ **Two-Year 2:** Institutions awarding associate's degrees and offering college transfer courses with FTE enrollment of 2,000 to 4,999; some certificates and diplomas also may be awarded. (*Arkansas State University-Beebe*)

♦ **Two-Year 3:** Institutions awarding associate's degrees and offering college transfer courses with FTE enrollment of less than 2,000; some certificates and diplomas also may be awarded. (*Arkansas State University-Mountain Home, Arkansas State University-Newport, Arkansas State University Mid-South, and Arkansas State University Three Rivers*)

SREB ARKANSAS PEER INSTITUTIONS

♦ **Four-Year 3:**
Arkansas Tech University
University of Central Arkansas

♦ **Two-Year 2:** None

SREB ARKANSAS PEER INSTITUTIONS (CONT.)

♦ **Two-Year 3:**
Arkansas Northeastern College
Black River Technical College
Cossatot Community College of the University of Arkansas
East Arkansas Community College
National Park College
North Arkansas College
Ozarka College
Phillips Community College of the University of Arkansas
South Arkansas Community College
Southeast Arkansas College
Southern Arkansas University Tech
University of Arkansas Community College at Batesville
University of Arkansas Community College at Hope-Texarkana
University of Arkansas Community College at Morrilton
University of Arkansas Community College at Rich Mountain

CARNEGIE CLASSIFICATIONS*

The Carnegie Commission developed a classification of colleges and universities to support its program of research and policy analysis. They are organized around three fundamental questions: what is taught (*Undergraduate & Graduate Instructional Programs*), who are the students (*Enrollment Profile & Undergraduate Profile*), and what is the setting (*Size & Setting*).

♦ **Basic:**
Doctoral Universities: High Research Activity: ASU
Master's Colleges & Universities: Medium Programs: HSU
Associate's Colleges: High Transfer-High Nontraditional: ASU-MS
Associate's Colleges: Mixed Transfer/Career & Technical-Mixed Traditional/Nontraditional: ASU-B, ASU-MH
Associate's Colleges: Mixed Transfer/Career & Technical-High Nontraditional: ASU-N
Associate's Colleges: High Career & Technical-High Nontraditional: ASU-TR

CARNEGIE CLASSIFICATIONS (CONT.)

♦ **Size & Setting:**
Four-Year, Medium, Primarily Residential: : ASU
Four-Year, Small, Highly Residential: : HSU
Two-year, Medium: ASU-B
Two-year, Small: ASU-MH, ASU-N, ASU-MS, ASU-TR

♦ **Enrollment Profile:**
High Undergraduate: ASU
Very High Undergraduate: HSU
Exclusively Undergraduate Two-Year: ASU-B, ASU-MH, ASU-N, ASU-MS, ASU-TR

♦ **Undergraduate Profile:**
Four-Year, Medium Full-Time, Selective, Higher Transfer-In: ASU
Four-year, medium full-time, selective, higher transfer-in: HSU
Two-Year, Mixed Part/Full-Time: ASU-B, ASU-MH, ASU-N
Two-Year, Higher Part-Time: ASU-MS, ASU-TR

♦ **Undergraduate Instructional Program:**
Professions Plus Arts & Sciences, Some Graduate Coexistence: ASU
Balanced Arts & Sciences/Professions, Some Graduate Coexistence: HSU
Associate's Colleges: Mixed Transfer/Career & Technical: ASU-B
Associate's Colleges: High Career & Technical: ASU-MH, ASU-N, ASU-MS, ASU-TR

♦ **Graduate Instructional Program:**
Research Doctoral: Professional-Dominant: ASU
Postbaccalaureate: Education-dominant, with Arts & Sciences: HSU

*The most recent SREB and Carnegie Classifications are based on time-specific snapshots of institutional attributes and behavior based on data from 2017/2018.
Sources: Southern Regional Education Board and Indiana University Center for Postsecondary Research



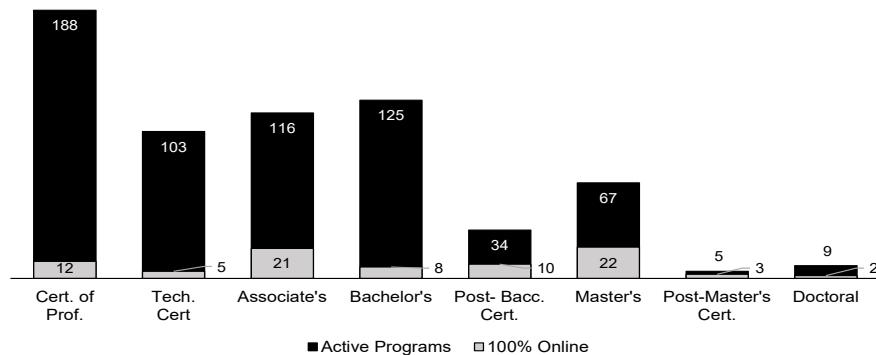
Academic Programs

Academic Programs By Level and Distance Education

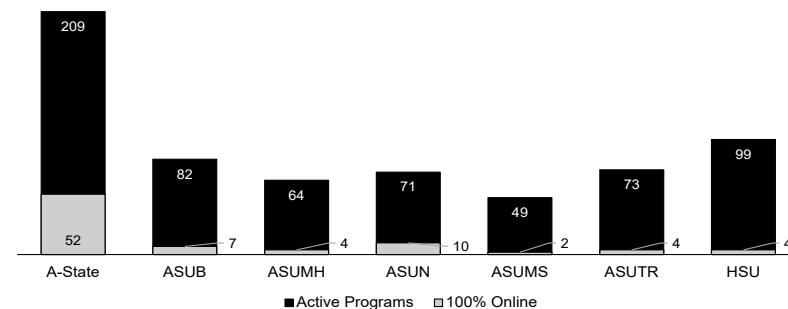


	Cert. of Prof.	Tech. Cert.	Assoc.	Bach.	Post-Bacc.	Mast.	Post-Mast.	Doct.	Total	% of Total
Total Active Programs	188	103	116	125	34	67	5	9	647	
A-State	23	2	15	77	24	55	4	9	209	32.3%
ASU-Beebe	26	29	27						82	12.7%
ASU-Mountain Home	20	22	22						64	9.9%
ASU-Newport	28	23	20						71	11.0%
ASU Mid-South	27	7	15						49	7.6%
ASU Three Rivers	38	20	15						73	11.3%
Henderson State Univ.	26	0	2	48	10	12	1	0	99	15.3%
Offered 100% Online	12	5	21	8	10	22	3	2	83	12.8%
A-State	9	0	2	7	10	20	2	2	52	24.9%
ASU-Beebe	0	2	5						7	8.5%
ASU-Mountain Home	0	0	4						4	6.3%
ASU-Newport	2	2	6						10	14.1%
ASU Mid-South	0	0	2						2	4.1%
ASU Three River	1	1	2						4	5.5%
Henderson State Univ.	0	0	0	1	0	2	1		4	4.0%

ACADEMIC PROGRAMS BY LEVEL AND DISTANCE EDUCATION



ACADEMIC PROGRAMS BY CAMPUS AND DISTANCE EDUCATION



Source: Arkansas State University System Program Inventory, as of January 2021. For a full listing of active degree and certificate programs see www.asusystem.edu/research.

Academic Program Inventory By Level and Broad Program Category



Certificate of Proficiency	A-State	ASUB	ASUMH	ASUN	ASUMS	ASUTR	HSU	Technical Certificate	A-State	ASUB	ASUMH	ASUN	ASUMS	ASUTR	HSU
Agricultural/Animal/Plant/Veterinary Science				1				Agricultural/Animal/Plant/Veterinary Science		1		1			
Area, Ethnic, Cultural, Gender, & Group Studies						1		Business, Management, Marketing	1	3	3	1	2	4	
Business, Management, Marketing		2		1	3	1	4	Computer And Information Science		1	3				1
Communication & Journalism	10						1	Construction Trades			1	1		2	
Computer & Information Sciences		1	4		1	4	1	Culinary, Entertainment, & Personal Services			1	3		2	
Construction Trades			1				11	Education		1		1		1	
Culinary, Entertainment, & Personal Services				2	1	2		Engineering-Related Technologies/Technicians		2	1	2		1	
Education		1		1		1	3	Health Professions	1	5	8	4	1	5	
Engineering-Related Technologies/Technicians		3	1	2	6	5		Homeland Security, Law Enforcement, Firefighting		5		3		2	
English Language & Literature/Letters							2	Liberal Arts & Sciences, General Studies & Humanities	1		1	1	1	1	
Foreign Languages, Literatures, & Linguistics	1							Mechanic & Repair Technologies/Technicians		8	2	5	3		
Health Professions	5	4	7	4	4	3		Precision Production		2	2	1		1	
History							2	Total	2	29	22	23	7	20	
Homeland Security, Law Enforcement, Firefighting		4	1	3		2	2	Associate's	A-State	ASUB	ASUMH	ASUN	ASUMS	ASUTR	HSU
Legal Professions & Studies							1	Agricultural/Animal/Plant/Veterinary Science		2		1			
Liberal Arts & Sciences, General Studies & Humanities	1							Business, Management, Marketing	2	4	3	2	4	4	
Mathematics & Statistics	1						1	Communication & Journalism					1		
Mechanic & Repair Technologies/Technicians		9	2	10	3	2		Communications Technologies/Technicians			1				
Multi/Interdisciplinary Studies							1	Computer & Information Sciences		1	3		1	1	
Philosophy & Religious Studies							1	Construction Trades						1	
Precision Production		4	3	3	8	6		Culinary, Entertainment, & Personal Services			1				
Psychology	1							Education		2	1	1	1	1	
Public Administration & Social Service Professions							2	Engineering-Related Technologies/Technicians	2	2	1	1		1	
Social Sciences	1							Health Professions	5	5	2	4	5	2	2
Transportation & Materials Moving				1		1	3	Homeland Security, Law Enforcement, Firefighting	2	2	2	3		1	
Visual & Performing Arts	1		1		1		1	Liberal Arts & Sciences, General Studies & Humanities	4	3	3	3	1	2	
Total	23	26	20	28	27	38	26	Mechanic & Repair Technologies/Technicians		2	3	3	1		
								Multi/Interdisciplinary Studies		1		2	1	1	
								Natural Resources & Conservation			1				
								Precision Production		2	1			1	
								Visual & Performing Arts		1					
								Total	15	27	22	20	15	15	2

Source: Arkansas State University System Program Inventory, as of January 2021. For a full listing of active degree and certificate programs see www.asusystem.edu/research.

Academic Program Inventory By Level and Broad Program Category

Bachelor's			Master's			Graduate Certificate		
	A-State	HSU		A-State	HSU		A-State	HSU
Agricultural/Animal/Plant/Veterinary Science	4		Agricultural/Animal/Plant/Veterinary Science	1		Business, Management, Marketing	1	
Biological & Biomedical Sciences	2	2	Area, Ethnic, Cultural, Gender, & Group Studies	1		Communication & Journalism	1	
Business, Management, Marketing	8	2	Biological & Biomedical Sciences	4		Computer & Information Sciences	3	
Communication & Journalism	5	2	Business, Management, Marketing	2	1	Education	13	6
Computer & Information Sciences	3	1	Communication & Journalism	5		Engineering-Related Technologies/Technicians	1	
Education	13	9	Computer & Information Sciences	1		English Language & Literature/Letters		1
Engineering	3	1	Education	18	6	Health Professions	6	2
Engineering-Related Technologies/Technicians	2		Engineering	1		History	1	1
English Language & Literature/Letters	1	1	Engineering-Related Technologies/Technicians	1		Mathematics & Statistics	1	
Family & Consumer Sciences/Human Sciences		2	English Language & Literature/Letters	1		Psychology	1	1
Foreign Languages, Literatures, & Linguistics	1	1	Family & Consumer Sciences/Human Sciences	1		Total	28	11
Health Professions	6	6	Health Professions	4	2	Doctoral		
History	1	1	History	1		A-State		
Homeland Security, Law Enforcement, Firefighting	1	2	Homeland Security, Law Enforcement, Firefighting	2		Area, Ethnic, Cultural, Gender, & Group Studies	1	
Liberal Arts & Sciences, General Studies & Humanities	2	1	Liberal Arts & Sciences, General Studies & Humanities		1	Biological & Biomedical Sciences	1	
Mathematics & Statistics	1	1	Mathematics & Statistics	2		Education	2	
Multi/Interdisciplinary Studies	1		Natural Resources & Conservation	1		Health Professions	4	
Natural Resources & Conservation	3		Parks, Recreation, Leisure, Fitness, & Kinesiology	2	1	Natural Resources & Conservation	1	
Parks, Recreation, Leisure, Fitness, & Kinesiology	3	1	Physical Sciences	1		Total	9	
Philosophy & Religious Studies	1		Psychology	1	1			
Physical Sciences	3	2	Public Administration & Social Service Professions	2				
Psychology	2	2	Social Sciences	2				
Public Administration & Social Service Professions	1	2	Visual & Performing Arts	1				
Social Sciences	4	3	Total	55	12			
Transportation & Materials Moving		1						
Visual & Performing Arts	6	5						
Total	77	48						

Source: Arkansas State University System Program Inventory, as of January 2021. For a full listing of active degree and certificate programs see www.asusystem.edu/research.



Degrees & Certificates Awarded

Degrees & Certificates Awarded Summary



By Fiscal Year

Degrees & Certificates Awarded - ASU System										
	2016	2017	2018	2019	2020	2016	2017	2018	2019	2020
Total Degrees/Certificates Awarded	8,891	9,487	9,552	10,177	9,684					
Certificate of Proficiency	1,377	1,701	1,713	1,741	1,466	15.5%	17.9%	17.9%	17.1%	15.1%
Technical Certificate	1,336	1,183	1,128	1,306	1,234	15.0%	12.5%	11.8%	12.8%	12.7%
Associate	2,032	2,024	1,887	1,984	2,075	22.9%	21.3%	19.8%	19.5%	21.4%
Bachelor's	2,217	2,309	2,346	2,354	2,198	24.9%	24.3%	24.6%	23.1%	22.7%
Graduate Certificate	54	55	102	150	159	0.6%	0.6%	1.1%	1.5%	1.6%
Master's	1,485	1,725	1,829	2,047	1,924	16.7%	18.2%	19.1%	20.1%	19.9%
Specialist	339	427	496	530	537	3.8%	4.5%	5.2%	5.2%	5.5%
Doctoral	51	63	51	65	91	0.6%	0.7%	0.5%	0.6%	0.9%

HISTORICAL DEGREES & CERTIFICATES AWARDED

Campuses	2016	2017	2018	2019	2020
Certificates Awarded by Campus					
A-State	23	31	99	125	118
Beebe	1,019	936	871	851	764
Mountain Home	330	420	372	336	286
Newport	571	631	775	874	669
Mid-South	316	413	307	439	384
Three Rivers	476	479	502	529	530
Henderson	32	29	17	43	108
Total Certificates	2,767	2,939	2,943	3,197	2,859
Degrees Awarded by Campus					
A-State	3,964	4,404	4,647	4,854	4,632
Beebe	755	674	582	767	797
Mountain Home	241	243	227	185	219
Newport	236	238	228	242	280
Mid-South	127	143	136	128	95
Three Rivers	159	153	136	114	124
Henderson	642	693	670	690	678
Total Degrees	6,124	6,548	6,609	6,980	6,825
Total Awards	8,891	9,487	9,552	10,177	9,684

DEGREES & CERTIFICATES AWARDED BY ETHNICITY

ASU System - Fiscal Year 2020

Ethnicity	Cert. of Prof.	Tech. Cert.	Assoc.	Bach.	Grad. Cert.	Master's	Spec.	Doct.	Total
African American	305	161	250	278	11	232	84	11	1,332
American Indian	7	5	12	6	1	11	3	0	45
Asian American	12	7	11	26	2	10	2	0	70
Hispanic American	60	65	111	64	7	53	6	0	366
Hawaiian/Pacific Islander	7	6	4	1	0	0	0	0	18
White American	1,019	940	1,591	1,677	132	1,453	421	76	7,309
Two or More Races	37	30	58	39	1	30	5	1	201
Ethnicity Unknown	5	7	15	17	3	49	15	0	111
International	14	13	23	90	2	86	1	3	232

Source: NCES IPEDS (ASUTR will revise IPEDS completions in 2020-21 to reflect 1 additional associate's degree awarded.)



Enrollment

System Enrollment Summary



Academic Year 2019 - 2020

Student Enrollment									
	Campuses							Total	% of Total
	A-State*	ASUB	ASUMH	ASUN	ASUMS	ASUTR	HSU		
Total Headcount	18,762	4,427	1,817	4,680	1,705	1,512	4,562	37,465	
Undergraduate**	10,627	4,427	1,817	4,680	1,705	1,512	3,809	28,577	76.3%
Graduate	8,135						753	8,888	23.7%
Full-Time Equivalent	12,522	2,413	910	1,824	757	677	3,459	22,562	60.2%
Semester Credit Hours	344,057	72,387	27,290	54,732	22,710	20,314	101,332	642,822	
Student Demographics									
	Campuses							Total	% of Total
	A-State	ASUB	ASUMH	ASUN	ASUMS	ASUTR	HSU		
Headcount by Gender									
Male	6,732	1,746	692	1,884	648	615	1,797	14,114	37.7%
Female	12,030	2,681	1,125	2,796	1,057	897	2,765	23,351	62.3%
International	739	15	0	84	12	0	42	892	2.4%
Headcount by Ethnicity***									
American Indian or Alaskan Native	77	28	4	26	13	8	18	174	0.5%
Asian	157	66	10	39	23	6	62	363	1.0%
Black or African American	2,665	299	5	642	943	294	815	5,663	15.1%
Hispanic or Latino	617	219	80	170	65	92	231	1,474	3.9%
Native Hawaiian or Pacific Islander	13	10	4	1	0	1	24	53	0.1%
White	13,824	3,602	1,622	3,393	592	1,044	3,073	27,150	72.5%
Two or More Races	367	105	70	81	56	63	220	962	2.6%
Unknown	303	83	22	244	1	4	77	734	2.0%

* A-State does not include Campus Querétaro, Mexico.

** Undergraduate includes high school students enrolled in college courses.

*** Headcount by Ethnicity excludes International.

Source: NCES IPEDS

System Enrollment Summary



Fall 2020

Student Enrollment									
	Campuses							Total	% of Total
	A-State	ASUB	ASUMH	ASUN	ASUMS	ASUTR	HSU		
Total Headcount	13,843	2,982	1,271	1,941	1,203	1,243	3,163	25,646	
Full-Time*	7,175	1,550	519	767	275	292	2,483	13,061	50.9%
Part-Time	6,668	1,432	752	1,174	928	951	680	12,585	49.1%
High School	731	741	373	441	567	764	21	3,638	14.2%
Undergraduate	8,747	2,551	981	1,500	668	634	15,368	16,853	65.7%
Graduate	4,428	0	0	0	0	0	4,428	5,155	20.1%
Full-Time Equivalent	9,535	2,017	769	1,182	608	542	2,812	17,463	68.1%
Semester Credit Hours	137,265	33,746	12,500	21,547	10,044	8,690	41,320	255,333	
Student Demographics									
	Campuses							Total	% of Total
	A-State	ASUB	ASUMH	ASUN	ASUMS	ASUTR	HSU		
Headcount by Age									
Under 25	8,543	2,413	885	1,393	953	969	2,476	17,632	68.8%
25 & Older	5,300	725	386	548	250	274	687	8,014	31.2%
Age Unknown	0	0	0	0	0	0	0	0	0.0%
Headcount by Gender									
Male	5,082	1,107	503	680	466	483	1,297	9,618	37.5%
Female	8,747	1,858	768	1,257	737	737	1,866	15,993	62.4%
Unknown	14	17	0	4	0	0	0	35	0.1%
Headcount by Ethnicity									
African American	1,809	182	5	284	676	165	603	3,724	14.5%
White American	9,621	2,385	1,164	1,427	419	942	2,039	17,997	70.2%
Other Ethnicity**	2,413	415	102	230	108	136	521	3,925	15.3%

* A "full-time" undergraduate student load is 12 or more semester credits, and a "full-time" graduate student load is 9 or more semester credits.

** "Other" includes students reported as American Indian/Alaskan Native, Asian American, Hispanic American, Native Hawaiian/Pacific Islander, those reporting two or more races, International and those whose ethnicity is unknown.

Source: Office of Strategic Research, ASU System

Total Enrollment

A-State Total* - Fall 2016 to Fall 2020

Total Enrollment						Percentage of Total Enrollment				
	2016	2017	2018	2019	2020	2016	2017	2018	2019	2020
Total Headcount	14,085	14,144	14,058	13,891	13,843					
High School	620	694	692	716	731	4.4%	4.9%	4.9%	5.2%	5.3%
Undergraduate	9,219	9,124	9,007	8,747	8,492	65.5%	64.5%	64.1%	63.0%	61.3%
Graduate	3,818	4,326	4,359	4,428	4,620	30.1%	30.6%	31.0%	31.9%	33.4%
Full-Time**	8,061	7,807	7,797	7,599	7,175	52.2%	55.2%	55.5%	54.7%	51.8%
Part-Time	6,024	6,337	6,261	6,292	6,668	47.8%	44.8%	44.5%	45.3%	48.2%
Full-Time Equivalent	10,107	9,996	10,011	9,840	9,536	71.8%	70.7%	71.2%	70.8%	68.9%
Student Demographics						Percentage of Total Enrollment				
	2016	2017	2018	2019	2020	2016	2017	2018	2019	2020
Headcount by Age										
Under 18	656	688	729	743	758	4.7%	4.9%	5.2%	5.3%	5.5%
18 to 19	2,756	2,835	2,973	2,925	2,802	19.6%	20.0%	21.1%	21.1%	20.2%
20 to 21	3,055	2,925	2,853	2,907	2,910	21.7%	20.7%	20.3%	20.9%	21.0%
22 to 24	2,160	2,236	2,194	2,122	2,073	15.3%	15.8%	15.6%	15.3%	15.0%
25 to 29	1,866	1,808	1,776	1,645	1,658	13.2%	12.8%	12.6%	11.8%	12.0%
30 to 44	2,718	2,747	2,676	2,696	2,730	19.3%	19.4%	19.0%	19.4%	19.7%
45 to 64	849	876	831	828	883	6.0%	6.2%	5.9%	6.0%	6.4%
65 & Over	25	29	24	24	29	0.2%	0.2%	0.2%	0.2%	0.2%
Age Unknown	0	0	2	1	0	0.0%	0.0%	0.0%	0.0%	0.0%
Headcount by Gender										
Male	5,625	5,454	5,371	5,316	5,082	39.9%	38.6%	38.2%	38.3%	36.7%
Female	8,460	8,690	8,687	8,575	8,747	60.1%	61.4%	61.8%	61.7%	63.2%
Unknown	0	0	0	0	14	0.0%	0.0%	0.0%	0.0%	0.1%
Headcount by Ethnicity***										
African American	1,836	1,831	1,737	1,725	1,809	13.0%	12.9%	12.4%	12.4%	13.1%
White American	10,448	10,382	10,282	9,957	9,621	74.2%	73.4%	73.1%	71.7%	69.5%
Other Ethnicity	1,801	1,931	2,039	2,209	2,413	12.8%	13.7%	14.5%	15.9%	17.4%

* A-State enrollment includes students enrolled at Campus Querétaro, Mexico (Fall 2017 - 214, Fall 2018 - 349, Fall 2019 - 535)

** A "full-time" undergraduate student load is 12 or more semester credits.

*** "Other" includes students reported as American Indian/Alaskan Native, Asian American, Hispanic American, Hawaiian Native/Pacific Islander, those reporting two or more races, International and those whose ethnicity is unknown.

Source: Office of Strategic Research, ASU System

Total Enrollment

A-State (Excludes Campus Querétaro*) - Fall 2016 to Fall 2020

A-State Domestic Enrollment						Percentage of Total Enrollment				
	2016	2017	2018	2019	2020	2016	2017	2018	2019	2020
Total Headcount	14,085	13,930	13,709	13,356	13,106					
High School	620	694	692	715	731	4.4%	5.0%	5.0%	5.4%	5.6%
Undergraduate	9,219	8,910	8,658	8,213	7,755	65.5%	64.0%	63.2%	61.5%	59.2%
Graduate	4,246	4,326	4,359	4,428	4,620	30.1%	31.1%	31.8%	33.2%	35.3%
Full-Time**	8,031	8,061	7,597	7,456	7,089	52.6%	52.2%	55.2%	55.5%	54.7%
Part-Time	5,379	6,024	6,333	6,253	6,267	47.4%	47.8%	44.8%	44.5%	45.3%
Full-Time Equivalent	0,107	9,772	9,656	9,313	8,806	71.8%	70.7%	71.2%	70.8%	67.2%

Student Demographics						Percentage of Total Enrollment				
	2016	2017	2018	2019	2020	2016	2017	2018	2019	2020
Headcount by Age Categories										
Under 18	671	709	715	729	727	4.8%	5.1%	5.2%	5.5%	5.5%
18 to 19	2,775	2,688	2,761	2,630	2,461	19.7%	19.3%	20.1%	19.7%	18.8%
20 to 21	3,035	2,873	2,766	2,732	2,647	21.5%	20.6%	20.2%	20.5%	20.2%
22 to 24	2,155	2,207	2,166	2,079	1,978	15.3%	15.8%	15.8%	15.6%	15.1%
25 to 29	1,861	1,809	1,772	1,638	1,651	13.2%	13.0%	12.9%	12.3%	12.6%
30 to 39	2,058	2,068	2,025	2,035	2,024	14.6%	14.8%	14.8%	15.2%	15.4%
40 to 64	1,505	1,547	1,480	1,489	1,589	10.7%	11.1%	10.8%	11.1%	12.1%
65 & Over	25	29	24	24	29	0.2%	0.2%	0.2%	0.2%	0.2%
Age Unknown	0	0	0	0	0	0.0%	0.0%	0.0%	0.0%	0.0%
Headcount by Gender										
Male	5,625	5,337	5,175	5,028	4,698	39.9%	38.3%	37.7%	37.6%	35.8%
Female	8,460	8,593	8,534	8,328	8,399	60.1%	61.7%	62.3%	62.4%	64.1%
Unknown	0	0	0	0	9	0.0%	0.0%	0.0%	0.0%	0.1%
Headcount by Ethnicity***										
African American	1,836	1,831	1,737	1,725	1,808	13.0%	13.1%	12.7%	12.9%	13.8%
White American	10,448	10,381	10,281	9,956	9,619	74.2%	74.5%	75.0%	74.5%	73.4%
Other Ethnicity	1,801	1,718	1,691	1,675	1,679	12.8%	12.3%	12.3%	12.5%	12.8%

* A-State enrollment does not include Campus Querétaro, Mexico.

** A "full-time" undergraduate student load is 12 or more semester credits.

*** "Other" includes students reported as American Indian/Alaskan Native, Asian American, Hispanic American, Hawaiian Native/Pacific Islander, those reporting two or more races, International and those whose ethnicity is unknown.

Source: Office of Strategic Research, ASU System

Total Enrollment

Arkansas State University Campus Querétaro* - Fall 2017 to Fall 2020

Campus Querétaro Enrollment					Percentage of Total Enrollment			
	2017	2018	2019	2020	2017	2018	2019	2020
Total Headcount	214	349	535	737				
Undergraduate	214	349	535	737	100.0%	100.0%	100.0%	100.0%
Full-Time**	210	341	510	710	98.1%	97.7%	95.3%	96.3%
Part-Time	4	8	25	27	1.9%	2.3%	4.7%	3.7%
Full-Time Equivalent	214	349	526	728	100.0%	100.0%	98.3%	98.8%

Student Demographics					Percentage of Total Enrollment			
	2017	2018	2019	2020	2017	2018	2019	2020
Headcount by Age								
Under 18	7	19	21	31	3.3%	5.4%	3.9%	4.2%
18 to 19	164	219	300	341	76.6%	62.8%	56.1%	46.3%
20 to 21	34	94	173	263	15.8%	26.9%	32.3%	35.7%
22 to 24	8	12	36	95	3.7%	3.4%	6.7%	12.9%
25 to 29	0	3	4	7	0.0%	0.9%	0.7%	0.9%
30 to 44	1	0	0	0	0.5%	0.0%	0.0%	0.0%
45 to 64	0	0	0	0	0.0%	0.0%	0.0%	0.0%
65 & Over	0	0	0	0	0.0%	0.0%	0.0%	0.0%
Age Unknown	0	2	1	0	0.0%	0.6%	0.2%	0.0%
Headcount by Gender								
Male	117	196	288	384	54.7%	56.2%	53.8%	52.1%
Female	97	153	247	348	45.3%	43.8%	46.2%	47.2%
Unknown	0	0	0	5	0.0%	0.0%	0.0%	0.7%
Headcount by Ethnicity***								
African American	0	0	0	1	0.0%	0.0%	0.0%	0.1%
White American	1	1	1	2	0.5%	0.3%	0.2%	0.3%
Other Ethnicity	213	348	534	734	99.5%	99.7%	99.8%	99.6%

* A-State enrollment represents Campus Querétaro, Mexico.

** A "full-time" undergraduate student load is 12 or more semester credits.

*** "Other" includes students reported as American Indian/Alaskan Native, Asian American, Hispanic American, Hawaiian Native/Pacific Islander, those reporting two or more races, International and those whose ethnicity is unknown.

Source: Office of Strategic Research, ASU System

Total Enrollment

ASU-Beebe - Fall 2016 to Fall 2020

	Total Enrollment					Percentage of Total Enrollment				
	2016	2017	2018	2019	2020	2016	2017	2018	2019	2020
Total Headcount	3,989	3,739	3,446	3,317	2,982					
High School	884	831	777	767	741	22.2%	22.2%	22.5%	23.1%	24.8%
Undergraduate	3,105	2,908	2,669	2,550	2,241	77.8%	77.8%	77.5%	76.9%	75.2%
Full-Time*	2,082	1,867	1,779	1,731	1,550	52.2%	49.9%	51.6%	52.2%	52.0%
Part-Time	1,907	1,872	1,667	1,586	1,432	47.8%	50.1%	48.4%	47.8%	48.0%
Full-Time Equivalent	2,678	2,472	2,338	2,250	2,016	67.1%	66.1%	67.8%	67.8%	67.6%

	Student Demographics					Percentage of Total Enrollment				
	2016	2017	2018	2019	2020	2016	2017	2018	2019	2020
Headcount by Age										
Under 18	829	772	741	729	724	20.8%	20.6%	21.5%	22.0%	24.3%
18 to 19	1,240	1,239	1,149	1,150	1,021	31.1%	33.1%	33.3%	34.7%	34.2%
20 to 21	584	519	481	421	395	14.6%	13.9%	14.0%	12.7%	13.2%
22 to 24	370	346	317	292	273	9.3%	9.3%	9.2%	8.8%	9.2%
25 to 29	362	328	296	280	225	9.1%	8.8%	8.6%	8.4%	7.5%
30 to 39	324	289	253	247	195	8.1%	7.7%	7.3%	7.4%	6.5%
40 to 64	249	215	186	182	141	6.2%	5.8%	5.4%	5.5%	4.7%
65 & Over	31	31	23	16	8	0.8%	0.8%	0.7%	0.5%	0.3%
Age Unknown	0	0	0	0	0	0.0%	0.0%	0.0%	0.0%	0.0%
Headcount by Gender										
Male	1,721	1,522	1,373	1,320	1,107	43.1%	40.7%	39.8%	39.8%	37.1%
Female	2,268	2,217	2,064	1,993	1,858	56.9%	59.3%	59.9%	60.1%	62.3%
Unknown	0	0	9	4	17	0.0%	0.0%	0.3%	0.1%	0.6%
Headcount by Ethnicity**										
African American	243	230	237	218	182	6.1%	6.2%	6.9%	6.6%	6.1%
White American	3,280	2,978	2,784	2,716	2,385	82.2%	79.6%	80.8%	81.9%	80.0%
Other Ethnicity	466	531	425	383	415	11.7%	14.2%	12.3%	11.5%	13.9%

* A "full-time" undergraduate student load is 12 or more semester credits.

** "Other" includes students reported as American Indian/Alaskan Native, Asian American, Hispanic American, Hawaiian Native/Pacific Islander, those reporting two or more races, International and those whose ethnicity is unknown.

Source: Office of Strategic Research, ASU System

Total Enrollment

ASU-Mountain Home - Fall 2016 to Fall 2020

Total Enrollment						Percentage of Total Enrollment				
	2016	2017	2018	2019	2020	2016	2017	2018	2019	2020
Total Headcount	1,367	1,429	1,345	1,324	1,271					
High School	163	387	295	344	373	11.9%	27.1%	21.9%	26.0%	29.3%
Undergraduate	1,204	1,042	1,050	980	898	88.1%	72.9%	78.1%	74.0%	70.7%
Full-Time*	714	632	605	583	519	52.2%	44.2%	45.0%	44.0%	40.8%
Part-Time	653	797	740	741	752	47.8%	55.8%	55.0%	56.0%	59.2%
Full-Time Equivalent	953	905	854	833	769	69.7%	62.8%	63.5%	62.9%	60.5%

Student Demographics						Percentage of Total Enrollment				
	2016	2017	2018	2019	2020	2016	2017	2018	2019	2020
Headcount by Age										
Under 18	152	348	291	325	360	11.1%	24.4%	21.6%	24.5%	28.3%
18 to 19	336	345	348	324	297	24.6%	24.1%	25.9%	24.5%	23.4%
20 to 21	149	142	129	123	114	10.9%	9.9%	9.6%	9.3%	9.0%
22 to 24	137	122	120	112	114	10.0%	8.5%	8.9%	8.5%	9.0%
25 to 29	177	158	160	130	117	12.9%	11.1%	11.9%	9.8%	9.2%
30 to 39	201	147	158	175	145	14.7%	10.3%	11.7%	13.2%	11.4%
40 to 64	203	161	133	125	115	14.9%	11.3%	9.9%	9.4%	9.0%
65 & Over	12	6	6	10	9	0.9%	0.4%	0.4%	0.8%	0.7%
Age Unknown	0	0	0	0	0	0.0%	0.0%	0.0%	0.0%	0.0%
Headcount by Gender										
Male	577	601	542	517	503	42.2%	42.1%	40.3%	39.0%	39.6%
Female	790	828	803	806	768	57.8%	57.9%	59.7%	60.9%	60.4%
Unknown	0	0	0	1	0	0.0%	0.0%	0.0%	0.1%	0.0%
Headcount by Ethnicity**										
African American	8	8	8	5	5	0.6%	0.6%	0.6%	0.4%	0.4%
White American	1,252	1,125	1,137	1,167	1,164	91.6%	78.7%	84.5%	88.1%	91.6%
Other Ethnicity	107	296	200	152	102	7.8%	20.7%	14.9%	11.5%	8.0%

* A "full-time" undergraduate student load is 12 or more semester credits.

** "Other" includes students reported as American Indian/Alaskan Native, Asian American, Hispanic American, Hawaiian Native/Pacific Islander, those reporting two or more races, International and those whose ethnicity is unknown.

Source: Office of Strategic Research, ASU System

Total Enrollment

ASU-Newport - Fall 2016 to Fall 2020

	Total Enrollment					Percentage of Total Enrollment				
	2016	2017	2018	2019	2020	2016	2017	2018	2019	2020
Total Headcount	2,715	2,386	2,270	2,247	1,941					
High School	822	559	473	477	441	30.3%	23.4%	20.8%	21.2%	22.7%
Undergraduate	1,893	1,827	1,797	1,770	1,500	69.7%	76.6%	79.2%	78.8%	77.3%
Full-Time*	1,058	1,095	1,039	967	767	38.9%	39.2%	45.9%	45.8%	42.4%
Part-Time	1,657	1,291	1,231	1,280	1,174	61.1%	60.8%	54.1%	54.2%	57.6%
Full-Time Equivalent	1,567	1,531	1,465	1,430	1,184	57.7%	64.2%	64.5%	63.6%	61.0%

	Student Demographics					Percentage of Total Enrollment				
	2016	2017	2018	2019	2020	2016	2017	2018	2019	2020
Headcount by Age										
Under 18	772	530	457	492	425	28.4%	22.2%	20.1%	21.9%	21.9%
18 to 19	577	573	530	487	419	21.3%	24.0%	23.3%	21.7%	21.6%
20 to 21	411	392	360	349	301	15.1%	16.4%	15.9%	15.5%	15.5%
22 to 24	267	245	300	288	248	9.8%	10.3%	13.2%	12.8%	12.8%
25 to 29	258	228	217	226	210	9.5%	9.6%	9.6%	10.1%	10.8%
30 to 39	284	241	234	245	217	10.5%	10.1%	10.3%	10.9%	11.2%
40 to 64	142	170	164	155	120	5.2%	7.1%	7.2%	6.9%	6.2%
65 & Over	4	2	1	5	1	0.1%	0.1%	0.0%	0.2%	0.1%
Age Unknown	0	5	7	0	0	0.0%	0.2%	0.3%	0.0%	0.0%
Headcount by Gender										
Male	1,079	960	901	839	680	39.7%	40.2%	39.7%	37.3%	35.0%
Female	1,636	1,426	1,367	1,402	1,257	60.3%	59.8%	60.2%	62.4%	64.8%
Unknown	0	0	2	6	4	0.0%	0.0%	0.1%	0.3%	0.2%
Headcount by Ethnicity										
African American	416	355	318	325	284	15.3%	14.9%	14.0%	14.5%	14.6%
White American	1,962	1,792	1,720	1,635	1,427	72.3%	75.1%	75.8%	72.8%	73.5%
Other Ethnicity	337	239	232	287	230	12.4%	10.0%	10.2%	12.8%	11.8%

* A "full-time" undergraduate student load is 12 or more semester credits.

** "Other" includes students reported as American Indian/Alaskan Native, Asian American, Hispanic American, Hawaiian Native/Pacific Islander, those reporting two or more races, International and those whose ethnicity is unknown.

Source: Office of Strategic Research, ASU System

Total Enrollment



ASU Mid-South - Fall 2016 to Fall 2020

	Total Enrollment					Percentage of Total Enrollment				
	2016	2017	2018	2019	2020	2016	2017	2018	2019	2020
Total Headcount	1,836	1,561	1,423	1,329	1,203					
High School	780	627	657	662	567	42.5%	40.2%	46.2%	49.8%	47.1%
Undergraduate	1,056	934	766	667	636	57.5%	59.8%	53.8%	50.2%	52.9%
Full-Time*	530	437	356	295	275	28.9%	28.0%	25.0%	22.2%	22.9%
Part-Time	1,306	1,124	1,067	1,034	928	71.1%	72.0%	75.0%	77.8%	77.1%
Full-Time Equivalent	993	841	739	670	607	54.1%	53.9%	51.9%	50.3%	50.5%

	Student Demographics					Percentage of Total Enrollment				
	2016	2017	2018	2019	2020	2016	2017	2018	2019	2020
Headcount by Age										
Under 18	745	594	630	637	551	40.6%	38.1%	44.3%	47.9%	45.8%
18 to 19	323	300	258	230	214	17.6%	19.2%	18.1%	17.3%	17.8%
20 to 21	190	176	114	94	106	10.3%	11.3%	8.0%	7.1%	8.8%
22 to 24	120	122	102	87	82	6.5%	7.8%	7.2%	6.5%	6.8%
25 to 29	155	115	97	91	89	8.4%	7.4%	6.8%	6.8%	7.4%
30 to 39	179	156	124	101	97	9.7%	10.0%	8.7%	7.6%	8.1%
40 to 64	116	90	93	85	63	6.3%	5.8%	6.5%	6.4%	5.2%
65 & Over	8	8	5	4	1	0.4%	0.5%	0.4%	0.3%	0.1%
Age Unknown	0	0	0	0	0	0.0%	0.0%	0.0%	0.0%	0.0%
Headcount by Gender										
Male	763	627	528	516	466	41.6%	40.2%	37.1%	38.8%	38.7%
Female	1,073	934	895	813	737	58.4%	59.8%	62.9%	61.2%	61.3%
Gender Unknown	0	0	0	0	0	0.0%	0.0%	0.0%	0.0%	0.0%
Headcount by Ethnicity**										
African American	1,040	888	790	745	676	56.6%	56.9%	55.5%	56.1%	56.2%
White American	623	506	503	449	419	33.9%	32.4%	35.3%	33.8%	34.8%
Other Ethnicity	173	167	130	135	108	9.4%	10.7%	9.1%	10.2%	9.0%

* A "full-time" undergraduate student load is 12 or more semester credits.

** "Other" includes students reported as American Indian/Alaskan Native, Asian American, Hispanic American, Hawaiian Native/Pacific Islander, those reporting two or more races, International and those whose ethnicity is unknown.
Source: Office of Strategic Research, ASU System

Total Enrollment



ASU Three Rivers - Fall 2016 to Fall 2020

	Total Enrollment					Percentage of Total Enrollment				
	2016	2017	2018	2019	2020	2016	2017	2018	2019	2020
Total Headcount	1,328	1,272	1,259	1,150	1,243					
High School	542	553	591	517	764	40.8%	43.5%	46.9%	45.0%	61.5%
Undergraduate	786	719	668	633	479	59.2%	56.5%	53.1%	55.0%	38.5%
Full-Time*	439	384	339	358	292	33.1%	30.2%	26.9%	31.1%	23.5%
Part-Time	889	888	920	792	951	66.9%	69.8%	73.1%	68.9%	76.5%
Full-Time Equivalent	715	659	613	579	541	53.8%	51.8%	48.8%	50.3%	43.5%

	Student Demographics					Percentage of Total Enrollment				
	2016	2017	2018	2019	2020	2016	2017	2018	2019	2020
Headcount by Age										
Under 18	501	497	548	465	717	37.7%	39.1%	43.5%	40.4%	57.7%
18 to 19	238	256	184	168	138	17.9%	20.1%	14.6%	14.6%	11.1%
20 to 21	110	88	103	113	60	8.3%	6.9%	8.2%	9.8%	4.8%
22 to 24	93	75	96	83	54	7.0%	5.9%	7.6%	7.2%	4.3%
25 to 29	151	131	133	99	84	11.4%	10.3%	10.6%	8.6%	6.8%
30 to 44	149	148	139	137	126	11.2%	11.6%	11.0%	11.9%	10.1%
45 to 64	85	75	56	85	64	6.4%	5.9%	4.4%	7.4%	5.1%
65 & Over	1	2	0	0	0	0.1%	0.2%	0.0%	0.0%	0.0%
Age Unknown	0	0	8	0	0	0.0%	0.0%	0.6%	0.0%	0.0%
Headcount by Gender										
Male	570	559	552	520	483	42.9%	43.9%	43.8%	45.2%	38.9%
Female	758	713	707	630	760	57.1%	56.1%	56.2%	54.8%	61.1%
Gender Unknown	0	0	0	0	0	0.0%	0.0%	0.0%	0.0%	0.0%
Headcount by Ethnicity**										
African American	180	177	159	175	165	13.6%	13.9%	12.6%	15.2%	13.3%
White American	1,020	960	958	831	942	76.8%	75.5%	76.1%	72.3%	75.8%
Other Ethnicity	128	135	142	144	136	9.6%	10.6%	11.3%	12.5%	10.9%

* A "full-time" undergraduate student load is 12 or more semester credits.

** "Other" includes students reported as American Indian/Alaskan Native, Asian American, Hispanic American, Hawaiian Native/Pacific Islander, those reporting two or more races, International and those whose ethnicity is unknown.
Source: Office of Strategic Research, ASU System, NCES IPEDS

Total Enrollment



Henderson State University - Fall 2016 to Fall 2020

A-State Domestic Enrollment						Percentage of Total Enrollment				
	2016	2017	2018	2019	2020	2016	2017	2018	2019	2020
Total Headcount	3,565	3,336	3,959	4,027	3,163					
High School	14	6	403	457	21	0.4%	0.2%	10.2%	11.3%	0.7%
Undergraduate	3,053	2,828	3,000	3,064	2,607	85.6%	84.8%	75.8%	76.1%	82.4%
Graduate	498	502	556	506	535	14.0%	15.0%	14.0%	12.6%	16.9%
Full-Time**	2,871	2,627	2,838	2,818	2,483	80.5%	78.7%	71.7%	70.0%	78.5%
Part-Time	694	709	1,121	1,209	680	19.5%	21.3%	28.3%	30.0%	21.5%
Full-Time Equivalent	3,141	2,947	3,355	3,371	2,811	88.1%	88.3%	84.7%	83.7%	88.9%

Student Demographics						Percentage of Total Enrollment				
	2016	2017	2018	2019	2020	2016	2017	2018	2019	2020
Headcount by Age										
Under 18	42	36	430	471	45	1.2%	1.1%	10.9%	11.7%	1.4%
18 to 19	1,206	1,084	1,247	1,333	1,029	33.8%	32.5%	31.5%	33.1%	32.5%
20 to 21	947	897	945	904	918	26.6%	26.9%	23.9%	22.4%	29.0%
22 to 24	639	618	566	537	484	17.9%	18.5%	14.3%	13.3%	15.3%
25 to 29	285	279	307	284	243	8.0%	8.4%	7.8%	7.1%	7.7%
30 to 39	235	215	250	259	251	6.6%	6.4%	6.3%	6.4%	7.9%
40 to 64	204	198	205	232	186	5.7%	5.9%	5.2%	5.8%	5.9%
65 & Over	7	9	9	7	7	0.2%	0.3%	0.2%	0.2%	0.2%
Age Unknown	0	0	0	0	0	0.0%	0.0%	0.0%	0.0%	0.0%
Headcount by Gender										
Male	1,467	1,394	1,615	1,603	1,297	41.2%	41.8%	40.8%	39.8%	41.0%
Female	2,098	1,942	2,344	2,424	1,866	58.8%	58.2%	59.2%	60.2%	59.0%
Gender Unknown	0	0	0	0	0	0.0%	0.0%	0.0%	0.0%	0.0%
Headcount by Ethnicity***										
African American	818	724	779	725	603	22.9%	21.7%	19.7%	18.0%	19.1%
White American	2,358	2,234	2,704	2,744	2,039	66.1%	67.0%	68.3%	68.1%	64.5%
Other Ethnicity	389	378	476	558	521	10.9%	11.3%	12.0%	13.9%	16.5%

* A-State enrollment does not include Campus Querétaro, Mexico.

** A "full-time" undergraduate student load is 12 or more semester credits.

*** "Other" includes students reported as American Indian/Alaskan Native, Asian American, Hispanic American, Hawaiian Native/Pacific Islander, those reporting two or more races, International and those whose ethnicity is unknown.

Source: Office of Strategic Research, ASU System

Geographic Origin of Total Enrollment By Arkansas County



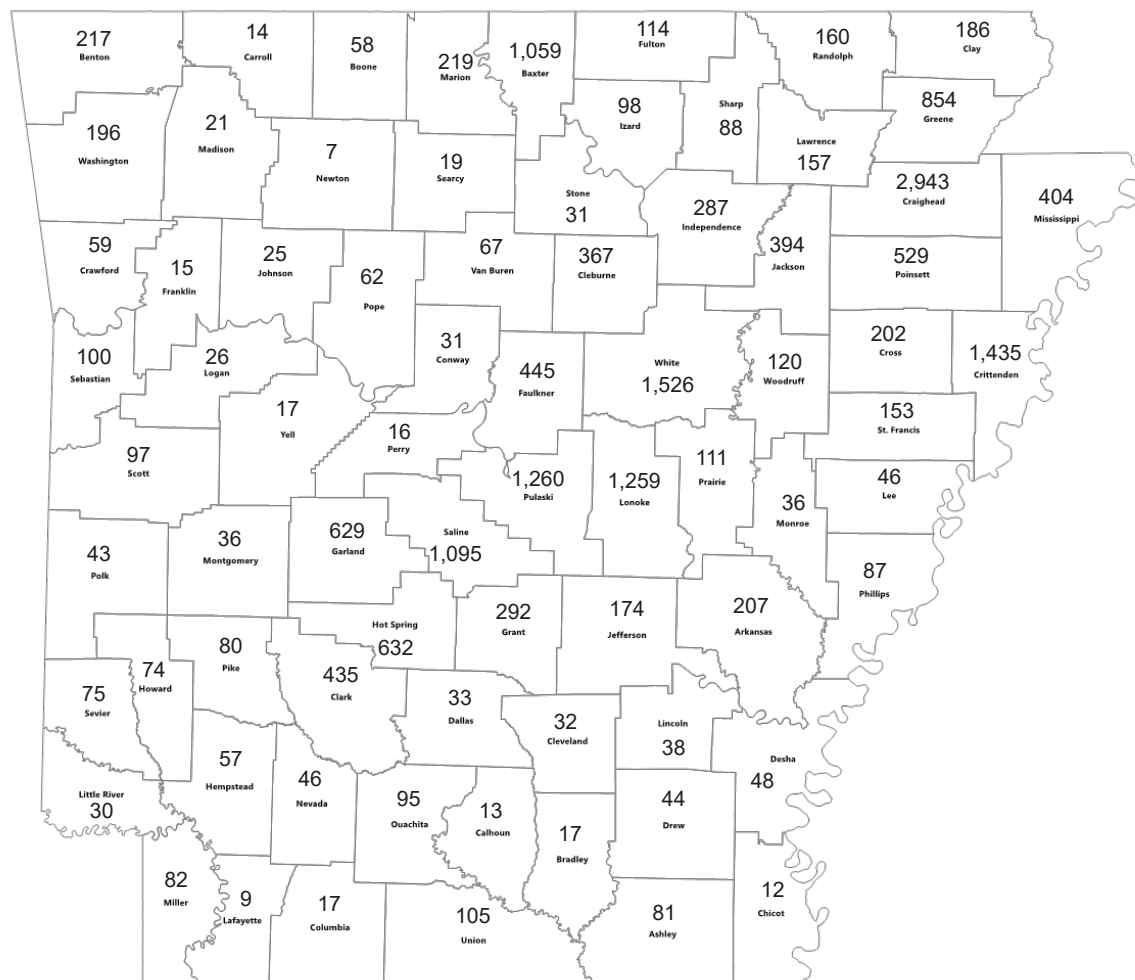
ASU System - Fall 2020

County	A-State	ASUB	ASUMH	ASUN	ASUMS	ASUTR	HSU	Total
Arkansas	91	3	10	85	0	0	18	207
Ashley	57	1	0	2	0	0	21	81
Baxter	179	3	872	2	0	0	3	1,059
Benton	177	2	6	6	1	0	25	217
Boone	37	1	12	0	0	0	8	58
Bradley	10	0	0	0	0	0	7	17
Calhoun	6	0	0	0	0	1	6	13
Carroll	11	0	0	0	0	0	3	14
Chicot	6	1	0	1	0	0	4	12
Clark	18	0	0	2	2	77	336	435
Clay	182	1	0	3	0	0	0	186
Cleburne	69	288	1	2	0	0	7	367
Cleveland	13	4	0	0	0	0	15	32
Columbia	9	0	0	0	0	0	8	17
Conway	23	1	0	1	0	0	6	31
Craighead	2,056	9	2	855	6	1	14	2,943
Crawford	45	0	2	3	0	0	9	59
Crittenden	407	1	1	21	979	0	26	1,435
Cross	166	4	1	20	7	0	4	202
Dallas	8	0	0	0	0	7	18	33
Desha	33	3	0	3	0	0	9	48
Drew	29	2	0	1	0	0	12	44
Faulkner	170	215	1	2	1	7	49	445
Franklin	9	1	1	0	0	0	4	15
Fulton	57	2	51	4	0	0	0	114
Garland	123	8	0	1	0	67	430	629
Grant	48	2	0	0	0	170	72	292
Greene	791	3	2	50	1	0	7	854
Hempstead	14	0	0	0	0	2	41	57
Hot Spring	40	2	0	0	0	348	242	632
Howard	11	0	0	0	0	0	63	74
Independence	224	10	5	43	0	0	5	287
Izard	57	2	36	3	0	0	0	98
Jackson	114	7	0	266	0	0	7	394
Jefferson	123	2	0	4	0	16	29	174
Johnson	12	1	0	1	0	0	11	25
Lafayette	0	1	0	0	0	0	8	9
Lawrence	136	3	2	16	0	0	0	157

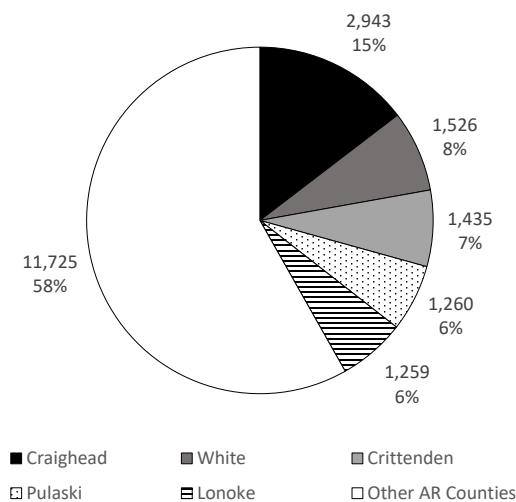
County	A-State	ASUB	ASUMH	ASUN	ASUMS	ASUTR	HSU	Total
Lee	38	1	0	2	4	0	1	46
Lincoln	31	1	0	0	0	0	6	38
Little River	7	0	0	0	0	0	23	30
Logan	19	0	0	0	0	0	7	26
Lonoke	363	836	2	8	1	2	47	1259
Madison	19	0	1	0	0	0	1	21
Marion	46	0	172	0	1	0	0	219
Miller	18	2	0	2	0	0	60	82
Mississippi	348	2	0	34	7	0	13	404
Monroe	28	3	0	0	0	0	5	36
Montgomery	8	1	0	1	0	1	25	36
Nevada	6	1	0	1	0	0	38	46
Newton	5	0	2	0	0	0	0	7
Ouachita	36	0	0	0	0	1	58	95
Perry	9	2	0	0	0	2	3	16
Phillips	72	2	0	5	0	0	8	87
Pike	3	1	0	0	0	1	75	80
Poinsett	261	1	0	262	4	0	1	529
Polk	18	0	0	0	0	0	25	43
Pope	48	0	2	0	0	0	12	62
Prairie	54	48	0	3	0	0	6	111
Pulaski	703	257	3	9	7	63	218	1260
Randolph	145	2	1	9	0	0	3	160
Saline	279	11	2	6	2	470	325	1095
Scott	92	0	0	1	0	0	4	97
Searcy	3	6	7	0	0	0	3	19
Sebastian	73	5	2	1	1	0	18	100
Sevier	30	0	0	0	0	0	45	75
Sharp	71	1	5	4	0	0	7	88
St. Francis	107	1	0	8	24	0	13	153
Stone	23	2	5	0	1	0	0	31
Union	33	2	0	0	0	0	70	105
Van Buren	19	42	1	1	0	1	3	67
Washington	132	1	3	30	2	0	28	196
White	343	1117	2	43	1	2	18	1526
Woodruff	48	29	0	41	0	0	2	120
Yell	7	0	0	0	0	0	10	17
Total	9,106	2,960	1,215	1,868	1,052	1,239	2,708	20,148

Geographic Origin of Total Enrollment By Arkansas County

ASU System - Fall 2020



TOP 5 ARKANSAS COUNTIES



Geographic Origin of Total Enrollment

By State, Territory & Foreign Country



ASU System - Fall 2019

Geography	A-State	ASUB	ASUMH	ASUN	ASUMS	ASUTR	HSU	Total
Alabama	51	1	0	1	0	0	2	55
Alaska	10	0	0	0	0	0	1	11
Arizona	19	1	1	0	0	0	4	25
Arkansas	9,104	2,960	1,215	1,868	1,052	1,239	2,708	20,148
California	115	2	1	1	1	0	8	128
Colorado	33	0	0	0	0	1	1	35
Connecticut	21	0	0	0	0	0	0	21
Delaware	4	0	0	0	0	0	0	4
District of Columbia	3	0	0	0	0	0	0	3
Florida	101	0	0	0	0	0	10	111
Georgia	102	0	0	0	0	0	4	106
Hawaii	5	0	0	0	0	0	2	7
Idaho	16	0	0	0	0	0	0	16
Illinois	85	0	1	1	1	0	3	91
Indiana	18	0	0	1	0	0	3	22
Iowa	14	0	0	0	0	0	1	15
Kansas	41	0	0	0	1	0	5	47
Kentucky	14	0	0	1	0	0	2	17
Louisiana	78	2	1	1	0	0	23	105
Maine	2	0	0	0	0	0	0	2
Maryland	28	0	0	0	0	0	0	28
Massachusetts	18	0	0	0	0	0	3	21
Michigan	68	0	1	0	0	0	1	70
Minnesota	11	0	0	0	0	1	0	12
Mississippi	554	0	2	1	23	0	13	593
Missouri	750	1	45	12	0	0	12	820
Montana	7	1	0	0	0	0	1	9
Nebraska	6	0	0	0	0	0	1	7
Nevada	17	0	0	0	0	0	4	21
New Hampshire	1	0	0	0	0	0	0	1

Geography	A-State	ASUB	ASUMH	ASUN	ASUMS	ASUTR	HSU	Total
New Jersey	53	0	0	0	0	0	1	54
New Mexico	11	0	0	0	0	0	0	11
New York	38	0	0	0	0	0	1	39
North Carolina	42	0	1	1	0	0	3	47
North Dakota	2	0	0	0	0	0	0	2
Ohio	52	0	0	0	1	0	1	54
Oklahoma	70	1	1	2	1	0	14	89
Oregon	10	0	0	0	0	0	1	11
Pennsylvania	47	0	0	1	0	0	0	48
Rhode Island	1	0	0	1	0	0	0	2
South Carolina	111	0	0	1	0	0	2	114
South Dakota	8	0	0	0	0	0	0	8
Tennessee	631	0	1	14	114	0	5	765
Texas	193	3	1	10	2	0	281	490
Utah	16	0	0	1	0	0	0	17
Vermont	2	0	0	0	0	0	0	2
Virginia	40	3	0	0	0	0	2	45
Washington	22	0	0	0	0	0	1	23
West Virginia	4	0	0	0	0	0	1	5
Wisconsin	16	0	0	1	0	0	2	19
Wyoming	8	0	0	0	0	0	1	9
Puerto Rico	3	0	0	0	0	0	0	3
U.S. Territory	2	0	0	0	0	0	0	2
Virgin Islands	1	0	0	0	0	0	0	1
Military Posting	3	1	0	0	0	0	0	4
Foreign Country*	1,159	6	0	22	7	2	35	1,231
Total	13,843	2,982	1,271	1,941	1,203	1,243	3,163	25,646

* A-State includes 737 students enrolled at Campus Queretaro in Mexico.
Source: Office of Strategic Research, ASU System

Geographic Origin of Total Enrollment By State

ASU System - Fall 2020



Source: Office of Strategic Research, ASU System

First-Time in College Students



ASU System - Fall 2020

Total First-Time in College Student Enrollment									
	A-State	ASUB	ASUMH	ASUN	ASUMS	ASUTR	HSU	Total	% of Total
Total First-Time in College	1,564	666	245	288	122	73	563	3,521	
Full-Time*	1,501	598	164	210	74	55	549	3,151	89.5%
Part-Time	63	68	81	78	48	18	14	370	10.5%
Full-Time Equivalent	1,533	592	196	237	90	59	548	3,256	92.5%
Avg. Hours Enrolled per Semester	14.7	13.3	12.0	12.3	11.1	12.1	14.6		
Full-Time	15.0	14.0	13.9	14.1	13.8	13.7	14.8		
Part-Time	6.8	7.8	8.1	7.5	7.0	7.1	6.9		

First-Time in College Student Demographics									
	A-State	ASUB	ASUMH	ASUN	ASUMS	ASUTR	HSU	Total	% of Total
Male	638	251	99	139	61	26	268	1,482	42.1%
Female	926	413	146	148	61	47	295	2,036	57.8%
Unknown Gender	0	2	0	1	0	0	0	3	0.1%
Headcount by Ethnicity									
African American	183	34	0	39	73	6	126	461	13.1%
American Indian/Alaskan Native	16	0	1	2	0	0	0	19	0.5%
Asian American	17	8	0	1	1	2	0	29	0.8%
Hispanic American	82	0	9	25	7	6	49	218	6.2%
Native Hawaiian/Pacific Islander	2	2	0	0	0	0	10	14	0.4%
White American	925	561	221	204	39	51	312	2,313	65.7%
Two or More Races	0	19	13	5	2	8	46	93	2.6%
Ethnicity Unknown	53	2	1	9	0	0	12	77	2.2%
International	286	0	0	3	0	0	8	297	8.4%

*A "full-time" undergraduate student load is 12 or more semester credits.
Source: Office of Strategic Research, ASU System

First-Time in College Students By ACT Score Distribution



ASU System - Fall 2020

Total First-Time in College Student Enrollment									
ACT Score	A-State*	ASUB	ASUMH	ASUN	ASUMS	ASUTR	HSU	Total	% of Total
11	0	0	0	1	1	0	0	2	0.1%
12	0	4	0	1	1	2	0	8	0.3%
13	1	9	1	2	5	0	0	18	0.6%
14	2	15	5	5	10	2	0	39	1.4%
15	5	37	4	20	8	2	2	78	2.8%
16	18	48	5	23	17	4	32	147	5.2%
17	39	42	6	25	10	1	52	175	6.2%
18	69	52	6	23	12	2	41	205	7.3%
19	107	53	16	25	12	7	63	283	10.1%
20	129	63	12	19	5	0	68	296	10.6%
21	139	45	7	13	3	6	37	250	8.9%
22	111	51	9	13	4	4	42	234	8.4%
23	92	42	8	8	4	1	40	195	7.0%
24	101	50	7	5	0	5	30	198	7.1%
25	104	33	12	1	2	1	33	186	6.6%
26	88	14	4	3	0	1	20	130	4.6%
27	59	16	6	0	0	0	13	94	3.4%
28	51	9	0	1	0	0	13	74	2.6%
29	38	5	1	2	1	0	17	64	2.3%
30	29	7	2	1	0	0	9	48	1.7%
31	24	2	0	0	0	0	4	30	1.1%
32	27	0	0	0	0	0	5	32	1.1%
33	8	0	0	0	0	0	1	9	0.3%
34	3	0	1	0	0	0	0	4	0.1%
35	2	0	0	0	0	0	0	2	0.1%
Total	1,246	597	112	191	95	38	522	2,801	
Average	23.1	20.3	21.1	18.7	17.4	19.5	21.5	21.6	
Score not reported**	47	69	133	97	27	35	41	449	

*Does not include ASU Campus Queretaro.

**Other test scores may be reported such as SAT or ACCUPLACER.
Source: Office of Strategic Research, ASU System

First-Time Transfer Students



ASU System - Fall 2020

Total First-Time Transfer Student Enrollment									
	A-State	ASUB	ASUMH	ASUN	ASUMS	ASUTR	HSU	Total	% of Total
Total First-Time Transfers	735	110	61	103	49	59	174	1,291	
Full-Time*	406	74	37	68	17	35	139	776	60.1%
Part-Time	329	36	24	35	32	24	35	515	39.9%
Full-Time Equivalent	551	85	44	78	32	40	159	989	76.6%
Avg. Hours Enrolled per Semester	11.2	11.6	10.7	11.3	9.8	10.2	13.7		
Full-Time	14.9	13.7	13.6	13.7	13.9	12.9	15.1		
Part-Time	6.8	7.3	6.3	6.6	7.6	6.4	8.2		

First-Time Transfer Student Demographics									
	Campus							Total	% of Total
	A-State	ASUB	ASUMH	ASUN	ASUMS	ASUTR	HSU	Total	Total
Male	238	42	22	31	20	11	72	436	33.8%
Female	492	68	39	72	29	48	102	850	65.8%
Unknown	5	0	0	0	0	0	0	5	0.4%
Headcount by Ethnicity									
African American	127	16	1	19	27	21	28	239	18.5%
American Indian/Alaskan Native	6	0	0	2	0	0	0	8	0.6%
Asian American	7	1	0	0	0	0	0	8	0.6%
Hispanic American	41	2	2	4	2	4	12	67	5.2%
Native Hawaiian/Pacific Islander	0	0	0	0	0	0	3	3	0.2%
White American	499	89	56	71	15	33	109	872	67.5%
Two or More Races	0	0	2	1	4	1	18	26	2.0%
Unknown Ethnicity	17	2	0	6	0	0	4	29	2.2%
International	38	0	0	0	1	0	0	39	3.0%

*A "full-time" undergraduate student load is 12 or more semester credits.
Source: Office of Strategic Research, ASU System

Graduate Students



ASU System - Fall 2020

Total First-Time in College Student Enrollment								
	A-State	HSU	Total	% of Total		A-State	HSU	Total % of Total
Total Graduate Students	4,620	535	5,155		Level of Study			
Full-Time*	629	122	751	14.6%	Unclassified Graduate	31	82	113 2.2%
Part-Time	3,991	413	4,404	85.4%	Graduate Certificate	909	41	950 18.4%
Full-Time Equivalent*	1,919	286	2,205	42.8%	Master's	3,253	412	3,665 71.1%
Avg. Hours Enrolled per Semester	5.0	6.4	5.1		Doctoral - Research	74	0	74 1.4%
Full-Time	11.4	9.4	11.0		Doctoral - Prof. Pract.	353	0	353 6.8%
Part-Time	4.0	5.5	4.1					
Graduate Student Demographics								
	A-State	HSU	Total	% of Total	Age as of Sept. 1	A-State	HSU	Total % of Total
Male	1,417	141	1,558	30.2%	Under 25	825	135	960 18.6%
Female	3,203	394	3,597	69.8%	25 & Above	3,795	400	4,195 81.4%
Unknown Gender	0	0	0	0.0%				
Headcount by Ethnicity								
African American	663	105	768	14.9%				
American Indian/Alaskan Native	50	4	54	1.0%				
Asian American	52	0	52	1.0%				
Hispanic American	149	21	170	3.3%				
Native Hawaiian/Pacific Islander	5	0	5	0.1%				
White American	3,425	375	3,800	73.7%				
Two or More Races	0	12	12	0.2%				
Ethnicity Unknown	138	15	153	3.0%				
International	138	3	141	2.7%				

*A "full-time" graduate student load is 9 or more semester credits. One graduate FTE is based on 12 semester credit hours.
Source: Office of Strategic Research, ASU System



Academic Progress

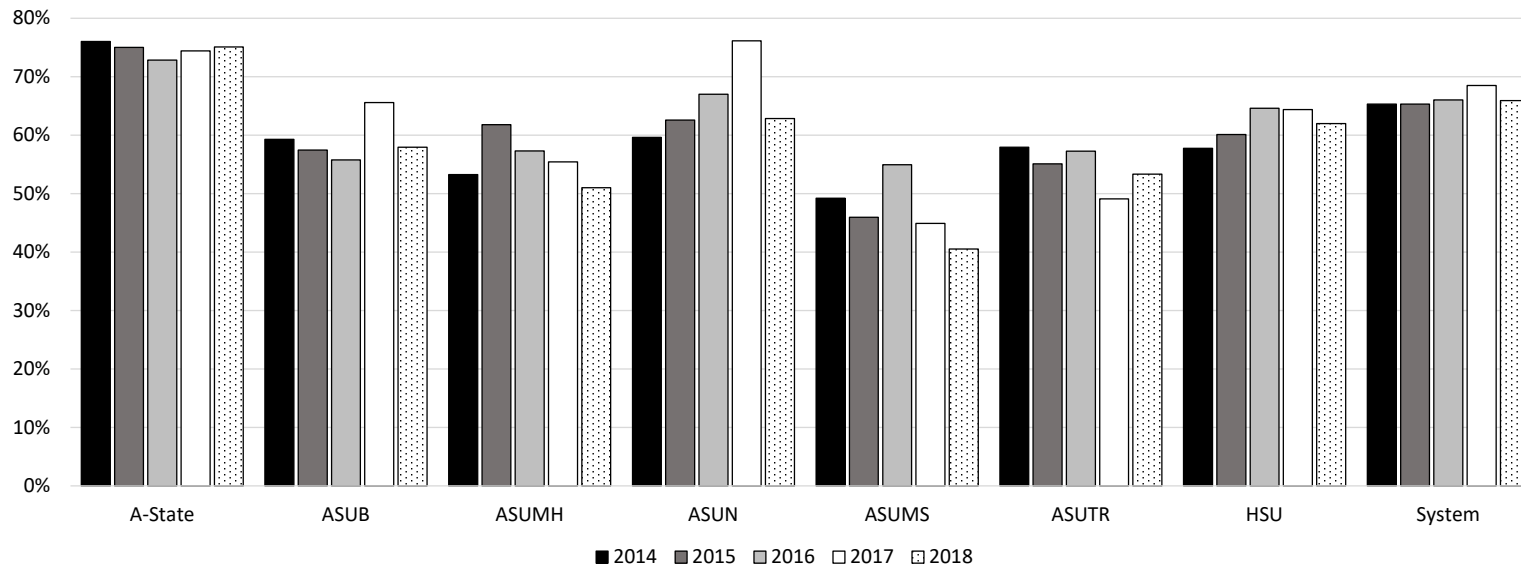
Academic Progress - Retention Rates



ASU System - Fall 2014 - Fall 2018

Full-Time, First-Time in Adjusted Cohort 1-Year Retention Rate														
	Adjusted Cohort							1-Year Retention Rate						
	A-State	ASUB	ASUMH	ASUN	ASUMS	ASUTR	HSU	A-State	ASUB	ASUMH	ASUN	ASUMS	ASUTR	HSU
Fall 2018	1,701	661	151	296	116	75	842	75.1%	57.9%	51.0%	62.8%	40.5%	53.3%	62.0%
Fall 2017	1,595	729	184	331	118	110	615	74.4%	65.6%	55.4%	76.1%	44.9%	49.1%	64.4%
Fall 2016	1,609	565	192	306	142	124	740	72.8%	55.8%	57.3%	67.0%	54.9%	57.3%	64.6%
Fall 2015	1,540	571	178	302	198	118	757	75.0%	57.4%	61.8%	62.6%	46.0%	55.1%	60.1%
Fall 2014	1,680	604	199	359	187	145	767	76.0%	59.3%	53.3%	59.6%	49.2%	57.9%	57.8%

FIRST-YEAR RETENTION RATES FOR FULL-TIME, FIRST-TIME IN COLLEGE STUDENTS BY COHORT YEAR



* A-State includes Campus Querétaro, Mexico.
Source: Office of Strategic Research, ASU System; NCES IPEDS

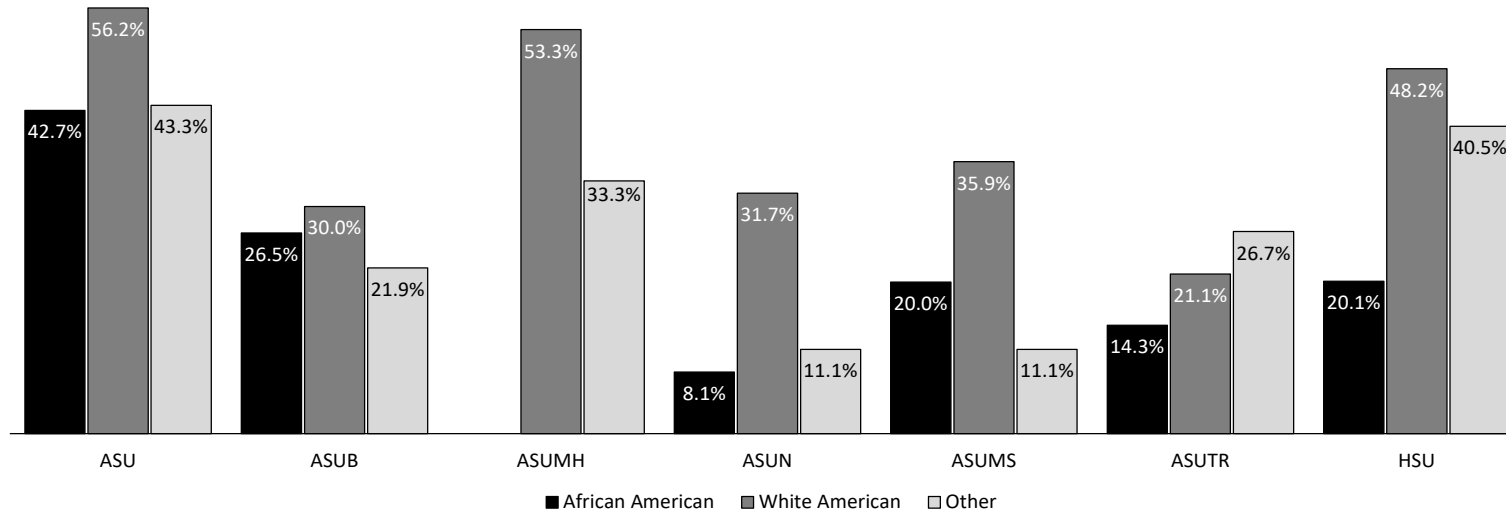
Academic Progress - 150% Graduation Rates*



ASU System

Fall Semester	Campus	Adjusted Cohort	Completers Within 150% of Time	150% Graduation Rate	Graduating with Bachelor's Within 150% of Time		
					4 Years	5 Years	6 Years
2013	A-State	1,575	835	53.0%	35.2%	47.4%	50.5%
	HSU	697	270	38.7%	23.8%	33.4%	38.5%
2016	ASUB	565	163	28.8%			
	ASUMH	192	100	52.1%			
	ASUN	303	80	26.4%			
	ASUMS	143	34	23.8%			
	ASUTR	124	33	26.6%			

150% GRADUATION RATES FOR FULL-TIME, FIRST-TIME IN COLLEGE STUDENTS BY ETHNICITY**



* Graduates Rates are cumulative and based on IPEDS Methodology. Graduation Rates within 150% of time represents students earning a certificate within 150% of normal time to completion, an associate degree within 3 years and students earning a bachelor's degree within 4-5-or 6 years. Adjusted Cohort reflects the original fall cohort after allowable exclusions: Students who died or became permanently disabled; students who left school to serve in the armed forces; students who left school to serve with a foreign aid service of the Federal Government; and students who left school to serve on an official church mission.

** "Other" includes students reported as American Indian/Alaskan Native, Asian American, Hispanic American, Native Hawaiian/Pacific Islander, those reporting two or more races, International and those whose ethnicity is unknown.
Source: Office of Strategic Research, ASU System; NCES IPEDS



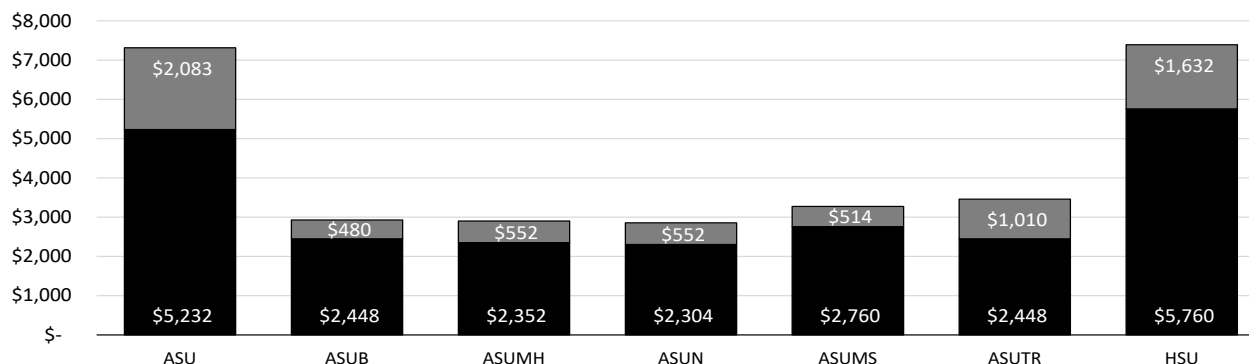
Tuition & Fees

Tuition & Required Fees

ASU System - 2020-2021

Undergraduate					
Campus	Annual Tuition (Based on 12 Hour Load per Semester)		Per Credit Hour Tuition		Annual Fees (Based on 12 Hour Load per Semester)
	Resident	Nonresident	Resident	Nonresident	
A-State	\$5,232	\$10,800	\$218	\$450	\$2,083
HSU	5,760	7,680	240	320	1,632
4-Year Campus Average	5,496	9,240	229	385	1,858
ASU-Beebe	2,448	4,176	102	174	480
ASU-Mountain Home	2,352	3,972	98	165	552
ASU-Newport	2,304	3,768	96	157	552
ASU Mid-South	2,760	3,720	115	155	514
ASU Three Rivers	2,448	4,872	102	203	1,010
2-Year Campus Average	2,462	4,102	103	171	622

Graduate					
Campus	Annual Tuition (Based on 9 Hour Load per Semester)		Per Credit Hour Tuition		Annual Fees (Based on 9 Hour Load per Semester)
	Resident	Nonresident	Resident	Nonresident	
A-State	\$4,986	\$9,972	\$277	\$554	\$1,614
HSU	5,580	7,452	310	414	1,224



Source: Office of Strategic Research, ASU System

■ Undergraduate Resident Annual Tuition (12 hour load) ■ Annual Fees



Student Financial Aid

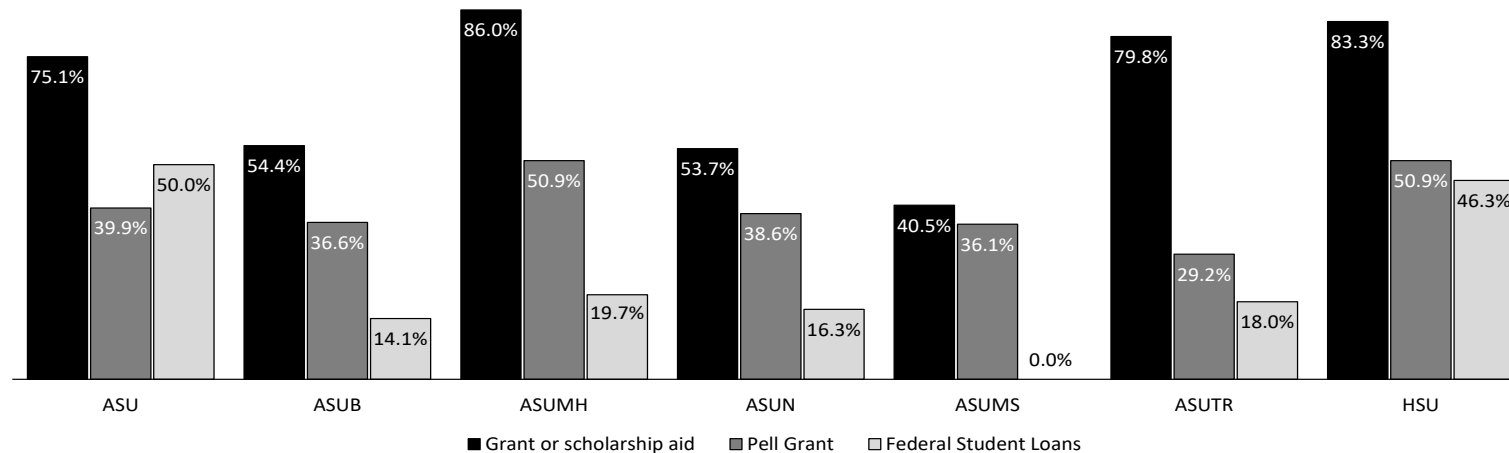
Student Financial Aid - Undergraduate Students



ASU System - AY 2018-2019

Campus	Undergraduate Students*	Percent Awarded Grant or Scholarship Aid	Percent Awarded Pell Grants	Percent Disbursed Federal Student Loans
A-State	9,350	75.1%	39.9%	50.0%
ASUB	3,447	54.4%	36.6%	14.1%
ASUMH	1,345	86.0%	50.9%	19.7%
ASUN	2,270	53.7%	38.6%	16.3%
ASUMS	1,423	40.5%	36.1%	0.0%
ASUTR	1,259	79.8%	29.2%	18.0%
HSU	2,836	83.3%	50.9%	46.3%
System	22,498	69.8%	40.7%	33.8%

PERCENT OF UNDERGRADUATE STUDENTS BY TYPE OF AID



* Undergraduate Students do not include students enrolled at Campus Queretaro.
Source: NCES IPEDS



Employees

System Employee Summary



ASU System

Full-Time Employees by Category

	A-State*	ASUB	ASUMH	ASUN	ASUMS	ASUTR	HSU	System Office	Total
Full-Time Employees	1,569	269	106	160	125	99	397	20	2,745
Postsecondary Teachers	536	94	41	69	40	29	182	0	991
Archivists, Curators & Museum Technicians	7	0	0	0	0	0	1	0	8
Librarians & Library Technicians	23	2	3	1	0	2	4	0	35
Student, Academic & Other Educational Services Occupations	32	14	12	7	0	0	0	0	65
Management Occupations	221	29	17	24	21	24	21	9	366
Business & Financial Occupations	262	16	3	3	3	6	23	5	321
Computer, Engineering & Science Occupations	62	11	4	5	6	7	12	0	107
Comm. & Social Serv., Legal, Arts, Design, Sports & Media Occupations	80	32	0	12	27	7	71	4	233
Healthcare Practitioners & Technical Occupations	7	0	0	0	0	0	3	0	10
Service Occupations, Sales & Related	101	9	8	13	7	1	11	0	150
Office & Administrative Support Occupations	136	50	15	23	21	18	64	2	329
Natural Resources, Construction & Maintenance Occupations	98	12	3	3	0	5	2	0	123
Production, Transportation & Material Moving Occupations	4	0	0	0	0	0	3	0	7
By Gender									
Male	652	110	40	61	51	35	169	8	1,126
Female	910	159	66	99	74	64	228	12	1,612
Unknown	7	0	0	0	0	0	0	0	7
By Race / Ethnicity									
African American	178	8	0	13	35	13	43	2	292
White American	1,201	248	102	145	81	84	317	18	2,196
Other Race / Ethnicity	70	13	4	2	5	1	34	0	129
Unknown Race / Ethnicity	47	0	0	0	2	1	2	0	52
International	73	0	0	0	2	0	1	0	76
Total Known Minorities**	250	21	4	15	40	14	77	2	421
	15.8%	7.8%	3.8%	9.4%	32.0%	14.1%	19.4%	10.0%	15.3%

* A-State does not include employees for Campus Queretaro, Mexico.

**Minorities include African American, American Indian/Alaskan Native, Asian American, Hispanic American, Native Hawaiian/Pacific Islander, and those reporting two or more races.
Source: Office of Strategic Research, ASU System

System Employee Summary



ASU System

Part-Time Employees by Category

	A-State*	ASUB	ASUMH	ASUN	ASUMS	ASUTR	HSU	System Office	Total
Part-Time Employees	602	103	74	109	83	54	104	1	1,130
Postsecondary Teachers	188	77	46	63	62	41	41	0	518
Archivists, Curators & Museum Technicians	4	0	0	0	0	0	0	0	4
Librarians & Library Technicians	0	0	1	0	0	0	0	0	1
Student, Academic & Other Educational Services Occupations	57	14	7	11	0	3	0	0	92
Management Occupations	0	0	0	0	0	0	1	0	1
Business & Financial Occupations	2	0	0	0	0	0	0	1	3
Computer, Engineering & Science Occupations	22	0	1	1	0	1	0	0	25
Comm. & Social Serv., Legal, Arts, Design, Sports & Media Occupations	50	0	0	1	1	0	0	0	52
Healthcare Practitioners & Technical Occupations	1	0	0	0	0	0	0	0	1
Service Occupations, Sales & Related	37	9	12	14	15	1	1	0	89
Office & Administrative Support Occupations	15	3	7	19	4	8	4	0	60
Natural Resources, Construction & Maintenance Occupations	1	0	0	0	0	0	0	0	1
Production, Transportation & Material Moving Occupations	2	0	0	0	1	0	0	0	3
Graduate Assistants	223	n/a	n/a	n/a	n/a	n/a	57	0	280
By Gender									
Male	238	34	26	27	44	16	40	0	425
Female	361	69	48	82	39	38	64	1	702
By Race / Ethnicity									
African American	63	3	1	10	29	4	8	0	118
White American	405	97	70	98	46	47	88	1	852
Other Race / Ethnicity	26	3	2	1	5	2	3	0	42
Unknown Race / Ethnicity	21	0	1	0	2	1	2	0	27
International	87	0	0	0	1	0	3	0	91
Total Known Minorities**	89	6	3	11	34	6	11	0	160
	14.8%	5.8%	4.1%	10.1%	41.0%	11.1%	10.6%	0.0%	14.2%

* A-State does not include employees for Campus Queretaro, Mexico.

**Minorities include African American, American Indian/Alaskan Native, Asian American, Hispanic American, Native Hawaiian/Pacific Islander, and those reporting two or more races.
Source: Office of Strategic Research, ASU System

System Employee Summary



ASU System

Full-Time Postsecondary Faculty

	A-State*	ASUB	ASUMH	ASUN	ASUMS	ASUTR	HSU	Total
Full-Time Postsecondary Faculty	536	94	41	69	40	29	182	991
By Academic Rank								
Professor / Master Instructor	110	5	0	2	0	0	54	171
Associate Professor / Senior Instructor	125	10	0	7	0	0	39	181
Assistant Professor / Advanced Instructor	162	44	0	44	1	0	57	308
Instructor	136	35	0	14	34	0	22	241
Lecturer	0	0	0	0	0	0	7	7
No Rank	0	0	0	0	0	28	0	28
Undesignated	0	0	0	2	0	0	0	2
Not Applicable	3	0	41	0	5	1	3	53
By Tenure Status								
Tenured	221	13	0	3	0	0	85	322
On Tenure Track	126	2	0	0	0	0	44	172
Not on Tenure Track	189	79	41	66	40	29	53	497
By Gender								
Male	239	48	17	29	23	16	92	464
Female	292	46	24	40	17	13	90	522
Unknown	5	0	0	0	0	0	0	5
By Race / Ethnicity								
African American	32	2	0	2	8	1	9	54
White American	390	87	40	67	28	28	148	788
Other Race / Ethnicity	31	5	1	0	2	0	23	62
Unknown Race / Ethnicity	28	0	0	0	1	0	1	30
International	55	0	0	0	1	0	1	57
Total Known Minorities**	63	7	1	2	10	1	32	116
	11.8%	7.4%	2.4%	2.9%	25.0%	3.4%	17.6%	11.7%

* A-State does not include employees for Campus Queretaro, Mexico.

**Minorities include African American, American Indian/Alaskan Native, Asian American, Hispanic American, Native Hawaiian/Pacific Islander, and those reporting two or more races.

Source: Office of Strategic Research, ASU System

