



MIX BIOPHILIC PANELS

All Natural Preserved Plants On Mobiles



Product Highlights

- Available on Contemporary or Industrial mobiles
- Biophilic panels retain their vibrant, fresh-cut look for 10+ years, giving designers a creative, long-lasting option for nature-themed interiors
- These all natural preserved plants do not require water, sunlight, soil, misting or irrigation
- Choose from two standard designs, custom designs available upon request

MIX
by Claridge

Highly customizable,
mixed-material mobile
and wall mounted
markerboards



Custom biophilic design examples

Features and Benefits

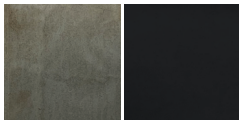
- Numerous credit contributions for LEED® v4 projects (BD+C, ID+C, O+M)
- Wall garden installations have significant noise reduction coefficient (NRC)
- Conforms to requirements within the WELL Building Standard® and the Healthy Hospital Initiative (HHI)

Standard Sizes and Colors

- Available on full height mobiles measuring 72" from top to bottom, in panel width of 42"
- Responsibly harvested Ash wood frames available in Clear, Vellum, Driftwood and Rustic stains

Standard Industrial Metal Colors

Metal Base: Matte Clear
*Accent Strip: Matte Black



Matte Clear Matte Black
302P

*Also available in 180 powder coat colors

Standard Contemporary Metal Colors

*Metal Base and Accent Strip:
White, Gray & Matte Black

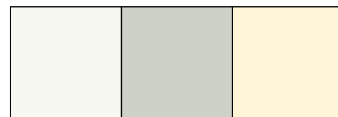


RAL9003 RAL7015 Matte Black
Signal White Slate Gray 302P

Ash Wood Frame Stains



LCS³ Porcelain™ Colors



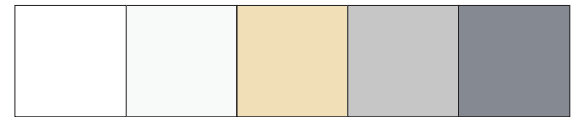
White Light Gray Beige

LCS³ Chalkboard Colors

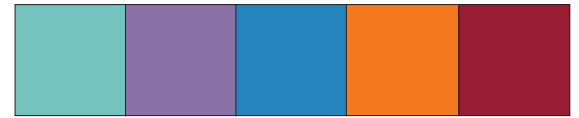


Green Black Gray

Standard Claridge Glass Colors



*Brilliant White Calm White Light Ivory Telegrey Signal Gray



Light Green Blue Lilac Light Blue Bright Red Orange Ruby Red

*Standard glass markerboard color comes in Brilliant White

Available in 180 optional colors and unlimited colors.



800.434.4610
claridgeproducts.com

This product can be found on:

