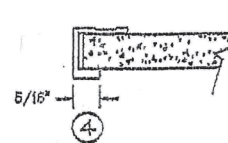
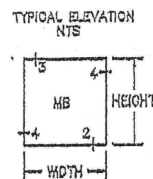
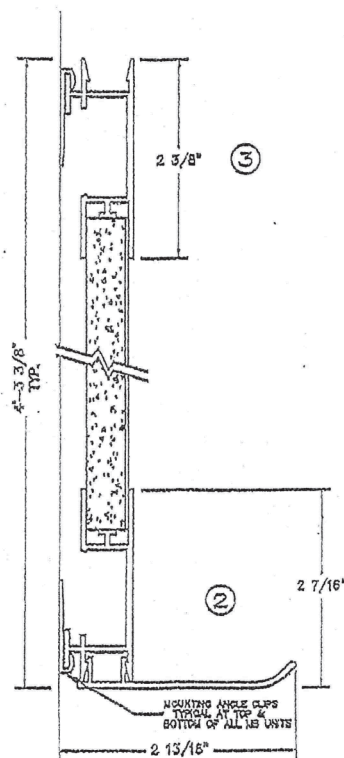




Evolve Markerboard & Tackboard

Installation Instructions

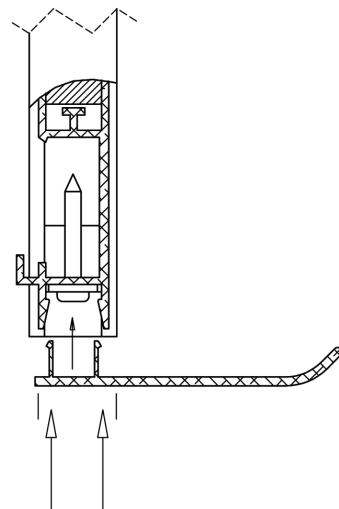
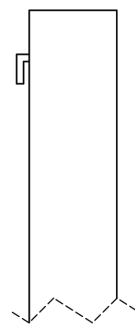
1. Determining desired position on wall and mark the height of the bottom of the board. Drill holes for mounting clips 2" above the desired height of board, allowing the clip to rest on the screw when securing to the wall.
2. Mount bottom hangers to wall with required type wall fastener. Wall fasteners not furnished.
3. Using a straight edge, shim where necessary so that all anchor points of hanger are in line with level. Anchor securely to wall.
4. Determine height for top of board, measure down 1 1/2" and drill holes for clips.
5. Hold the clip in the highest position when tightening to the wall and do not overtighten as the clip will need to be tapped down to hold firmly against the board.
6. If adhesive is being used, apply glue to the back of the board. Position the board on the wall and rest the bottom of the board's built-in hanger on the clips at bottom and press the board to the wall, tapping down on the clips at top to engage the clips and the trim's built-in hanger.
7. For boards with accessory tray, insert backing of tray into trim and rotate up into position. A rubber mallet can be used to tap the tray into place. (Note: If mallet is needed to "seat" the tray, be sure to use as close to back of tray as possible.)





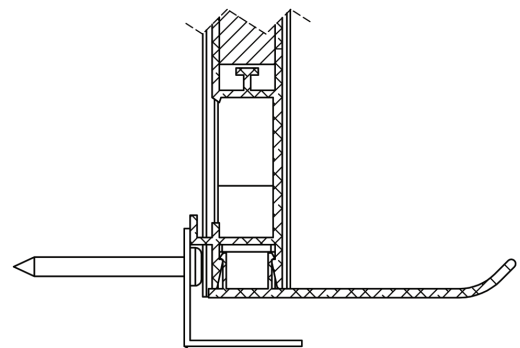
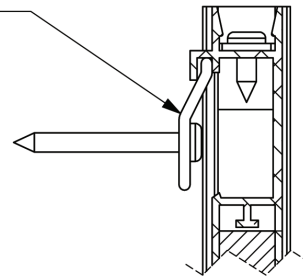
Evolve – Tray & Hanging Board Installation Instructions

1. Assemble the marker tray to the board before mounting the marker board on the wall.
2. To assemble the marker tray, fit the legs of the marker tray into the channel along the lower edge of the board snapping the tray into place. For safety and quality purposes the tray has a very snug fit. Striking the bottom side of the tray with a rubber mallet can be done if assembling the tray is difficult. Strike only in the area directly in line with the board to prevent bending the tray.
3. Hang the board from the z-clips by the lip built into the back surface of the top trim.
4. Tap the angle mounted to the wall at the bottom of the board up until they touch the bottom surface of the marker tray.
5. Drive one #8 screw through the slot in the angle clip and into the tray and lower trim until flush with the bottom of the clip, securing the board to the clip. Repeat for all clips.



IF NECESSARY
STRIKE IN THIS
AREA to SEAT TRAY

HANG BOARD FROM
Z-CLIPS AT TOP



TAP ANGLE BRACKETS UP TO
BOTTOM SURFACE OF TRAY

DRIVE SCREWS INTO SLOT
IN ANGLE BRACKET UNTIL
FLUSH WITH BOTTOM OF
ANGLE BRACKET

