



## Rare Earth Magnets

Product Code: MGM-REMSQ

- Designed specifically for use on magnetic glass boards
- Meets CPSC child safety choking hazard requirements
- Magnets measure 1.29" x 1.29", .44" thick
- Attractive rounded corners, available in black, gray, or white



## NEW Slim Marker Caddy

Product Code: M-MC2P

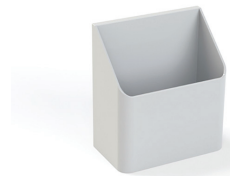
- Available in satin anodized finish, 24 standard aluminum colors, 180 optional colors, or unlimited custom colors
- Lightweight aluminum with rare earth magnet backing
- Measures 9" W, 1-3/8" H, 1-3/8" D
- Holds 4 markers with 3/4" diameter
- Erase cloth holder measures 3" W, 3/4" D
- Radius corners for eased edges



## Magnetic Marker Tray

Product Code: MGM-T1

- Satin anodized aluminum tray stays in place with rare earth magnets
- Measures 12" W, 1-1/2" H, 3" D
- Fabric backed tray with eased corners
- Holds markers and erasers
- For use on both LCS<sup>3</sup> Porcelain and Claridge Glass markerboards



## Stadium Marker Caddy

Product Code: MGM-MC1

- Sculpted plastic magnetic holder with rare earth magnets
- Measures 3-1/2" H, 3-1/8" W, and 1-3/4" D
- Holds up to 8 markers or 2 markers and one microfiber cloth or standard eraser



## Adhesive Backed Tray

Product Codes: GM-Tray1

- Satin anodized aluminum tray stays in place with double-sided tape
- Measures 12" W, 2-7/16" H, 2-11/16" D
- Holds markers and erasers
- For use on both LCS<sup>3</sup> Porcelain and Claridge Glass markerboards



## Magnetic Eraser

Product Code: MGM-ME1

- Black felt eraser with strong rare earth magnets
- Measures 4-1/2" long, 2-1/8" wide and 7/8" thick



## Dry Erase Kit

Product Code: LCS668-4 (kit),  
LCS673-4 (markers only),  
ECM227E (1 cloth only)  
ECM227D (1 dozen cloth only)

- 4 broad-tipped markers
- Red, blue, green and black
- 12"x12" Microfiber eraser cloth with a small magnet



## LCS<sup>3</sup> Magnetic Marker Tray

Product Codes: 267M1

- Measures 12" W, 1 1/2" H, 2 1/2" D
- Holds markers and erasers
- For use on LCS<sup>3</sup> Porcelain™ markerboards



## Magnetic Wood Marker Tray

Product Code: AT-12-Wood

- Wood tray stays in place with magnets
- Measures 12" W
- Holds markers and erasers
- For use on LCS<sup>3</sup> Porcelain™ markerboards



264M

## LCS<sup>3</sup> Magnetic Aluminum & Vinyl Trays

Product Codes:

- 264M – Satin anodized finish aluminum tray is 2-3/4" deep
- 264MP – Powder coat finish aluminum tray
- 265M – Satin anodize finish aluminum tray is 1-5/8" deep
- 265MP – Powder coat finish vinyl tray
- 266MV – Black vinyl tray is 2-1/2" deep
- Aluminum and vinyl magnetic trays adhere to all LCS<sup>3</sup> Porcelain enamel steel markerboards and chalkboards as well as other steel surfaces
- Holds markers, erasers, and other accessories
- For use on LCS<sup>3</sup> Porcelain™ markerboards



## Adhesive Backed Tray

Product Codes: GM-Tray1

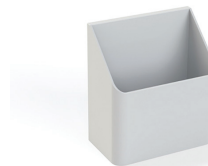
- Satin anodized aluminum tray stays in place with double-sided tape
- Measures 12" W, 2-7/16" H, 2-11/16" D
- Holds markers and erasers
- For use on both LCS<sup>3</sup> Porcelain™ and Claridge Glass markerboards



265MP



266M



## Stadium Marker Caddy

Product Code: MGM-MC1

- Sculpted plastic magnetic holder with rare earth magnets
- Measures 3-1/2" H, 3-1/8" W, and 1-3/4" D
- Holds up to 8 markers or 2 markers and one microfiber cloth or standard eraser



## Partition Panel Clip

Product Code: 80 (set of 2)

- Spring steel clips fit over the top of any 2" thick partitions (clips for thicker panels also available)
- Small prongs fit underneath the board trim



## Standard Sewn Erasers

Product Codes: LCS227E (each), LCS227D (dozen), LCS227G (gross)

- Felt eraser provides dependable service and good cleaning qualities
- Measures 5" W, 2" H, 1-1/4" D
- For use on markerboards or chalkboards
- Quick Ship available



## Dry Erase Kit

Product Code: LCS668-4 (kit), LCS673-4 (markers only), ECM227E (1 cloth only), ECM227D (1 dozen cloth only)

- 4 broad-tipped markers
- Red, blue, green and black
- 12"x12" Microfiber eraser cloth with a small magnet



## Markerboard Cleaner

Product Code: LCS683E

- 8 oz. pump spray
- Cleans and restores LCS<sup>3</sup> Porcelain enamel surfaces