

# PCLS 2018 Annual Report

The Relevance of  
Libraries &  
Economic  
Development



POPE COUNTY  
LIBRARY SYSTEM  
*your connection*



***Ben Cross, Pope County Judge***

### **Message from the Judge**

The Pope County Library System consists of four branches located throughout the County. These facilities assist more than 153,599 visitors and patrons annually from not only Pope County but surrounding Counties and from across the United States who come to check out books for the pleasure of reading and to do research in finding ancestors, et cetera, and to use the research materials available for many needs and purposes.

Pope County supports its library system with a 1 mill tax and provides maintenance for all facilities in order to provide a gathering place for patrons and visitors to help create a literate society. Each facility is staffed with very capable personnel who will be happy to assist you.

As the son of a longtime educator, who spent nearly three decades as an elementary school principal, one of my late father's last requests was to have individuals who might want to honor his legacy, buy a book for a child who might not have the means. I believe this goes to the heart of why libraries exist and play such a vital role in our society.



*Pope County Library Board [L-R] Bob Hardin, Gary Rowlands, Kay Sunderland, Mariola Payne, and Jeanie Gray.*

## Message from the Board

Thank you for your vital support of our Pope County Library System. We are pleased to serve on the Pope County Library Board of Trustees.

Members of the board are appointed by our Pope County Judge and confirmed by the Quorum Court. We focus on the millage and how it is used for ongoing maintenance and operations of the Pope County System Libraries in Atkins, Dover, Hector and Russellville. Our libraries return \$7.00 in library services for every dollar invested through public funding.

Activities have included writers' workshops, genealogy lectures, educational opportunities for technology, summer reading programs, Bookmobile, and many others which serve all ages and interests. Your Pope County Library services are a good return on our investment.



Shawn Pierce, Director  
Pope County Library System

## Message from the Director

The Relevance of Libraries and Economic Development Libraries are about more than books. Libraries are the foundation of Democracy, and economic development which are two of the most essential foundations for a civil society.

We want our officials and citizens to better understand how our libraries power Pope County's future. Looking beyond the books and computers, the Pope County Libraries in Atkins, Dover, Hector, and Russellville help build a better future for citizens in Pope County as a foundation for Democracy and a foundation for Economic Development.

### How do they accomplish this? Through:

- Early Literacy & School Readiness
- Strategies for Building Workforce Participation
- Small Business Support Through Public Libraries, and
- The Power of Place

### Libraries Address Multiple Literacies:

Basic, Financial, Information, Civic & Social, and Health.

Libraries are the key to powering progress and elevating the quality of life by fueling the types of knowledge essential to success: Basic Literacy, Information Literacy, Civic and Social Literacy, Health Literacy, and Financial Literacy.

Between 350 and 700 citizens and future tax payers enter our library doors for Library Services each day. We hook them and get them into the economic pipeline with early literacy rhyme times and story



---

times, keep them interested through the Tween and Teen years with Life-Skills 101 classes and edutainment and ready them to either attain their G.E.D., or prepare to take the A.C.T. test.

Over 50% of Pope County citizens are registered library card holders.

According to the Winthrop Rockefeller Foundation, “From Pine Bluff to Bentonville and from Texarkana to Blytheville—Arkansas employers speak of a consistent challenge: “We’ve got jobs, but we just don’t have the people to fill them.” And, there are over “71,000 skilled trade jobs waiting to be filled in Arkansas,” according to Gina Radke, CEO of Galley Support Innovations.

Libraries are S.T.E.A.M. Education Centers that are essential to S.T.E.M. education efforts because of their strong connections to families and communities that get citizens into the Economic Pipeline early and ensure a strong workforce for the future of our counties.

We are thrilled to serve you!

Shawn E. Pierce

---

# Economic Pipeline

## Early Literacy & School Readiness

### *Investment in Early Education*

Libraries are a key community resource in this area.



Pope County Libraries in many instances are the first step in preparing future tax payers and workers how to read through story

times and 1,000 Books Before kindergarten, to bridge the 30-Million-word gap between poverty and making it.

---

# Mother-Daughter T.E.A.

## Programs to Bridge Tweens over to Teen & Adult Skills

Between Toddler Story time and the Teen programs, our Children's and Teen Librarians have programs to bridge the skills for Tweens with programs like: Mother-Daughter Technology, Engineering and Aptitude (TEA) programs,

The Mother-Daughter Tea (Technology Engineering Aptitude) is an event for girls ages 10-15 with an opportunity to complete hands-on activities and learn about valuable high-wage opportunities in the engineering industry.



## PCLS S.T.E.A.M. Punks!

Our Atkins Centennial Library's S.T.E.A.M. (Science, Technology, Engineering, Art and Math) Punks! is a science-based, hands on program for ages 7 to 13 offered using everyday items such as baking soda, vinegar, glow sticks, soda and playdough. The kids connect science theory with a concrete example, and a sense of ownership of the concept is created encouraging personal exploration.



## Coding with Ozobots



Students use pre-made Ozobot coded pages to become familiar with Ozo code and, then, create a course for their Ozobot using graphing paper. The individual courses combined to create a mega course.

### Endothermic and Exothermic Reactions

The students make ice cream in zip top bags (exothermic) and watch as “hot ice” (crystalized  $\text{C}_2\text{H}_9\text{NaO}_5$ ) is made (exothermic).

At the end of each month, the students suggest topics of interest. These suggestions become the basis for the next month's programs. Each program begins with a short lesson introducing the science concept of that week's topic. Then, an activity is introduced to build on the lesson.





ECONOMIC PIPELINE  
FIRST POINT OF ENTRY: YOUR LIBRARY

Baby Rhyme Time

Story Times

1,000 Books Before  
Kindergarten

Mother-Daughter  
T.E.A.s

Life-Skills 101

G.E.D. Prep  
A.C.T. Prep

Resume Building

POPE COUNTY LIBRARY SYSTEM  
[HTTP://WWW.POPELIBRARY.ORG/](http://www.popelibrary.org/)

## ECONOMY

# POPE COUNTY LIBRARIES

*2018 Return on Investment*

PCLS Your Connection | [www.popelibrary.org](http://www.popelibrary.org)

## REVENUE

Our libraries are funded by both state aid and local tax dollars. Here is a comparison of dollar value of services provided during 2018 with the tax dollars used to generate those services:

In 2018, the Pope County

libraries received \$928,818.06 in Millage collected from property taxes, \$124,623.80 in State Sales Tax, and \$102,810.70 in State Aid. Each tax dollar going to the Pope County libraries generated more than \$7 in library services, a ratio of 7-to-1.

---

## LIBRARY SERVICES

---

### CIRCULATION

The system's 31,797 patrons circulated the libraries 109,116 paper and electronic volumes 313,843 times.

### ELECTRONIC RESOURCES

Our 28 patron computers were used 33,169 times to email, create resumes, fill out job applications & surf.

### PROGRAMS

38,020 patrons attended 1,671 programs, an increase from Year 2017's 1,187 programs..

---

## RETURN ON INVESTMENT

---



#### Our Community

Almost 32,000 of the 62,000 citizens in Pope County have a PCLS Library Card.



#### Our Collection

Our library collection turned over 2.74 times.



#### Our Staff

95% of PCLS employees live in Pope County.

51%

The number of Pope County residents who have a Library card.

---

## POPE COUNTY LIBRARY SYSTEM FOUNDATION, INC.

---

### In Support of PCLS: A Center of Community Life

The Pope County Library System Foundation (PCLSF) would like to share information with you on how to leave a legacy for the Citizens of Pope County.

**phi·lan·thro·pist / noun / (fī-lăn' thrə-pĭst)**  
***someone who makes charitable donations***  
***intended to increase human well-being***

Plans for a city library started in July 1885 when the Excelsior Club, a group of civic-minded young men started raising funds for a city library. In 1905, the San Souci Russellville Women's Group took charge of the library, and books were moved to the club rooms. The Libraries in Atkins, Dover, Hector, and Russellville, now known as the Pope County Library System, provide:

- Gathering Places: Libraries create a sense of place
- Educational Centers: Public libraries are for everyone at every stage of their life.
- Meeting space for community groups.
- Neutral ground for opposing groups and for the discussion of difficult and controversial community topics.
- A level playing field. Equal access to information regardless of intellect or income.

Throughout PCLS' history, individuals have stepped forward to contribute to the education of area residents, A.G. and Betty Barton graciously donated land so that the Dover Public Library could be built. And, the late Dr. Donald Harkey provided for the expansion of the current Russellville Public Library. As a result, the Library Board of Trustees named the expansion after the Harkeys, and the Russellville Library has one of the best Genealogy Collections in the State of Arkansas.



---

The late Laura Shull, a News Reporter, and avid reader, decided to leave her estate to the Library System, and patrons Charles and Helen Laffoon, and Orville and Ellen Hubbard followed in her footsteps.

WE KNOW THAT COMMUNITIES WITH VIBRANT CULTURAL ASSETS ATTRACT  
THE COMPANIES AND WORKERS THAT FUEL THE NEW ECONOMY.

For more than a century, Pope County Library System has provided services to area residents through resources and collections, programming, instruction, and reference services to the areas future teachers, doctors, lawyers, community activists, and leaders.

We are focused on planning and providing library services to the next generation through building new library facilities, expanding programming, and creating a book endowment so the next generation will not have to worry if State Aid to Public Libraries is cut as it was in this year's legislative session.

As philanthropists, the Boyd's, and the late Mr. and Mrs. Donald Harkey, along with several other benefactors **CHANGED OUR HISTORY**. Only today's philanthropist can keep us on course.

Thank you for your support,

The Library Foundation

[www.popelibrary.org/foundation/](http://www.popelibrary.org/foundation/) EIN: 46-4319417

---

116 E. Third ST, Russellville, AR 72801

---

# Strategies for Building Workforce Participation

## Life Skills 101 Classes

We are uniquely positioned to build the employment information and technology skills of area residents through our programs on: resume writing, computers skills, legal and financial planning, homebuyer classes; label reading; caregiver support group; farm-to-table on a budget, G.E.D. and A.C.T. prep and others.

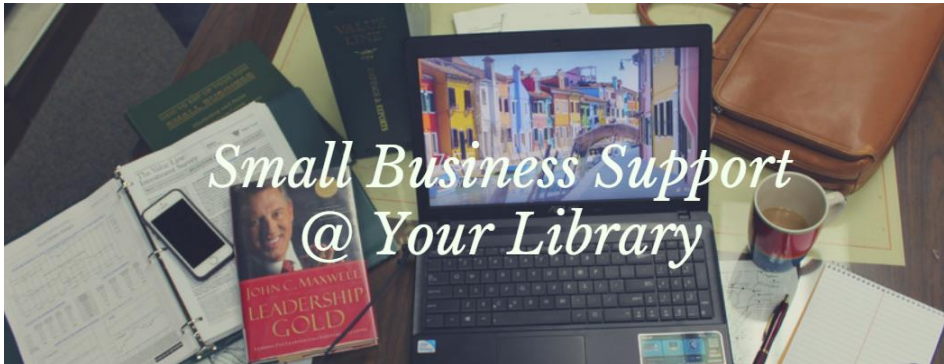


---

# Small Business Support

## Through the Pope County Libraries

*Small Businesses are strong contributors to local economies.*



Our libraries have online resources and Business databases such as: ABI/Inform Collection, Asian & European Business Collection, Entrepreneurship Databases, Hoover's Company Records, Thomas Register, Westlaw, and other databases, Business Plan Books, and are used as a small business center with wi-fi, copiers, faxes, and computers.

## Public Libraries & the Power of Place

### Library Presence Creates Positive Impact on Downtown, Commercial Areas, and Neighborhoods

We offer:

- Gathering Place: Create sense of place
- Education: Public libraries are for everyone at every stage of their life.
- Libraries provide meeting space for community groups.
- Libraries provide neutral ground for opposing groups and for the discussion of difficult and controversial community topics.
- Libraries level the playing field. Equal access to information regardless of intellect or income.

---

# Future Ready with the Library



Dover Branch Librarian Sherry Simpson received a national grant from the American Library Association, Young Adult Library Services Association (YALSA), in partnership with the Association for Rural and Small Libraries and the Dover Public Library was selected as one of 24 libraries nationwide named to the second-year cohort of Future Ready with the Library, a national three-year project to help small, rural, and tribal libraries develop college and career readiness (CCR) services for middle school youth (2017-2018). The project focuses on each library becoming a CCR expert for their community, and on working together with community partners and schools to create services specifically geared to the needs of their own local students and community.



---

# Be Pro, Be Proud

## PCLS Be Pro, Be Proud Partnership with Dover Schools

As part of Future Ready with the Library, the Dover Public Library (DPL) brought the Arkansas State Chamber's **Be Pro Be Proud** Mobile Workforce Workshop to the Dover Schools campus April 2018.



Be Pro Be Proud is an initiative led by the Associated Industries of Arkansas that is spearheading the movement to bring a new generation of pride, progress, and professionals to Arkansas' skilled workforce. As the current skilled workforce is at or near retirement age, Be Pro Be Proud hopes to change how Arkansans think about these job opportunities.

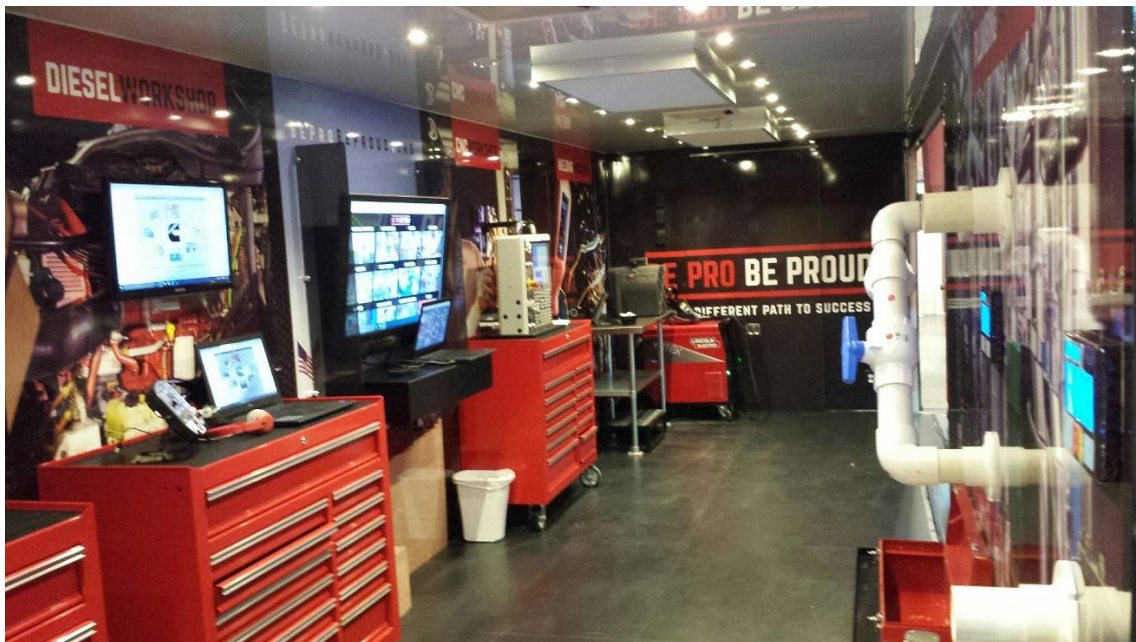
Be Pro Be Proud offers opportunities for job seekers, skilled professionals, employers, and teachers to be involved through training, workshops and more.

*“For decades, there has been a misconception that to make a good living, you've needed a 4-year college degree, and while it can open some doors, this is simply not true.”*

---

When it comes to getting a job, knowledge is power, whether it comes from a traditional college degree or vocational/technical training.

This event was primarily geared toward students who will be looking for high-demand, high-wage jobs that don't require four more years of school after graduation. Through the Be Pro Be Proud workshop, students had the opportunity to explore hands-on some of Arkansas' innovative, in-demand careers, as well as learn about vocational training opportunities that can help them provide them with a path to building a better, more secure future.



Students also met with ATU recruiters about planning to pursue a traditional four-year degree. The DPL provided additional information on ACT prep, college essay writing, Free Application for Federal Student Aid (FAFSA) and scholarship opportunities, as well as advice for students entering the workforce on finding, applying for, getting and keeping a job. State Representative Trevor Drown also attended this event and spoke with students about military careers and opportunities through the GI Bill.



# **Pope County Library System**

*your connection*

116 E. Third ST  
Russellville, AR 72801  
479-968-4368

<http://www.popelibrary.org/>