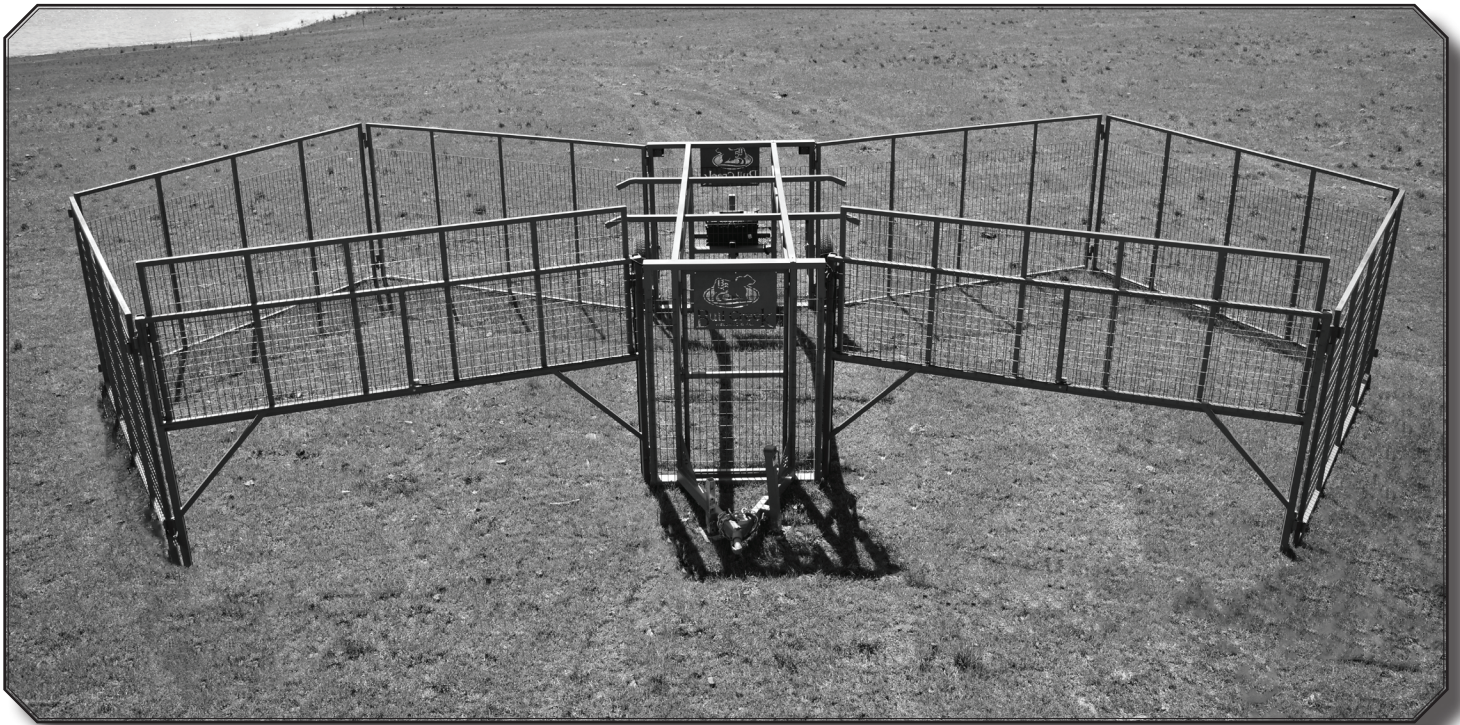


# Game Changer

Portable Wildlife Corral Trap

## Instructional Manual



Engineered for 1 Man to Easily Set-up & Take Down in Minutes



(501) 286-3766  
sales@bullcreekwelding.com  
www.bullcreekblinds.com



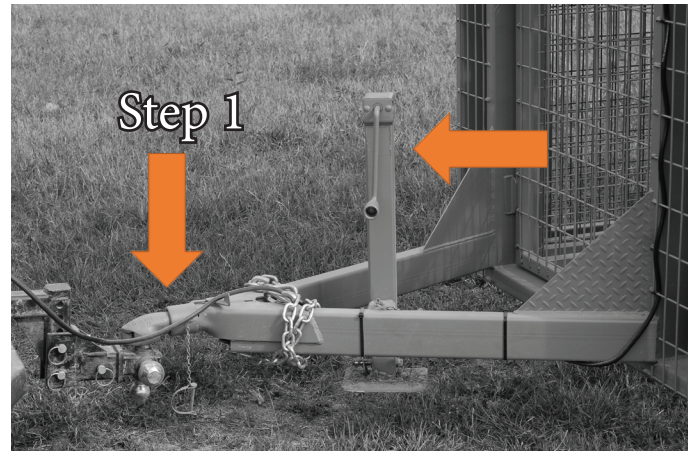
# Setting Up Game Changer Trap

## Set-Up:

Pull trap into position making sure no objects are in the way 15' from either side to allow panels to be folded out.

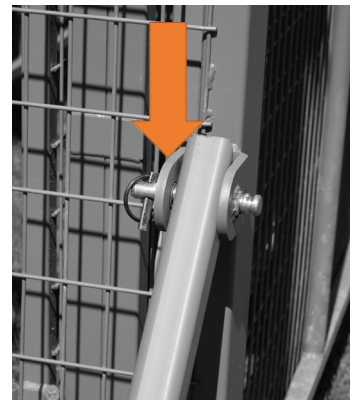
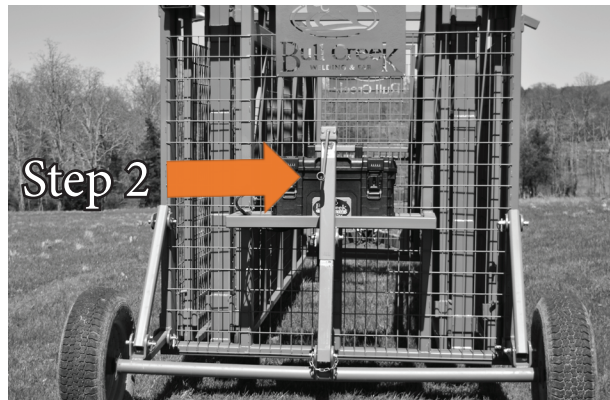
## Step 1:

Unhook trailer from truck and lower front jack until frame is 5" from ground



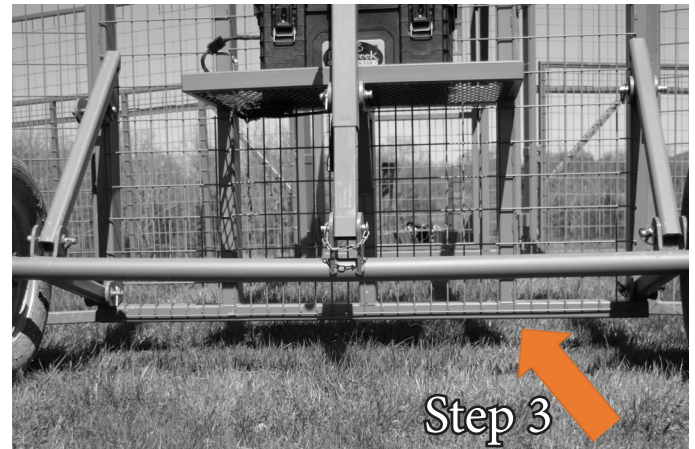
## Step 2:

Extend rear jack up until top pin can be pulled from each axle brace



## Step 3:

Lower rear jack down until frame is 5" from ground



## Step 4:

Unstrap front strap to begin setting the panels



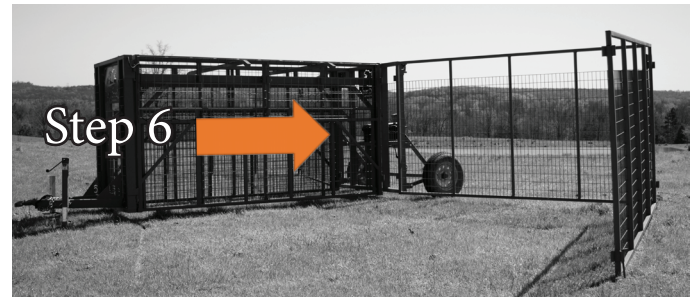
**Step 5:**

To begin setting up panels, pull out panels on one side that hinge from the *Rear*



**Step 6:**

Move to opposite side and repeat the process of pulling out panels that hinge from the *Rear*



**Step 7:**

Rotate out each *Front* panel



**Step 8:**

Once all panels are close to final position lower front and rear jacks to ground



**Step 9:**

Pin Front and Rear Panels together



For additional instructions on how to set-up a Game Changer trap:

<https://youtu.be/ali3jFjPkJQ>



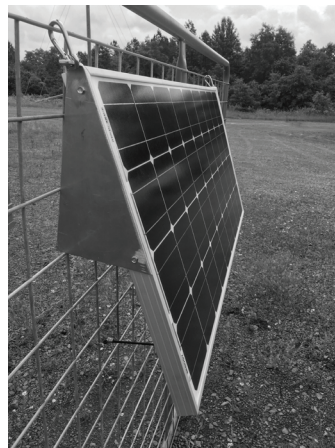
### **Latch:**

**Push latch up to test electronics, do not pick up gate at this time**



### **Solar Panel:**

**Quick clip solar panel on panel closest to trailer and connect solar charger cord.**



### **Camera Pole:**

**Mount camera on pole, connect yellow wire, and antenna. At this time, camera should be functioning. If possible, pull up app on phone and make sure the camera is in a good position to see the entire trap. It may take a few minutes for the camera to acquire signal and log on.**

### **Test:**

**If possible, engage latch using the app to make sure gates have good connections. If there is no cell signal for your phone, you can also trip the latch by touching the white wire in the battery box to positive side of battery terminal.**

### **Gates:**

**Once testing is complete, lift gates into position using a handheld winch and latch gates into place.**



### **Walk Gate:**

**Use walk gate to access inside of trap. *Never walk under raised gates.* Use the walk gate to place bait in the center of the trap away from gates.**



**Reverse the order of set-up to take down the trap.**