

EAGAN

BI-FOLD DOOR RETRO KIT INSTRUCTION MANUAL

Tools Needed



Hammer



3/8" Open End Wrench



5/32" Allen Wrench



6" Socket Extension

Socket Sizes Needed



1/4"

3/8"

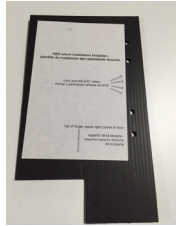
7/16"

1/2"

9/16"

INDEX OF PARTS

MOST PARTS ARE LABELED



TEMPLATE



**DRUM KEYS, SHAFT
COLLARS, SPRING
BOLTS & NUTS**



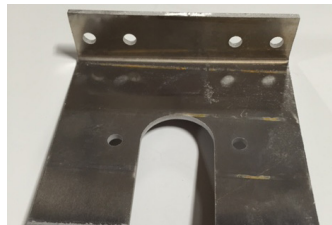
**3" x 0.375"
LAG SCREWS
w/washers and 9/32 drill bit**



**TOP COVER
SELF-DRILLING
SCREWS**



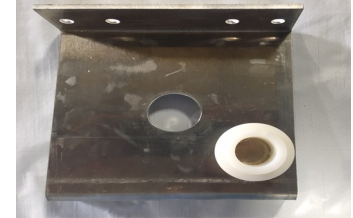
**DOOR
KICKERS w/
bolts & nuts**



**CENTER ROD
SUPPORT
BRACKET**



**LEFT CABLE DRUM
AND CABLE (RED)
RIGHT CABLE
DRUM AND CABLE
(BLACK)**



**END ROD
SUPPORT
BRACKET &
BUSHING**



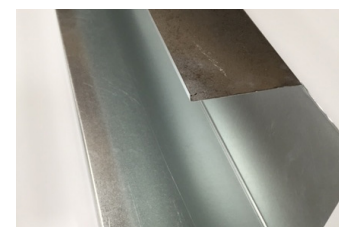
CHAIN DRIVE



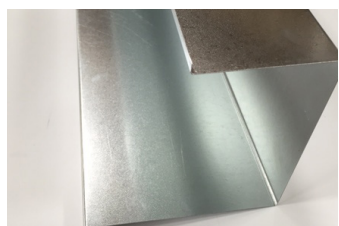
CHAIN KEEPER



**SHAFT AND
SPRINGS
RED - LEFT
BLACK - RIGHT**



**DRIVE SIDE TOP
COVER**



**OFF SIDE TOP
COVER**



1.



2.

STEP 1 - Mount center shaft support.

- Sit winch mounting template on top of hinge boss. (1.)
- Use winch mounting template to line up the correct place to mark the pre-drill holes on right side. Use the 9/32" drill bit to drill holes.
- Move to center, flip the template upside down (see template instructions) and mark and drill the holes. (2.)
- Move to left side, mark and drill the holes.
- Mount the center shaft support with the 3/8" leg bolts.



3.

STEP 2 - Shaft and springs installation.

- Loosen set screws and springs.
- Spread the springs apart just about two inches. It will take two men holding the shaft and springs to align it in the center mounting bracket. Make sure the black spring is on right side, red spring is on left side.
- Slide the bushing into the center bracket. (4.)
- Line up the springs and reattach and tighten the bolts. (4.)
- Shaft is now supported by the center bracket.



4.



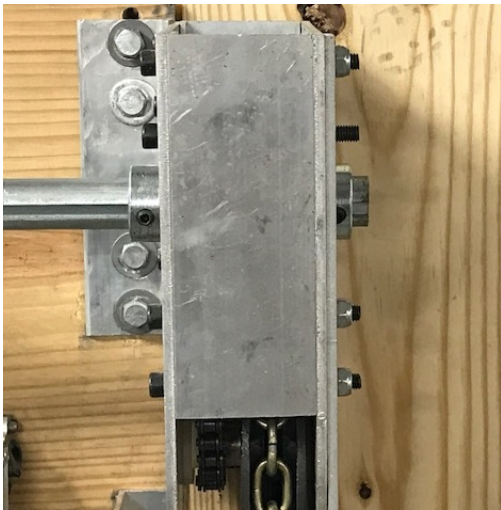
STEP 3 - Mount left side mounting bracket.

5.
 - Slide on the left (red) drum with set screws on side facing center of the door. (5.)
 - Install bushing into the end support bracket
 - Install the end support bracket.
 - Once mounted, pull shaft through bearing to leave 3/8" of shaft on the outside. Leave the drum loose. Do not tighten the set screws.



STEP 4 - Right side drive chain installation.

6.
 - Add right (black) side drum with set screws facing to center of the door and then add the collar. Leave the collar loose, do not tighten the set screws. (6.)
 - Install the chain drive onto the shaft with mounting bracket of chain drive facing edge of door. (6.)
 - Align bolt hole with the drive and bolt in the 3/8" x 3" lag bolts.
 - Push first collar flush on inboard side of the chain drive. (7.)
 - Take the second collar and put it on the outboard side of the chain drive. (7.)
 - Tighten collar set screws. (7.)



7.



8.

STEP 5 - Stretch springs.

- On right side, measure 3" from end of spring and make a mark with marker on the shaft. (8.)
- Pull spring over to mark and tighten the set screws. On left side, measure 3" from end of spring and make a mark with marker on the shaft.
- Pull spring over to mark and tighten the set screws.
- Unwind the cable from the drum.
- Pull the axle out of the bottom of the door.
- Put the axle through the cable bushing. (9.)
- Reinstall the axle and roller back in the bottom door extrusion.



9.

STEP 6 - Wind and load the springs.



10.

- With the drums loose and using keyway slot as a reference, turn the chain drive backwards nine revolutions to wind the springs and lock the chain in the chain keeper (for a 12 x 10 door). For larger doors, the spring may be wound up to a maximum of 12 revolutions.
- Measure 1 ¼" from chain drive to inside of black drum. (10.)
- Align and insert the key stock in drum.
- Tighten both set screws on the drum.
- Slide drum against bushing on the left side.
- Align the key in the drum and the shaft and insert the key stock.
- Tighten both set screws on the drum.
- Remove chain from keeper putting tension on cables.



11.

STEP 7 - Install door kicker.

- Install the door kicker to the top half of center hinge using the existing screw hole. Using the kicker as a drill guide, drill a 5/16" hole and install the second bolt and nut provided with the kit. (11.)
- Install the base of the kicker to the bottom half of the center hinge using the existing screw hole. Using the kicker as a drill guide, drill 5/16" hole and install the second bolt and nut provided with the kit.



STEP 8 - Install top cover.

- 12.
- Install notched half (side with decal) of top cover on the chain drive side by installing two self-drilling screws through face of chain drive—locate screws approximately 1 ¼” from top and bottom of chain drive.
 - Install un-notched portion of the top cover on the off-side by installing two self-drilling screws through the offside end bracket—locate screws approximately 1 ¼” from the top and bottom of end bracket.
 - Install two self-drilling screws through the overlapped covers in center support bracket—locate screws approximately 1 ¼” from the top and bottom of the center support bracket.
 - Release the chain.