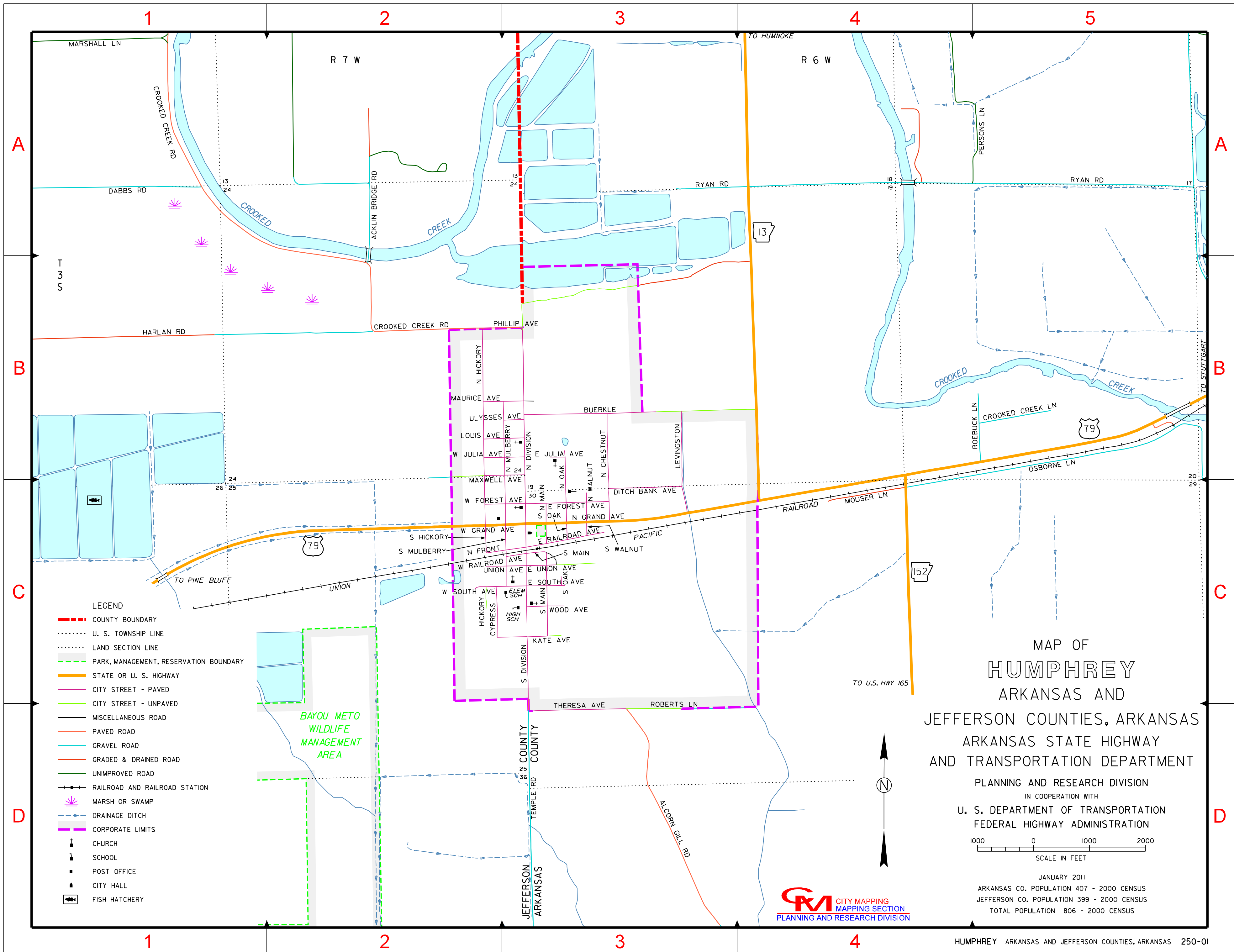


INDEX

BUERKLE	B-3
CYPRESS	B-3
DITCH BANK AVE	C-3
E FOREST AVE	C-3
E JULIA AVE	B-3
E RAILROAD AVE	C-3
E SOUTH AVE	C-3
E UNION AVE	C-3
HICKORY	C-3
KATE AVE	B-3
LEVINGSTON	B-3
LOUIS AVE	B-2
MAURICE AVE	B-2
MAXWELL AVE	B-2
N CHESTNUT	B-3
N DIVISION	B-3
N FRONT	C-3
N GRAND AVE	C-3
N HICKORY	B-3
N MAIN	C-3
N MULBERRY	B-3
N OAK	B-3
N WALNUT	C-3
PHILLIP AVE	B-3
ROBERTS LN	D-3
S DIVISION	C-3
S HICKORY	C-3
S MAIN	C-3
S MULBERRY	C-3
S OAK	C-3
S WALNUT	C-3
THERESA AVE	B-3
ULYSSES AVE	C-3
UNION AVE	C-3
W FOREST AVE	C-2
W GRAND AVE	C-2
W JULIA AVE	B-2
W RAILROAD AVE	C-2
W SOUTH AVE	C-2
WOOD AVE	C-3

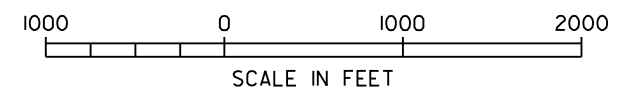


- LEGEND**
- COUNTY BOUNDARY
 - U. S. TOWNSHIP LINE
 - LAND SECTION LINE
 - PARK, MANAGEMENT, RESERVATION BOUNDARY
 - STATE OR U. S. HIGHWAY
 - CITY STREET - PAVED
 - CITY STREET - UNPAVED
 - MISCELLANEOUS ROAD
 - PAVED ROAD
 - GRAVEL ROAD
 - GRADED & DRAINED ROAD
 - UNIMPROVED ROAD
 - RAILROAD AND RAILROAD STATION
 - MARSH OR SWAMP
 - DRAINAGE DITCH
 - CORPORATE LIMITS
 - + CHURCH
 - + SCHOOL
 - + POST OFFICE
 - + CITY HALL
 - + FISH HATCHERY

MAP OF HUMPHREY ARKANSAS AND JEFFERSON COUNTIES, ARKANSAS

ARKANSAS STATE HIGHWAY AND TRANSPORTATION DEPARTMENT

PLANNING AND RESEARCH DIVISION
 IN COOPERATION WITH
 U. S. DEPARTMENT OF TRANSPORTATION
 FEDERAL HIGHWAY ADMINISTRATION



JANUARY 2011
 ARKANSAS CO. POPULATION 407 - 2000 CENSUS
 JEFFERSON CO. POPULATION 399 - 2000 CENSUS
 TOTAL POPULATION 806 - 2000 CENSUS

