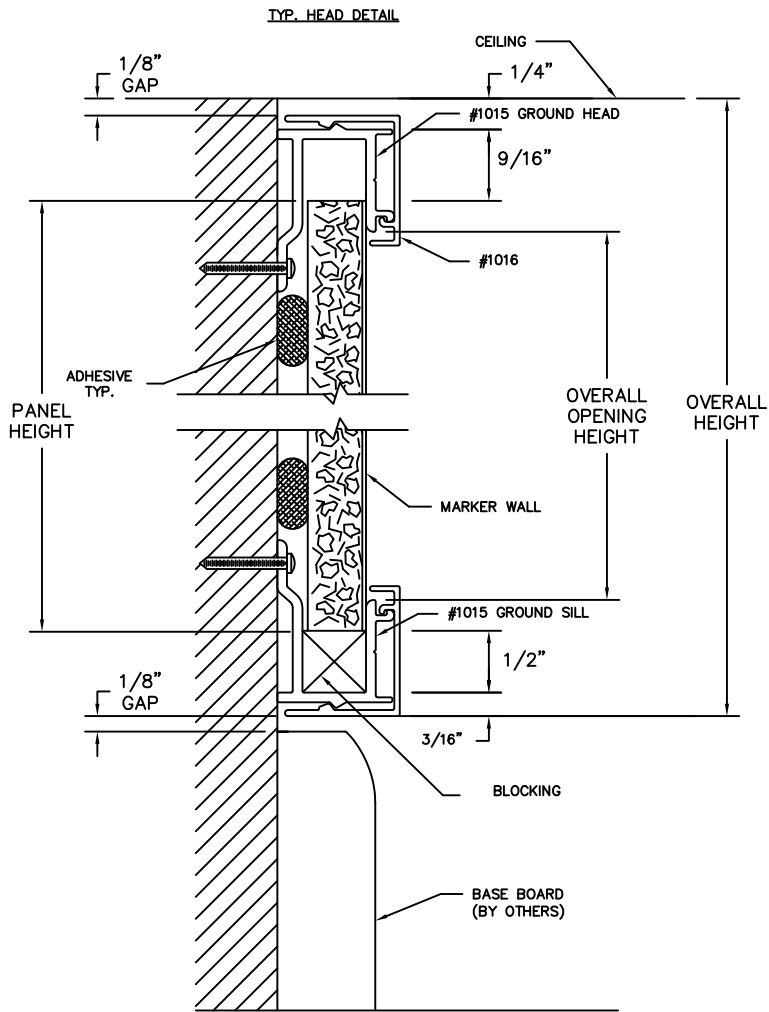
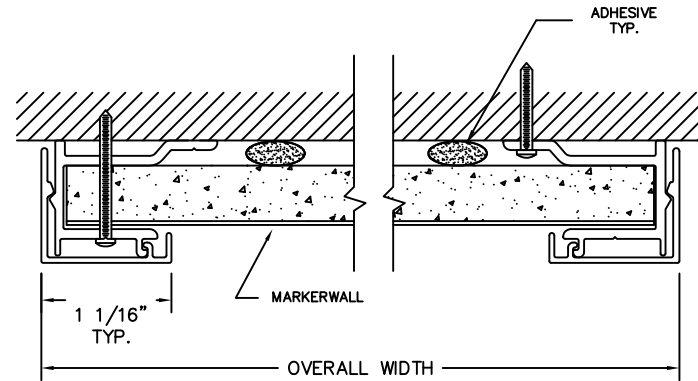


**CLARIDGE
MARKER WALL UNITS
TRIM SECTION DETAILS**



TYP. SILL DETAIL



NOTE:
END JAMB TRIM WITH BACK LEG REMOVED
CAN BE INSTALLED DIRECTLY OVER END OF
PANEL WITHOUT REQUIRING ANY SIDEWAYS
MOVEMENT, THUS ALLOWING WALL TO WALL
INSTALLATION.

NOTE:
AFTER FIRST PANEL IS
SEATED IN HEAD AND SILL
TRIM IT MUST BE MOVED
SIDEWAYS TO SLIDE INSIDE
JAMB TRIM.

TRIM PATTERN
JAMBS ARE FULL HEIGHT
HEAD AND SILL TO BE CUT TO
FIT BETWEEN JAMBS.

