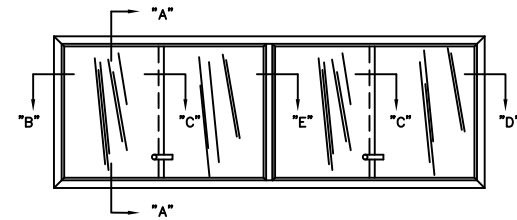
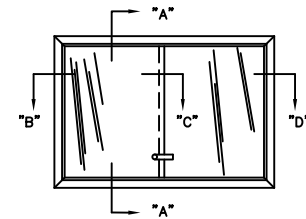
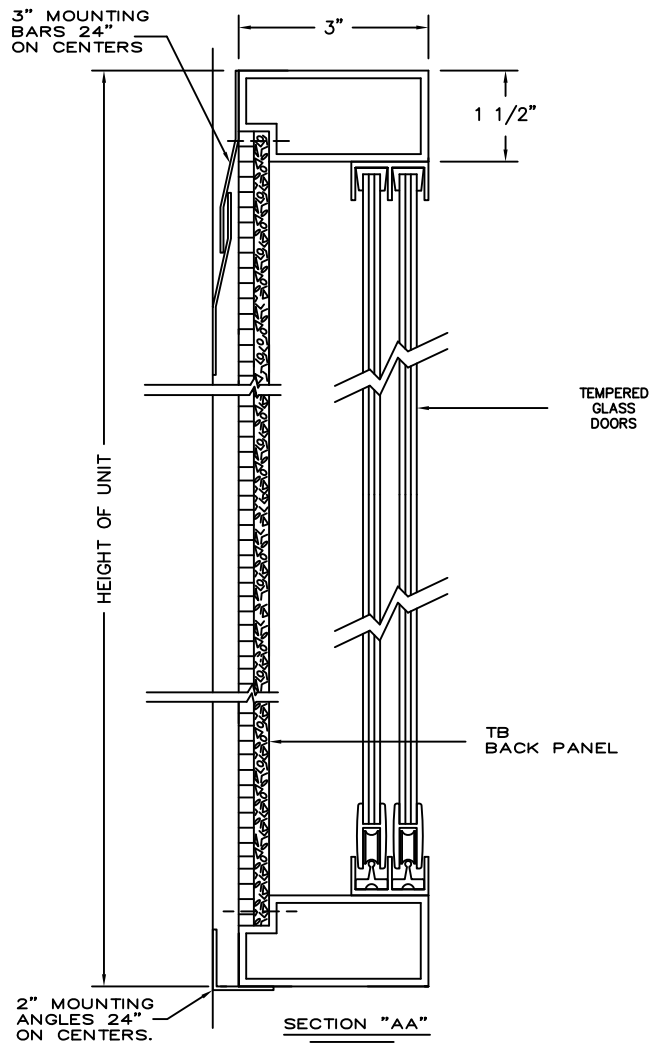


**CLARIDGE CONTEMPORARY
BULLETIN BOARD CABINETS
WITH SLIDING DOORS**



NO.	O.A. SIZE H-W	PAIR OF DOORS
2035S	3'X2'	1
2036S	3'X2'6"	1
2037S	3'X3'	1
2038S	3'6"X2'6"	1
2039S	3'6"X3'	1
2040S	4'X4'	1
2041S	3'X4'	1
2042S	3'6"X5'	1
2043S	4'X5'	1
2044S	4'X6'	1
2045S	4'X7'	2
2046S	4'X8'	2
2048S	4'X10'	2
2050S	4'X12'	2

