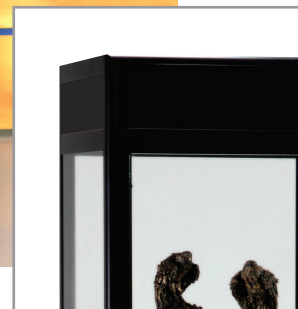




# acclaim display cases

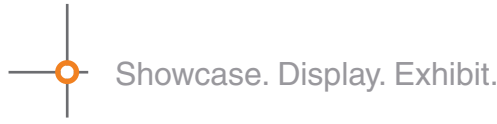
—○— Showcase. Display. Exhibit.



C O N N E C T <sup>TM</sup>   
by *Claridge.*

let your *ideas* flow <sup>TM</sup>

# acclaim display cases

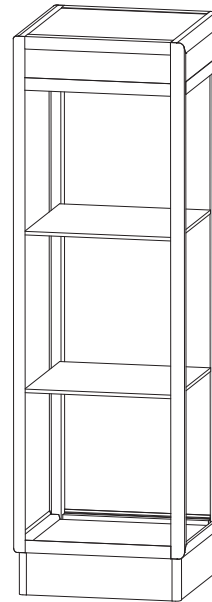
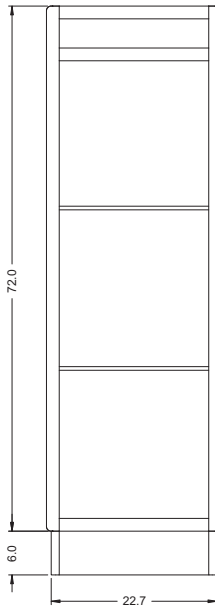
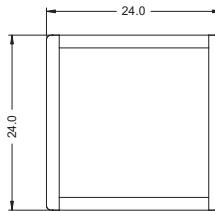


## Display

### Features:

**Acclaim** offers an unobstructed view plus a contemporary radius face design.

- Lighted case has tempered glass doors with lock
- Base and top available in any standard Wilsonart laminate
- Aluminum frame in any Powder Coat finish
- Other sizes available



## acclaim display cases



Product Number	Nominal Dimensions	Estimated Weight	Acclaim Display Case has plinth base and contemporary radius face design. Tempered hinged glass door with lock and three adjustable glass shelves. Case has Powder Coat finish available in 24 standard colors (additional powder coat colors optional). Header and 6" high base available in any standard Wilsonart laminate. Furnished with light. Acclaim Case is designed to match or complement any room decor.
AM-0202	78" x 24" x 24"	225 lbs.	